

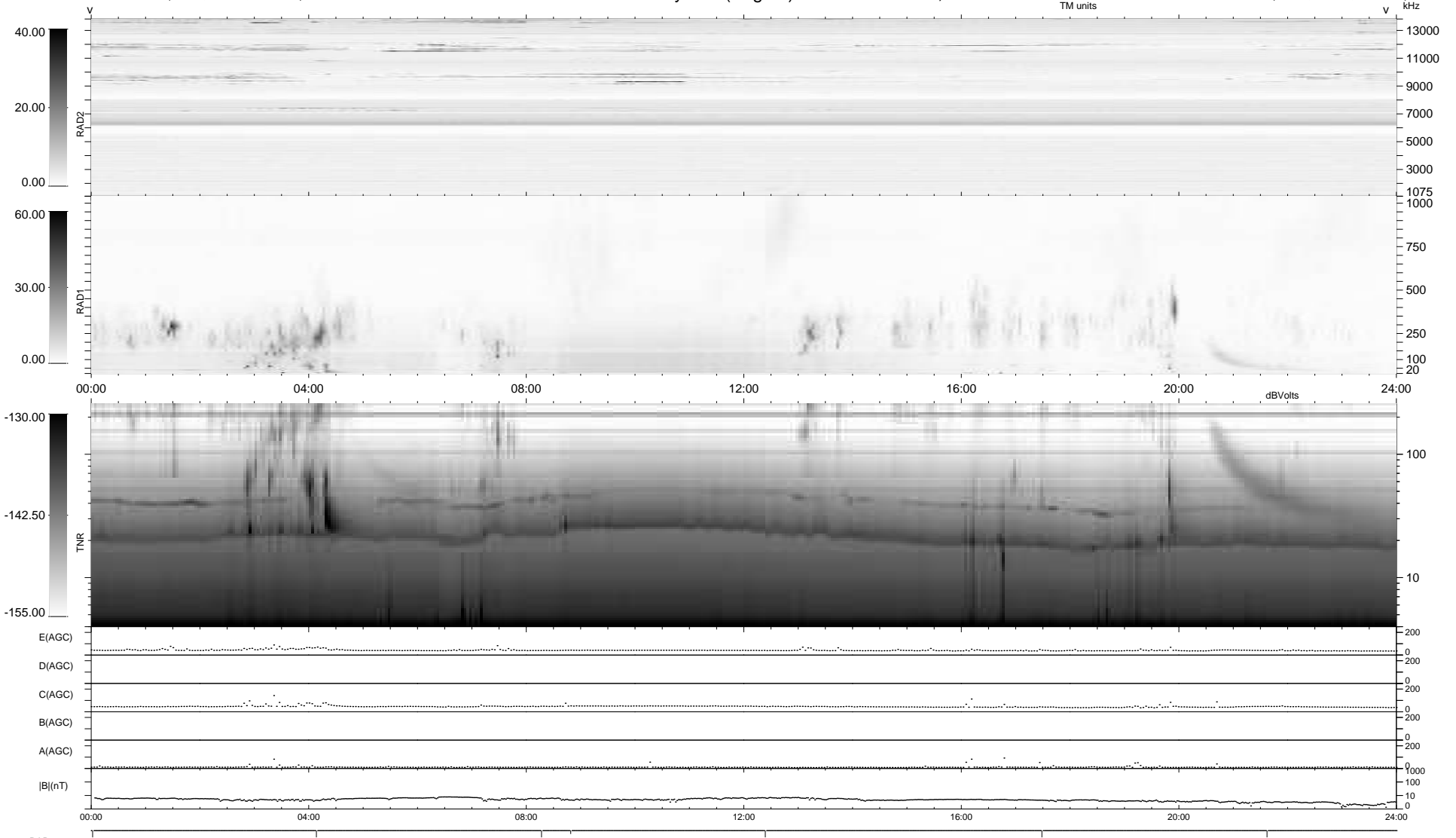
7 bad + 933 good MF/940MF projected (99%) - 0 missing MFs  
 Avg interval = 180 secs  
 Re = 242.12 (219.85, -101.23, 6.38 GSE)

windlib 2.0b

LZ version = v01

### WIND/WAVES Summary Plot (Page 1) for 31-MAR-2020, DOY = 91

DAILY 2020-04-02 21:20:04  
 Re = 240.95 (218.64, -101.07, 6.26 GSE)



```

RAD2
Antenna Ey .....
Mode LIN(1) .....
SUM/SEP SEP .....
Toggle OFF .....

RAD1
Antenna Ex .....
Mode LIS(2,4) .....
SUM/SEP SUM .....
Toggle OFF .....

TNR
Antenna ExEy .....
Mode A-32 .....
Sweep ACE .....
  
```