

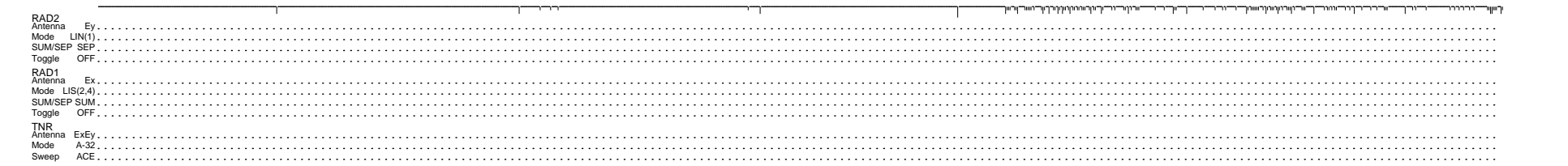
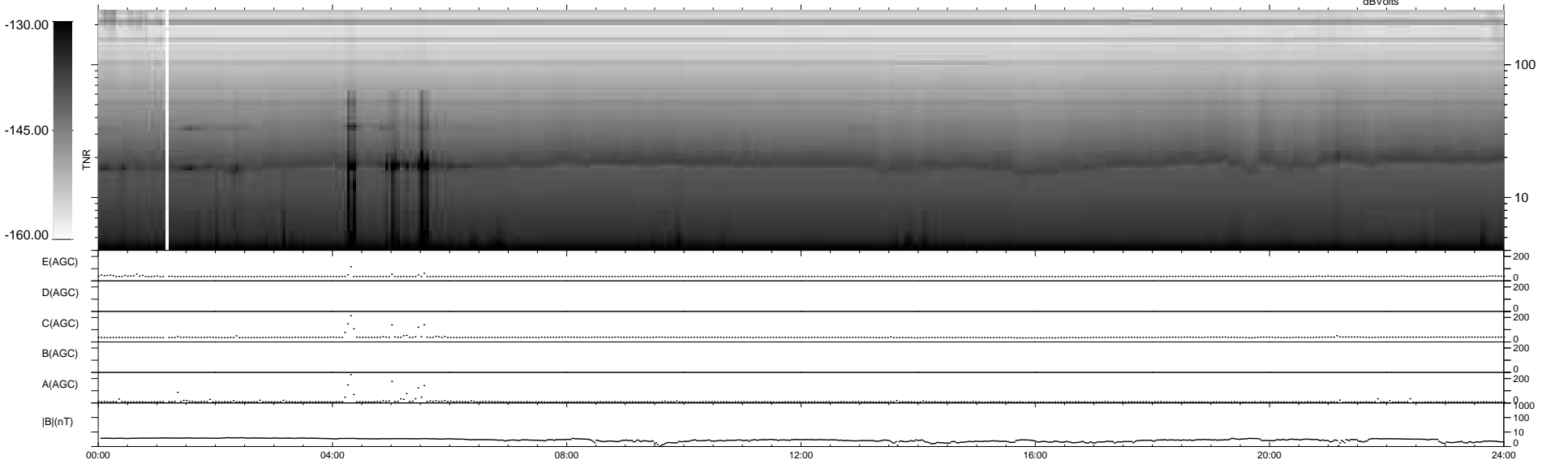
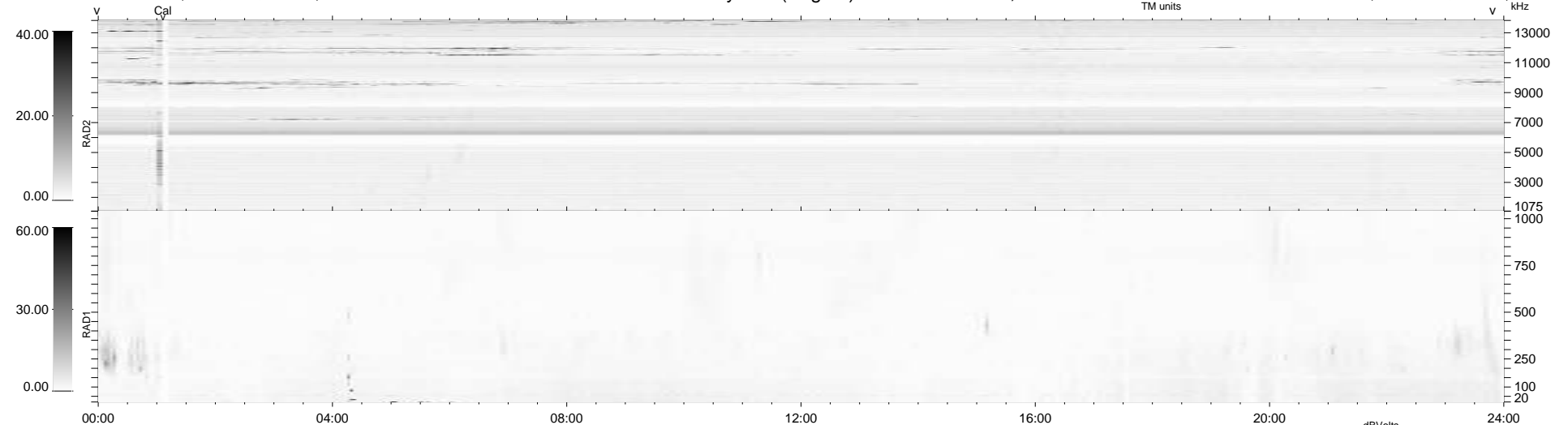
128 bad + 811 good MF/939MF projected (86%) - 0 missing MFs  
Avg interval = 180 secs  
Re = 254.52 (239.19, -86.69, 7.47 GSE)

windlib 2.0b

LZ version = v01

### WIND/WAVES Summary Plot (Page 1) for 14-MAR-2020, DOY = 74

DAILY 2020-03-16 11:20:42  
Re = 254.23 (238.17, -88.59, 7.46 GSE)



RAD2  
Antenna Ey  
Mode LIN(1)  
SUM/SEP SEP  
Toggle OFF

RAD1  
Antenna Ex  
Mode LIS(2,4)  
SUM/SEP SUM  
Toggle OFF

TNR  
Antenna ExEy  
Mode A-32  
Sweep ACE