

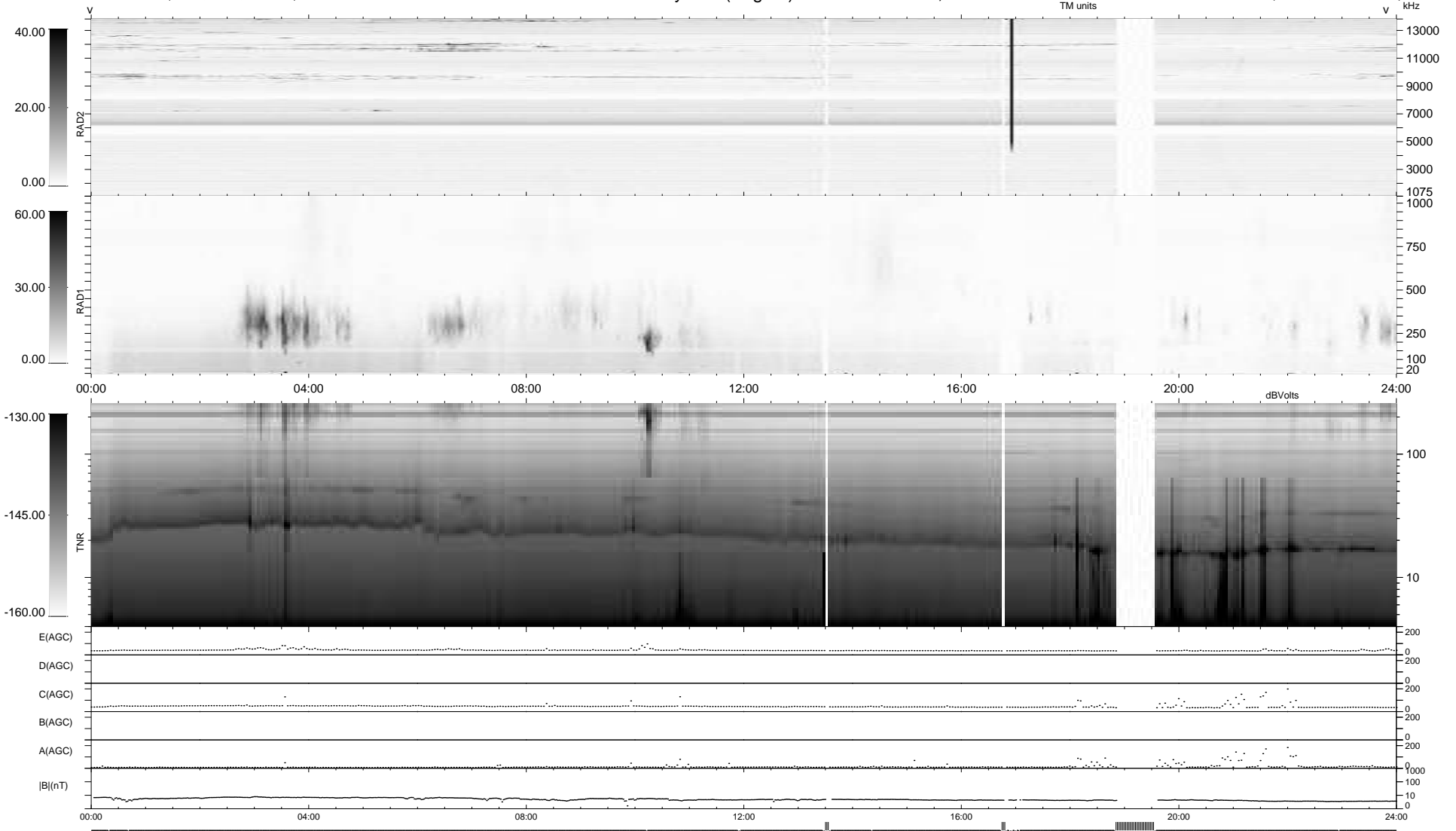
20 bad + 885 good MF/939MF projected (94%) - 34 missing MFs
 Avg interval = 180 secs
 Re = -254.79 (240.21, -84.64, 7.48 GSE)

windlib 2.0b

LZ version = v01

WIND/WAVES Summary Plot (Page 1) for 13-MAR-2020, DOY = 73

DAILY 2020-03-16 11:20:05
 Re = 254.52 (239.19, -86.68, 7.47 GSE)



```

RAD2
Antenna Ey .....
Mode LIN(1) .....
SUM/SEP SEP .....
Toggle OFF .....

RAD1
Antenna Ex .....
Mode LIS(2,4) .....
SUM/SEP SUM .....
Toggle OFF .....

TNR
Antenna ExEy .....
Mode A-32 .....
Sweep ACE .....
  
```