

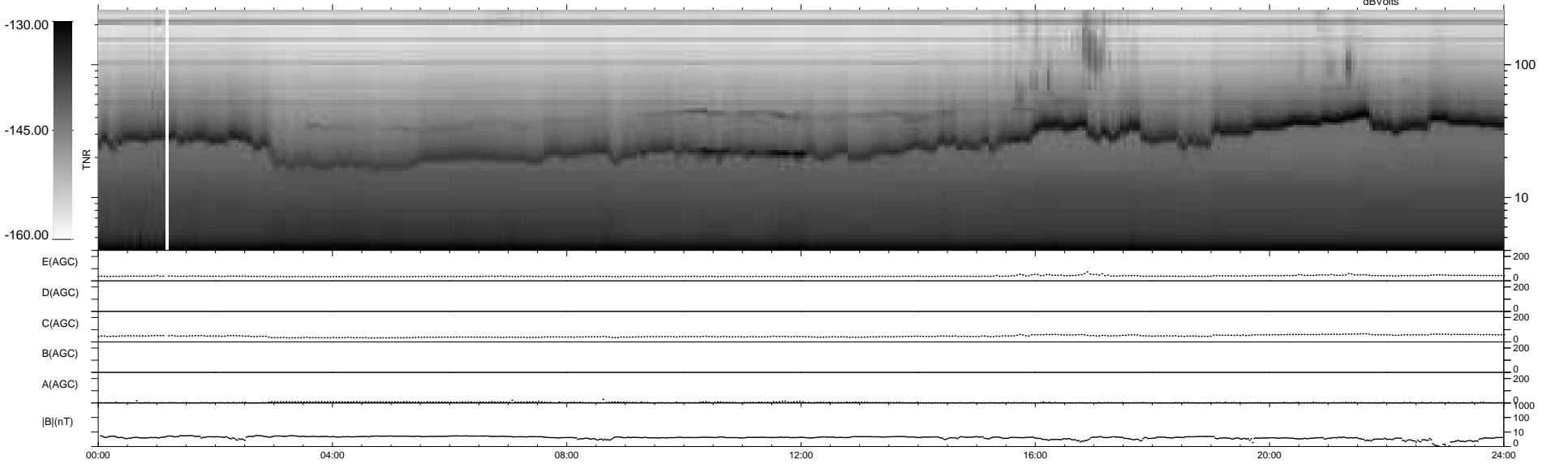
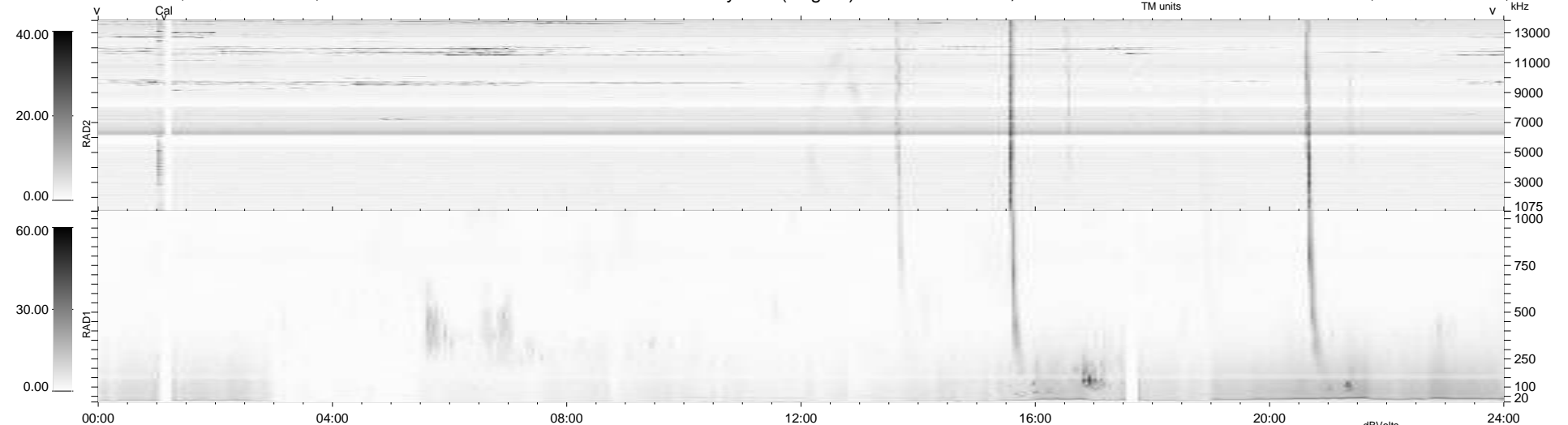
9 bad + 931 good MF/940MF projected (99%) - 0 missing MFs
 Avg interval = 180 secs
 Re = 256.13 (245.50, -72.66, 7.33 GSE)

windlib 2.0b

LZ version = v01

WIND/WAVES Summary Plot (Page 1) for 08-MAR-2020, DOY = 68

DAILY 2020-03-16 09:23:16
 Re = 255.85 (244.42, -75.23, 7.38 GSE)



```

RAD2
Antenna Ey .....
Mode LIN(1) .....
SUM/SEP SEP .....
Toggle OFF .....

RAD1
Antenna Ex .....
Mode LIS(2,4) .....
SUM/SEP SUM .....
Toggle OFF .....

TNR
Antenna ExEy .....
Mode A-32 .....
Sweep ACE .....
  
```