

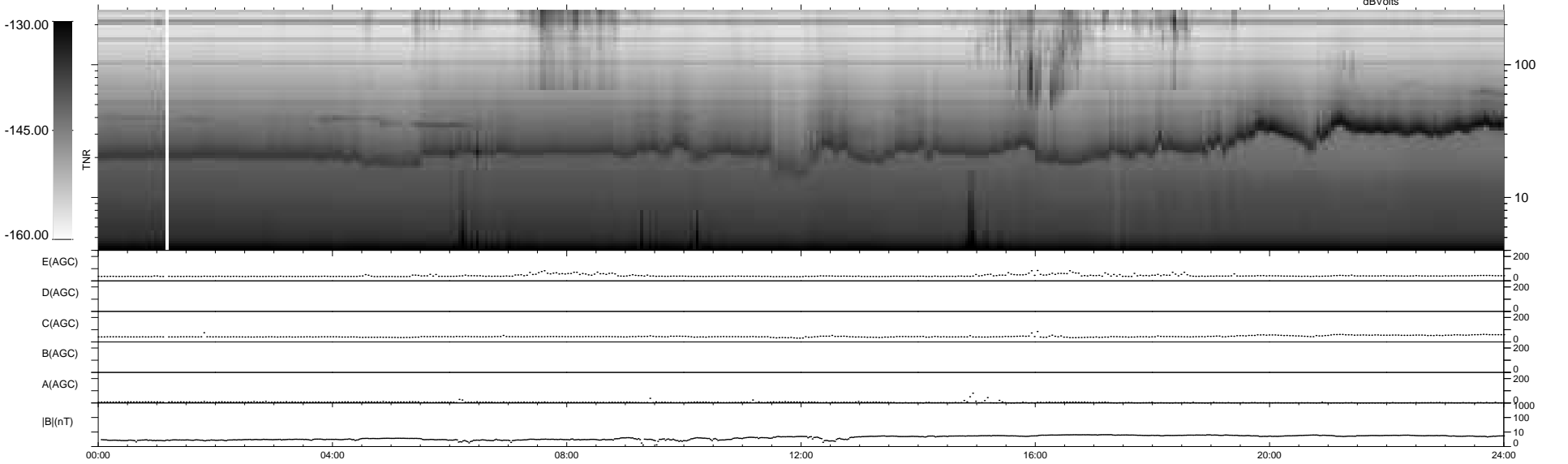
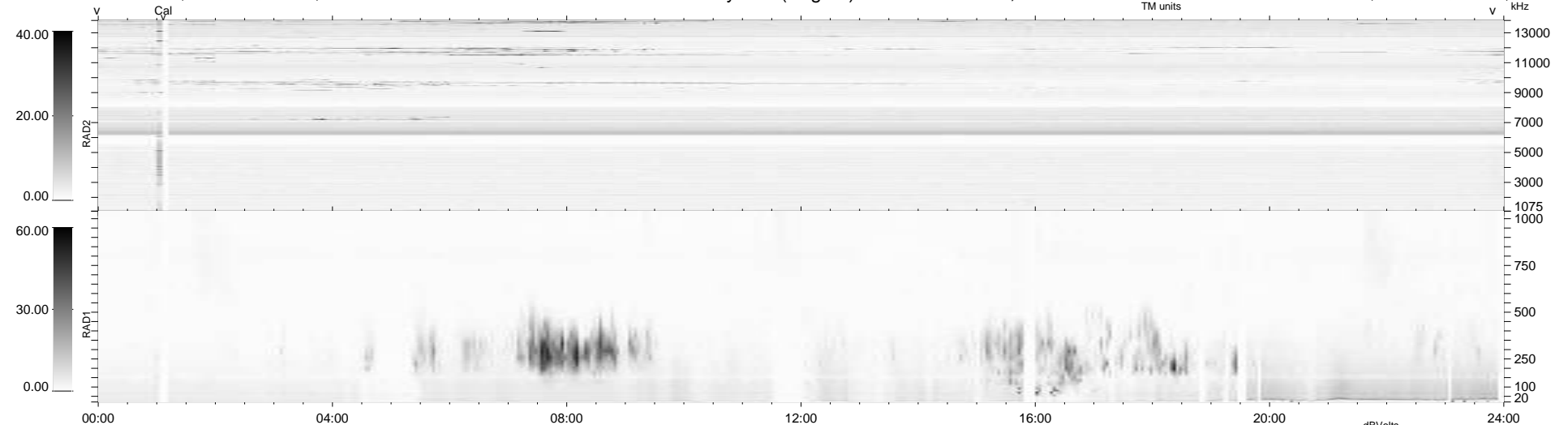
177 bad + 762 good MF/939MF projected (81%) - 0 missing MFs  
 Avg interval = 180 secs  
 Re = 257.40 (249.80, -61.67, 7.03 GSE)

windlib 2.0b

LZ version = v01

### WIND/WAVES Summary Plot (Page 1) for 04-MAR-2020, DOY = 64

DAILY 2020-03-16 09:20:51  
 Re = 257.07 (248.76, -64.48, 7.11 GSE)



RAD2  
 Antenna Ey .....  
 Mode LIN(1) .....  
 SUM/SEP SEP .....  
 Toggle OFF .....  
 RAD1  
 Antenna Ex .....  
 Mode LIS(2,4) .....  
 SUM/SEP SUM .....  
 Toggle OFF .....  
 TNR  
 Antenna ExEy .....  
 Mode A-32 .....  
 Sweep ACE .....