

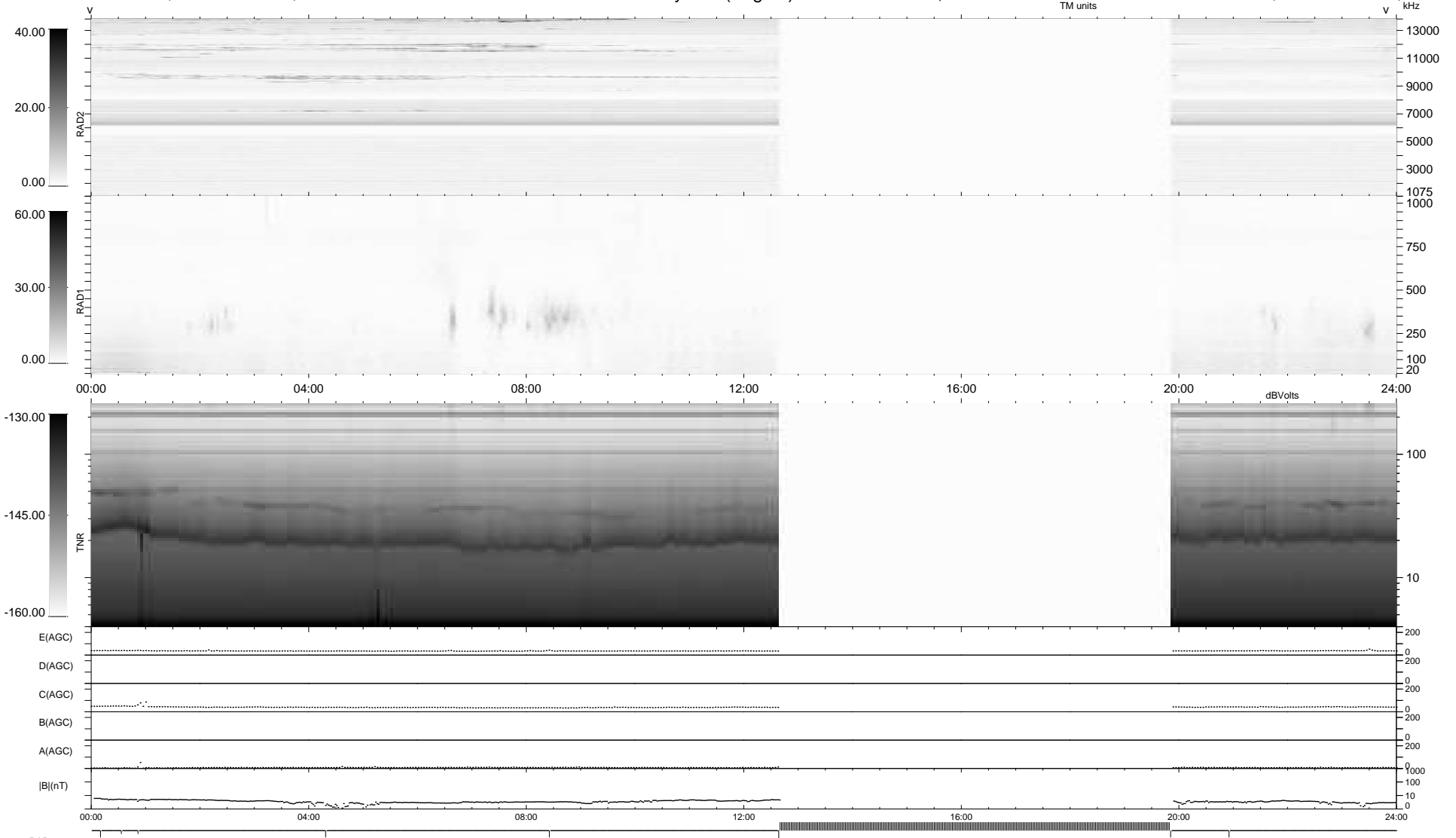
8 bad + 650 good MF/939MF projected (69%) - 281 missing MFs  
 Avg interval = 180 secs  
 Re = -257.72 (250.83, -58.80, 6.93 GSE)

windlib 2.0b

LZ version = v01

### WIND/WAVES Summary Plot (Page 1) for 03-MAR-2020, DOY = 63

DAILY 2020-03-05 11:20:04  
 Re = 257.40 (249.81, -61.65, 7.03 GSE)



```

RAD2
Antenna  Ey .....
Mode     LIN(1) .....
SUM/SEP  SEP .....
Toggle   OFF .....

RAD1
Antenna  Ex .....
Mode     LIS(2,4) .....
SUM/SEP  SUM .....
Toggle   OFF .....

TNR
Antenna  ExEy .....
Mode     A-32 .....
Sweep    ACE .....
  
```