

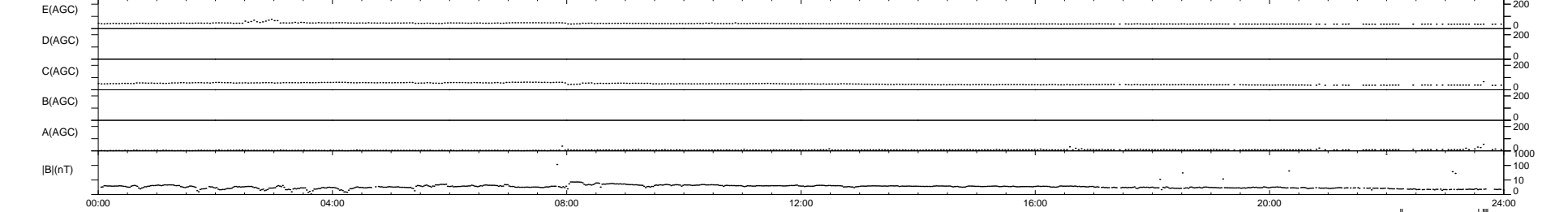
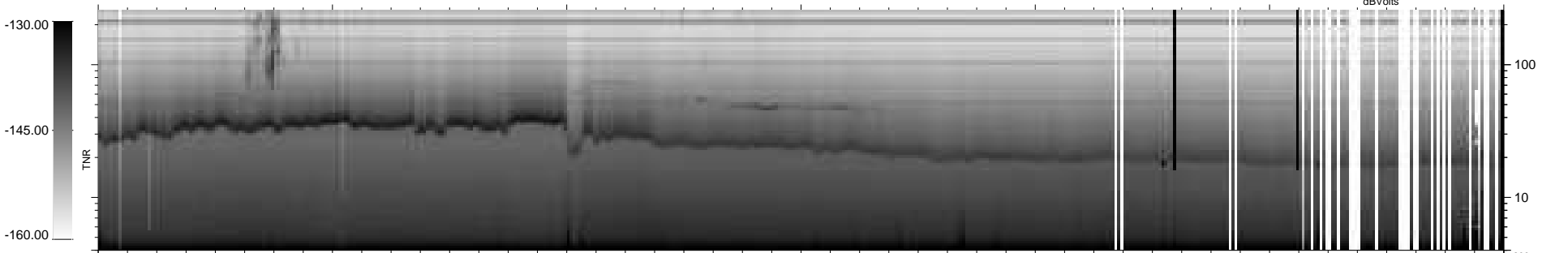
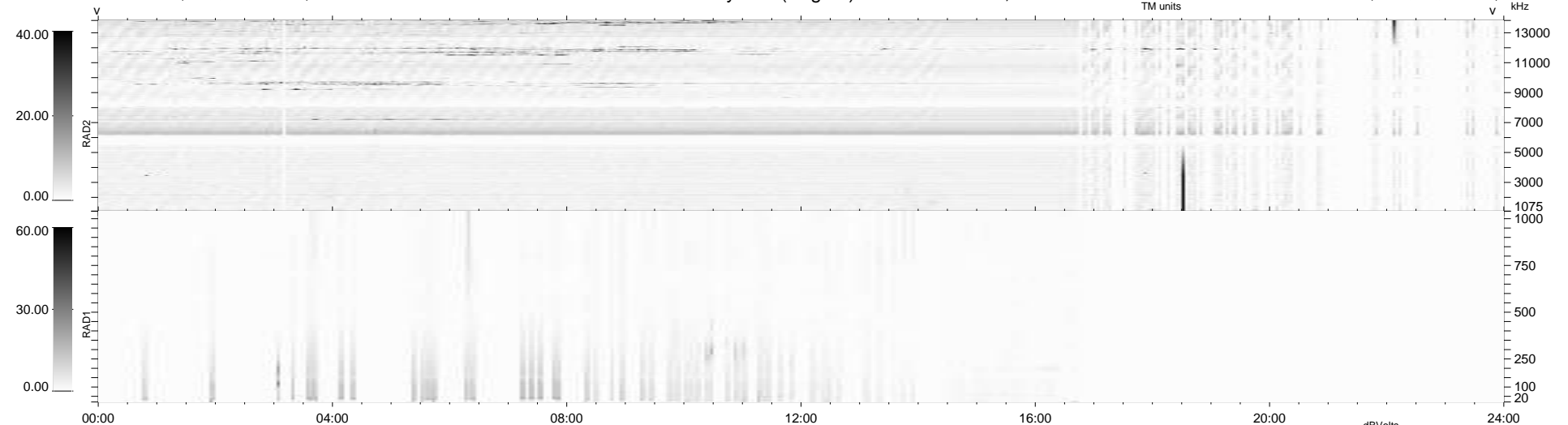
567 bad + 365 good MF/939MF projected (38%) - 7 missing MFs  
Avg interval = 180 secs  
Re = 258.00 (257.87, 7.13, 4.13 GSE)

windlib 2.0b

LZ version = v01

### WIND/WAVES Summary Plot (Page 1) for 12-FEB-2020, DOY = 43

DAILY 2020-02-13 15:20:04  
Re = 258.18 (258.12, 3.48, 4.32 GSE)



RAD2  
Antenna Ey  
Mode LIN(1)  
SUM/SEP SEP  
Toggle OFF  
RAD1  
Antenna  
Mode  
SUM/SEP  
Toggle  
TNR  
Antenna ExEy  
Mode A-32  
Sweep ACE