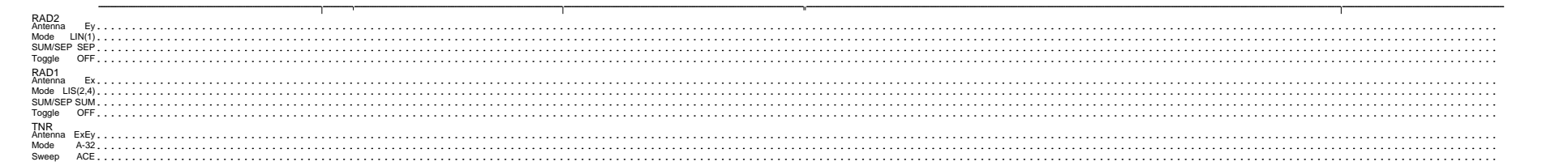
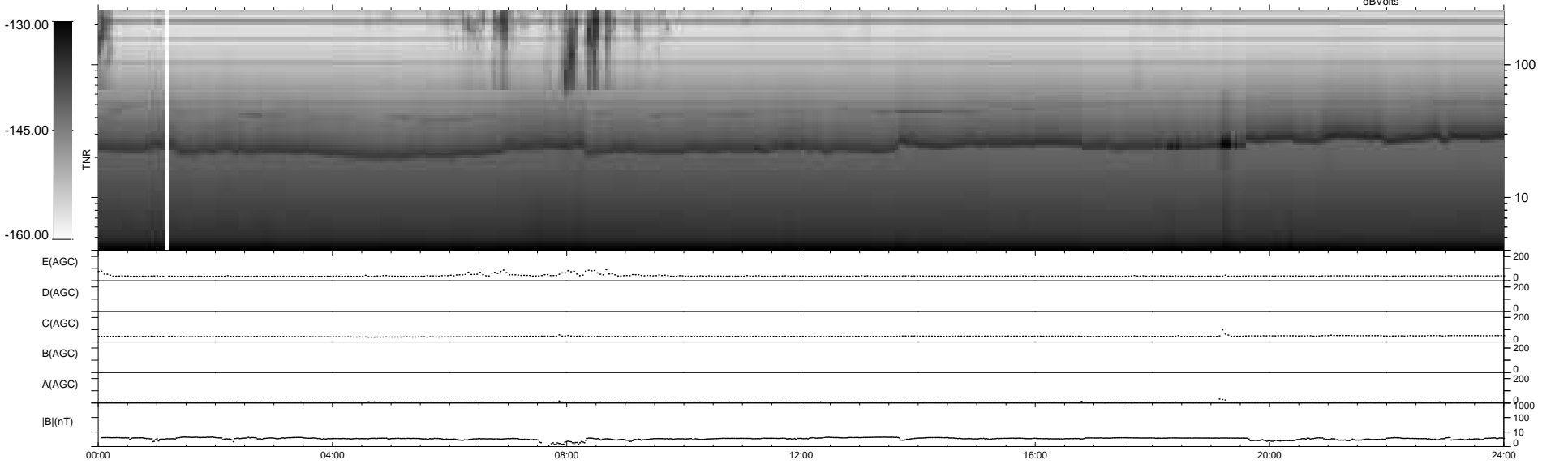
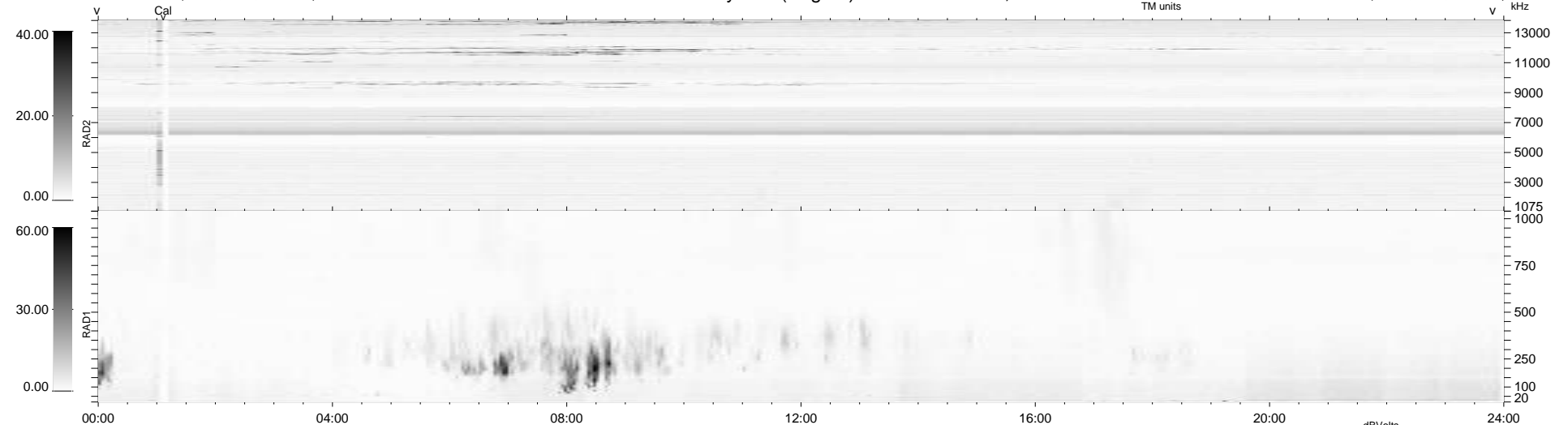


6 bad + 933 good MF/939MF projected (99%) - 0 missing MFs
 Avg interval = 180 secs
 Re = 257.58 (254.55, 39.33, 2.12 GSE)

windlib 2.0b LZ version = v01
 DAILY 2020-02-04 13:20:05
 Re = 257.57 (255.03, 35.99, 2.35 GSE)

WIND/WAVES Summary Plot (Page 1) for 03-FEB-2020, DOY = 34



```

RAD2
Antenna Ey .....
Mode LIN(1) .....
SUM/SEP SEP .....
Toggle OFF .....

RAD1
Antenna Ex .....
Mode LIS(2,4) .....
SUM/SEP SUM .....
Toggle OFF .....

TNR
Antenna ExEy .....
Mode A-32 .....
Sweep ACE .....
  
```