

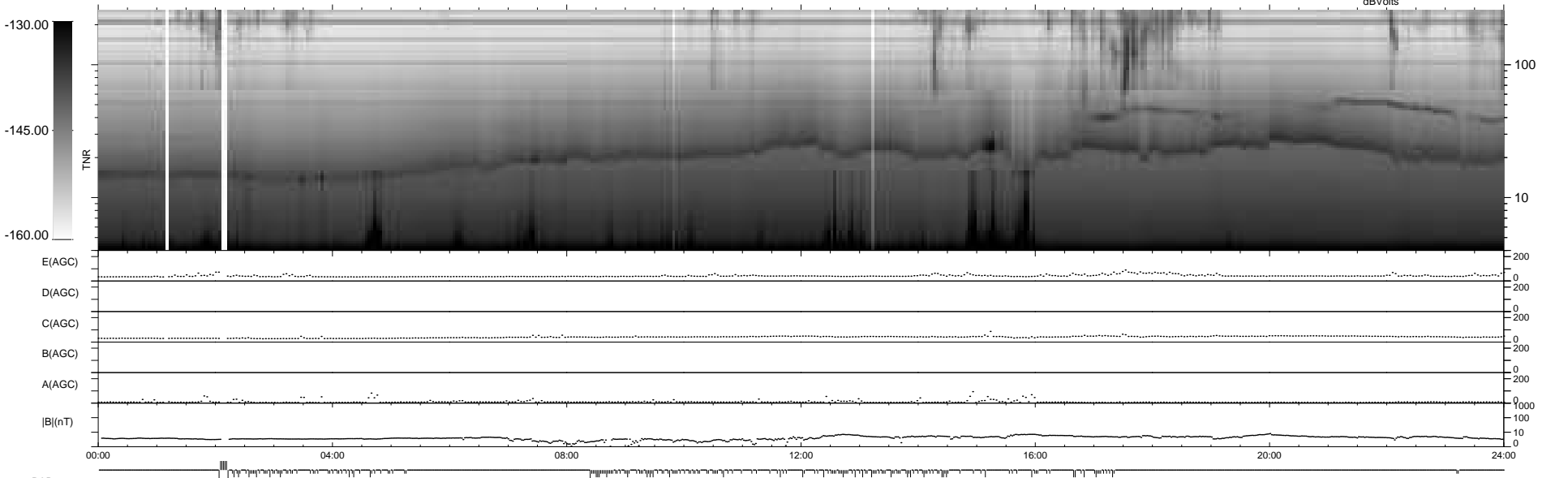
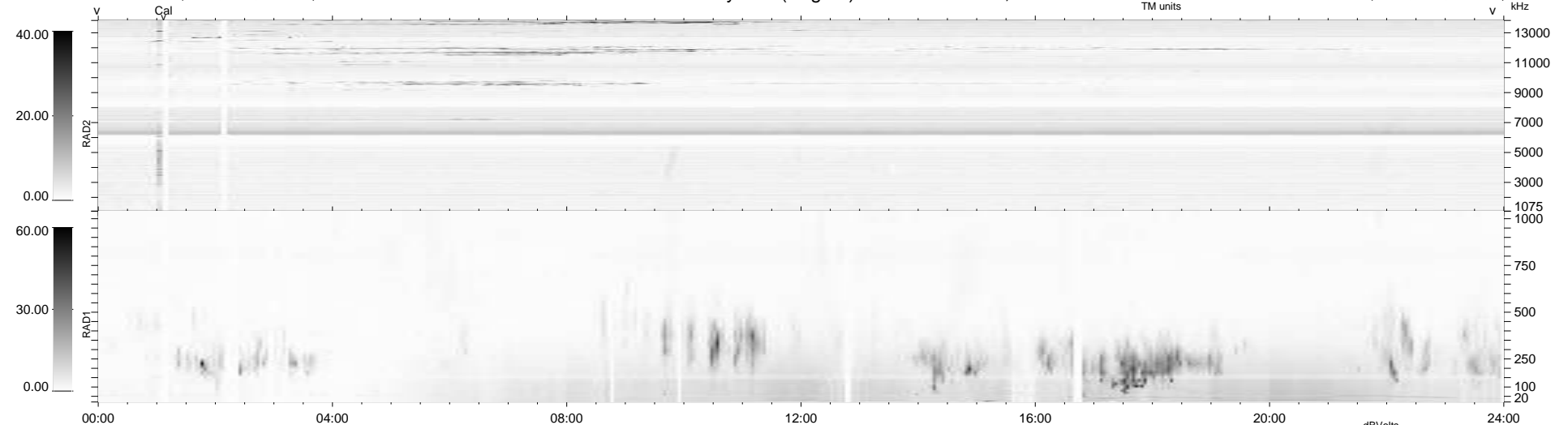
207 bad + 727 good MF/939MF projected (77%) - 5 missing MFs  
 Avg interval = 180 secs  
 Re = 257.56 (253.44, 45.82, 1.65 GSE)

windlib 2.0b

LZ version = v01

### WIND/WAVES Summary Plot (Page 1) for 01-FEB-2020, DOY = 32

DAILY 2020-02-03 11:20:45  
 Re = 257.58 (254.02, 42.64, 1.88 GSE)



E(AGC) 0 200  
 D(AGC) 0 200  
 C(AGC) 0 200  
 B(AGC) 0 200  
 A(AGC) 0 200  
 |B|(nT) 0 1000  
 0 100  
 0 10

00:00 04:00 08:00 12:00 16:00 20:00 24:00

RAD2  
 Antenna Ey  
 Mode LIN(1)  
 SUM/SEP SEP  
 Toggle OFF

RAD1  
 Antenna Ex  
 Mode LIS(2,4)  
 SUM/SEP SUM  
 Toggle OFF

TNR  
 Antenna ExEy  
 Mode A-32  
 Sweep ACE