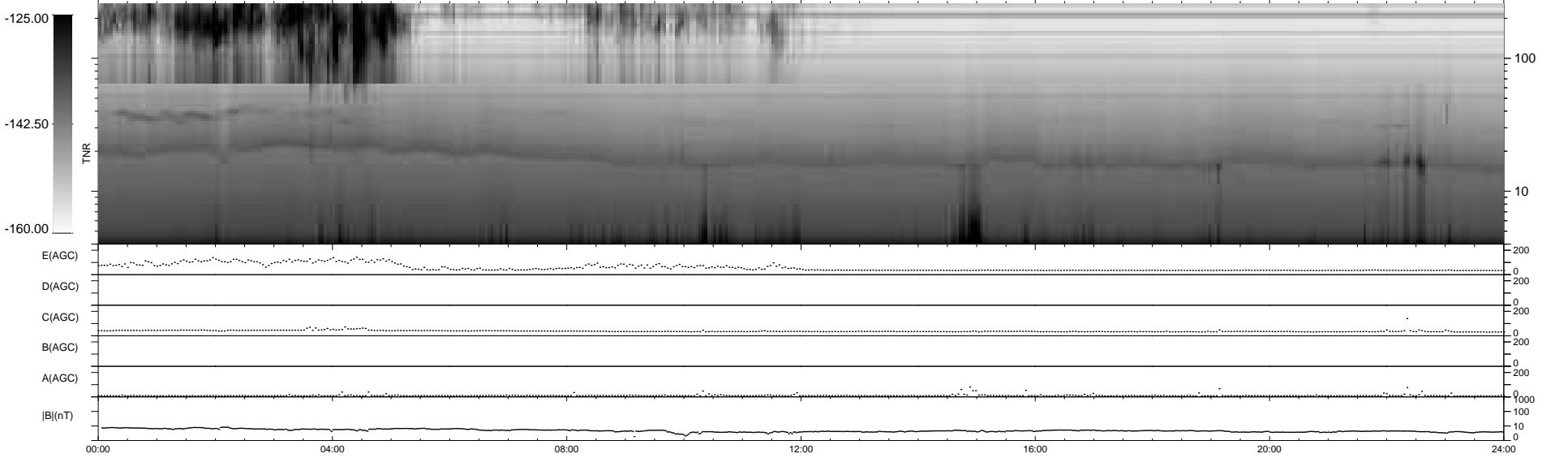
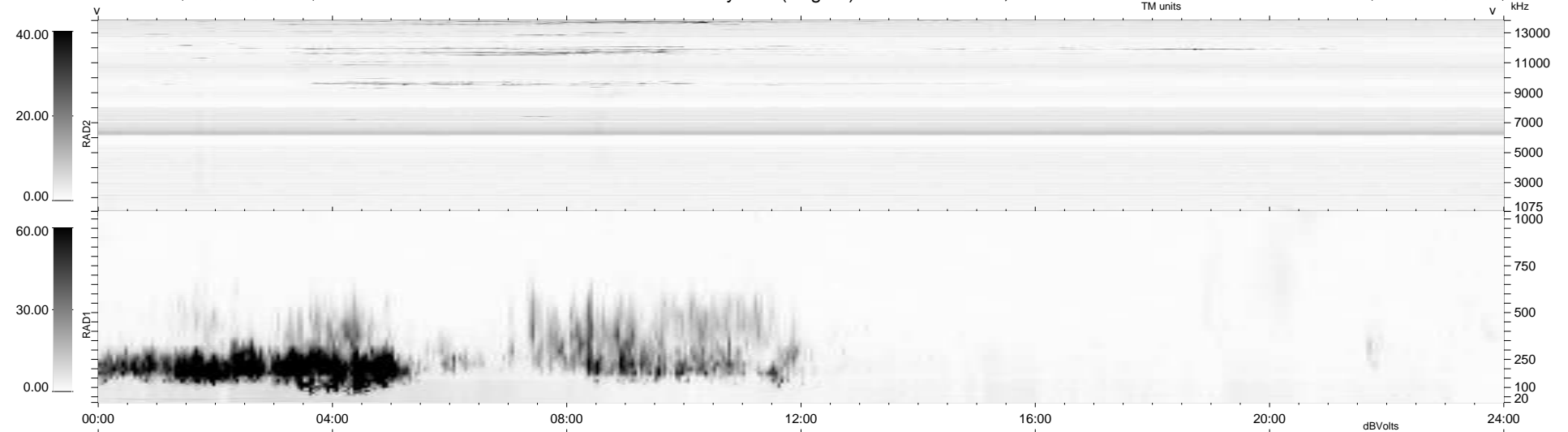


9 bad + 930 good MF/939MF projected (99%) - 0 missing MFs
 Avg interval = 180 secs
 Re = 257.51 (252.81, 48.94, 1.42 GSE)

windlib 2.0b LZ version = v01
 DAILY 2020-02-02 13:20:41
 Re = 257.55 (253.44, 45.84, 1.65 GSE)

WIND/WAVES Summary Plot (Page 1) for 31-JAN-2020, DOY = 31



RAD2
 Antenna Ey
 Mode LIN(1)
 SUM/SEP SEP
 Toggle OFF
 RAD1
 Antenna Ex
 Mode LIS(2,4)
 SUM/SEP SUM
 Toggle OFF
 TNR
 Antenna ExEy
 Mode A-32
 Sweep ACE