

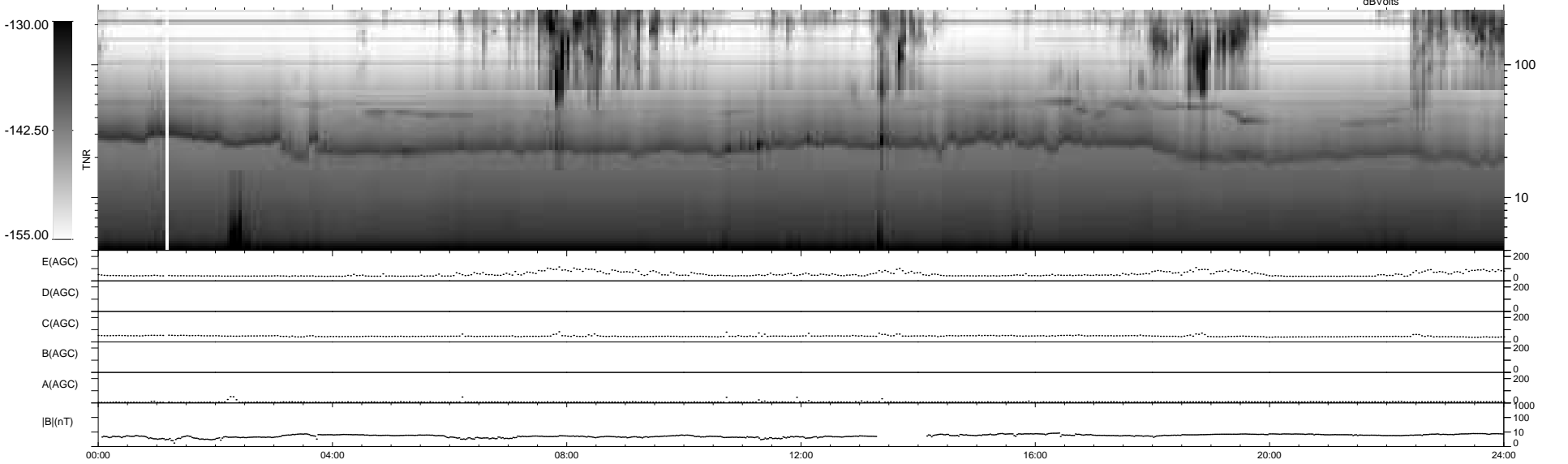
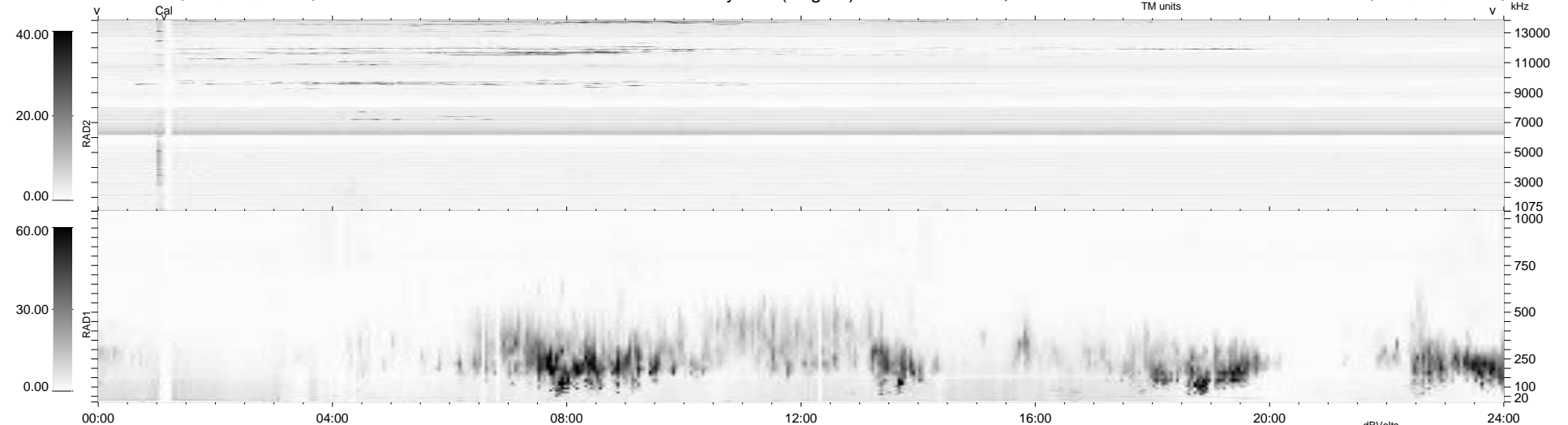
25 bad + 914 good MF/939MF projected (97%) - 0 missing MFs  
 Avg interval = 180 secs  
 Re = 257.42 (252.12, 51.97, 1.18 GSE)

windlib 2.0b

LZ version = v02

### WIND/WAVES Summary Plot (Page 1) for 30-JAN-2020, DOY = 30

DAILY 2020-02-03 11:20:06  
 Re = 257.51 (252.80, 48.96, 1.41 GSE)



```

RAD2
Antenna Ey .....
Mode LIN(1) .....
SUM/SEP SEP .....
Toggle OFF .....

RAD1
Antenna Ex .....
Mode LIS(2,4) .....
SUM/SEP SUM .....
Toggle OFF .....

TNR
Antenna ExEy .....
Mode A-32 .....
Sweep ACE .....
  
```