

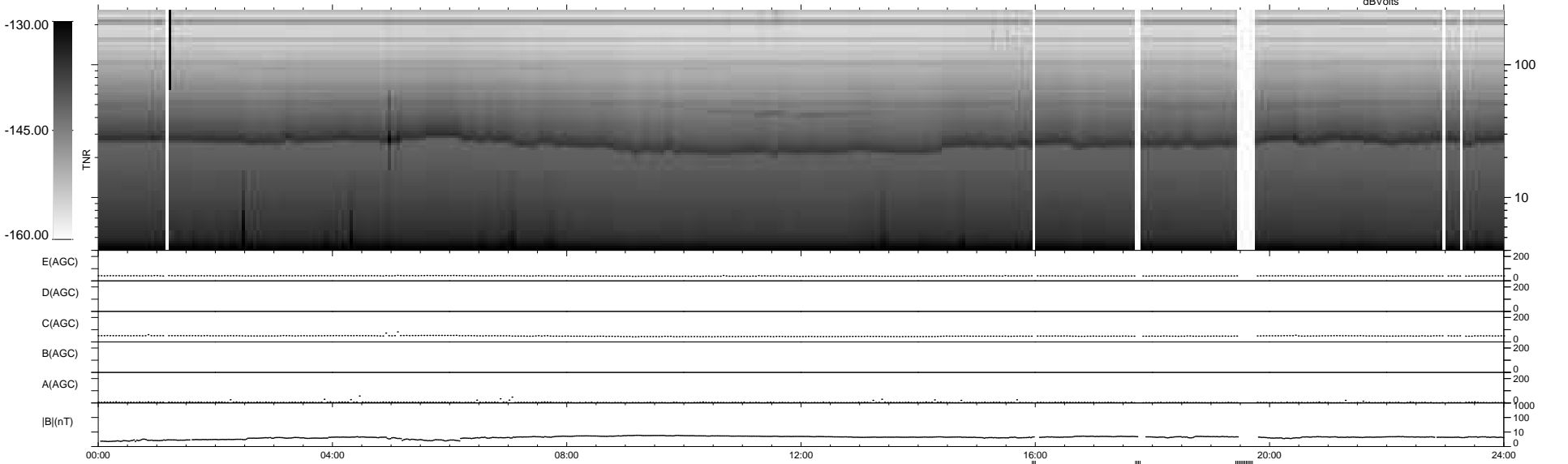
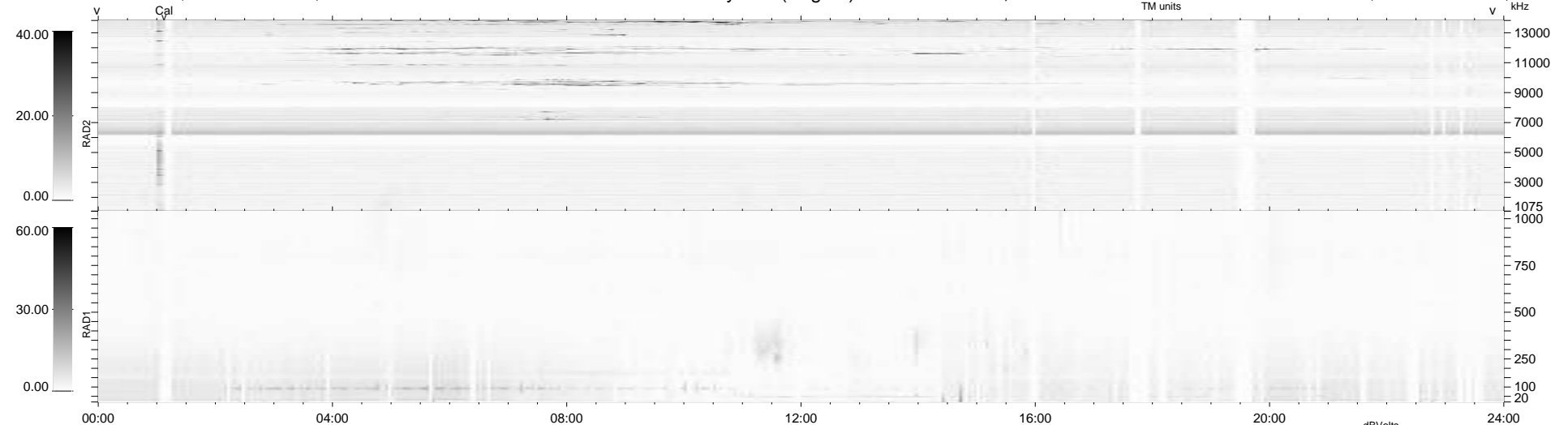
367 bad + 554 good MF/940MF projected (58%) - 19 missing MFs  
 Avg interval = 180 secs  
 Re = 249.94 (233.41, 89.35, -2.39 GSE)

windlib 2.0b

LZ version = v01

### WIND/WAVES Summary Plot (Page 1) for 14-JAN-2020, DOY = 14

DAILY 2020-01-15 10:20:41  
 Re = 250.61 (234.80, 87.58, -2.17 GSE)



```

RAD2
Antenna Ey .....
Mode LIN(1) .....
SUM/SEP SEP .....
Toggle OFF .....

RAD1
Antenna Ex .....
Mode LIS(2,4) .....
SUM/SEP SUM .....
Toggle OFF .....

TNR
Antenna ExEy .....
Mode A-32 .....
Sweep ACE .....
  
```