

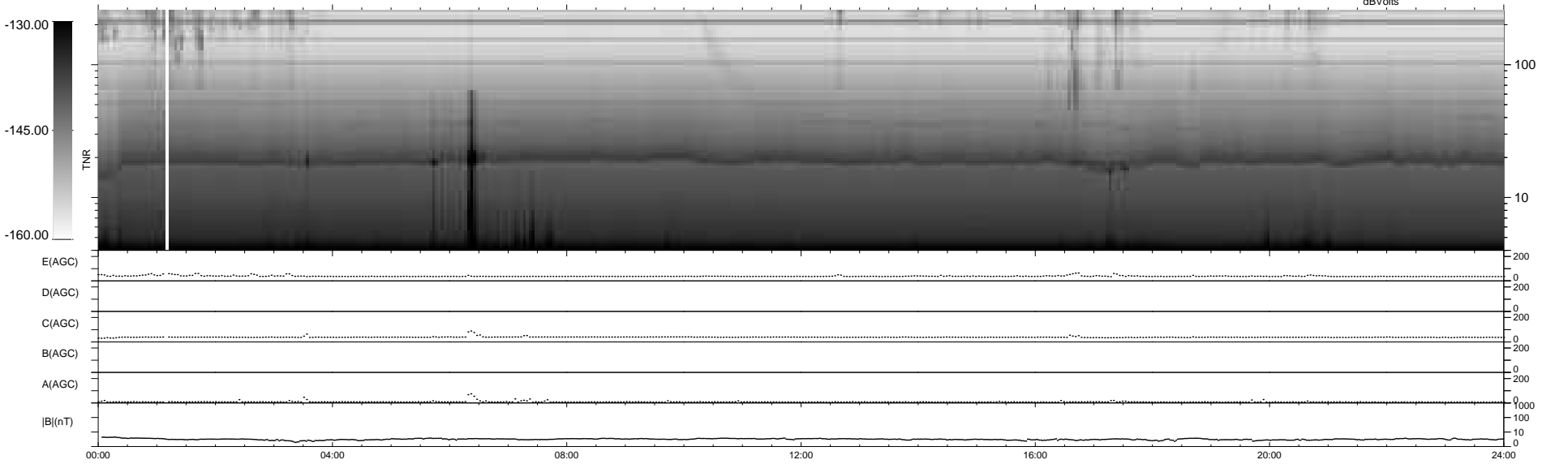
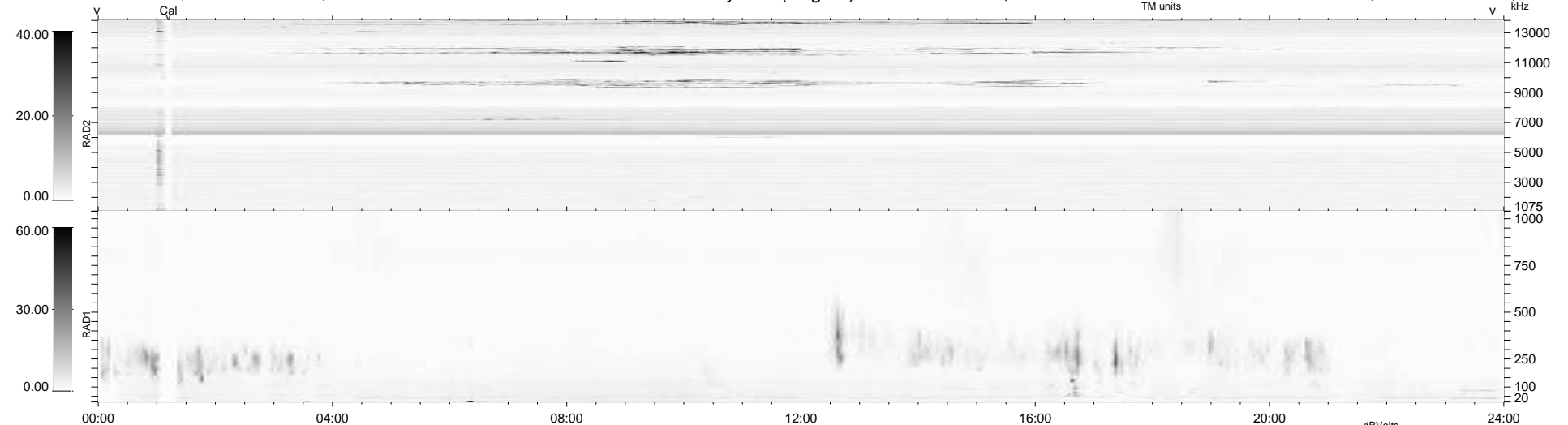
24 bad + 915 good MF/939MF projected (97%) - 0 missing MFs  
 Avg interval = 180 secs  
 Re = 242.22 (220.20, 100.81, -4.12 GSE)

windlib 2.0b

LZ version = v01

### WIND/WAVES Summary Plot (Page 1) for 12-JAN-2019, DOY = 12

DAILY 2019-01-14 00:20:13  
 Re = 243.09 (221.30, 100.51, -3.86 GSE)



RAD2  
 Antenna Ey .....  
 Mode LIN(1) .....  
 SUM/SEP SEP .....  
 Toggle OFF .....  
 RAD1  
 Antenna .....  
 Mode .....  
 SUM/SEP .....  
 Toggle .....  
 TNR  
 Antenna ExEy .....  
 Mode A-32 .....  
 Sweep ACE .....