

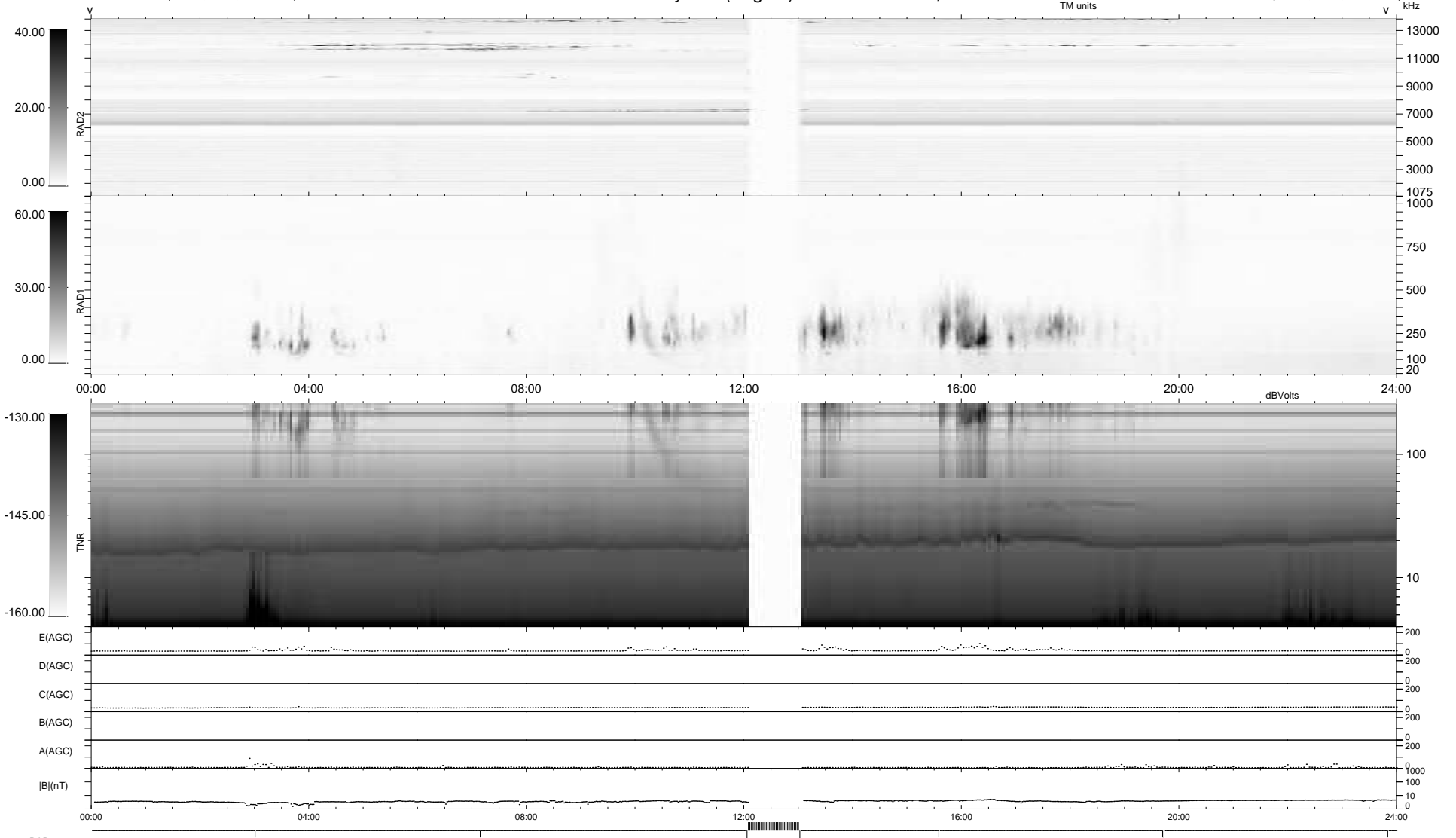
8 bad + 894 good MF/939MF projected (95%) - 37 missing MFs
 Avg interval = 180 secs
 Re = 204.12 (196.84, 53.39, -8.24 GSE)

windlib 2.0b

LZ version = v01

WIND/WAVES Summary Plot (Page 1) for 13-DEC-2018, DOY = 347

DAILY 2018-12-15 01:20:04
 Re = 205.11 (196.97, 56.60, -8.27 GSE)



```

RAD2
Antenna Ey .....
Mode LIN(1) .....
SUM/SEP SEP .....
Toggle OFF .....

RAD1
Antenna Ex .....
Mode LIS(2,4) .....
SUM/SEP SUM .....
Toggle OFF .....

TNR
Antenna ExEy .....
Mode A-32 .....
Sweep ACE .....
  
```