

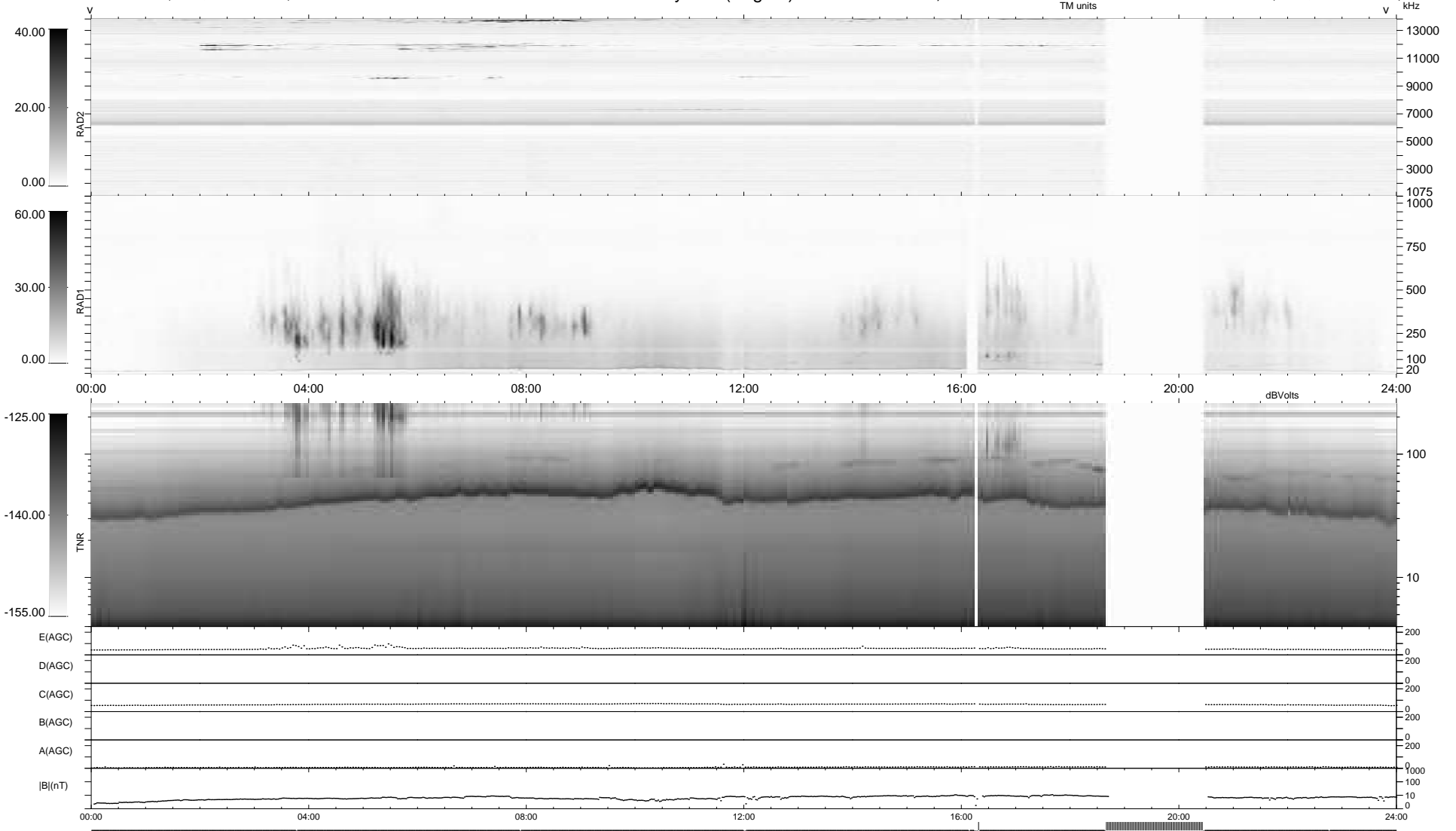
11 bad + 857 good MF/939MF projected (91%) - 71 missing MFs
 Avg interval = 180 secs
 Re = 195.62 (195.30, 8.80, -6.76 GSE)

windlib 2.0b

LZ version = v01

WIND/WAVES Summary Plot (Page 1) for 01-DEC-2018, DOY = 335

DAILY 2018-12-02 23:20:13
 Re = 195.99 (195.46, 12.66, -6.94 GSE)



```

RAD2
Antenna Ey .....
Mode LIN(1) .....
SUM/SEP SEP .....
Toggle OFF .....

RAD1
Antenna Ex .....
Mode LIS(2,4) .....
SUM/SEP SUM .....
Toggle OFF .....

TNR
Antenna ExEy .....
Mode A-32 .....
Sweep ACE .....
  
```