

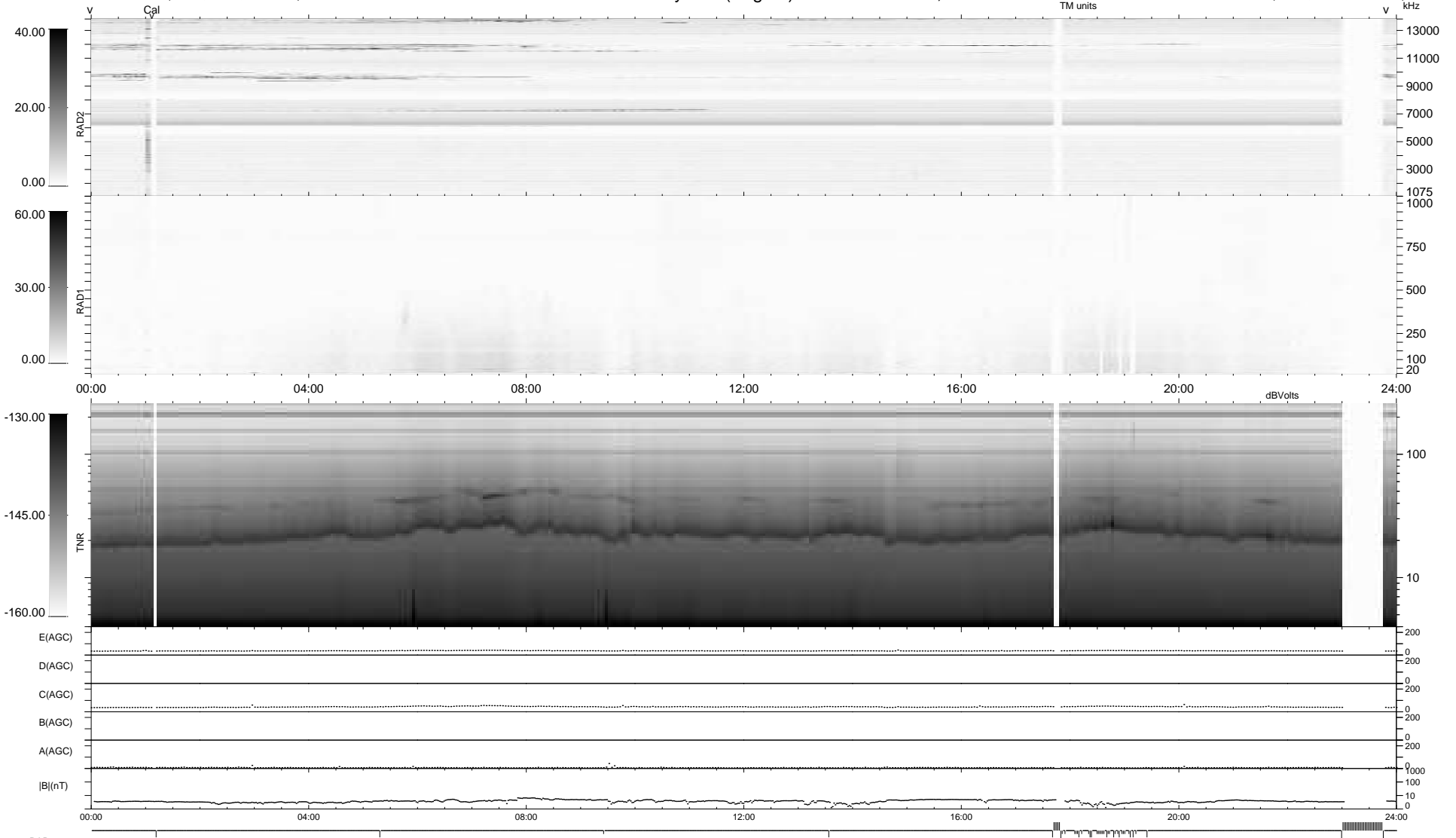
39 bad + 866 good MF/939MF projected (92%) - 34 missing MFs
 Avg interval = 180 secs
 Re = 204.66 (197.87, -52.23, -1.99 GSE)

windlib 2.0b

LZ version = v01

WIND/WAVES Summary Plot (Page 1) for 14-NOV-2018, DOY = 318

DAILY 2018-11-15 21:20:13
 Re = 203.41 (197.42, -48.96, -2.34 GSE)



```

RAD2
Antenna Ey .....
Mode LIN(1) .....
SUM/SEP SEP .....
Toggle OFF .....

RAD1
Antenna Ex .....
Mode LIS(2,4) .....
SUM/SEP SUM .....
Toggle OFF .....

TNR
Antenna ExEy .....
Mode A-32 .....
Sweep ACE .....
  
```