

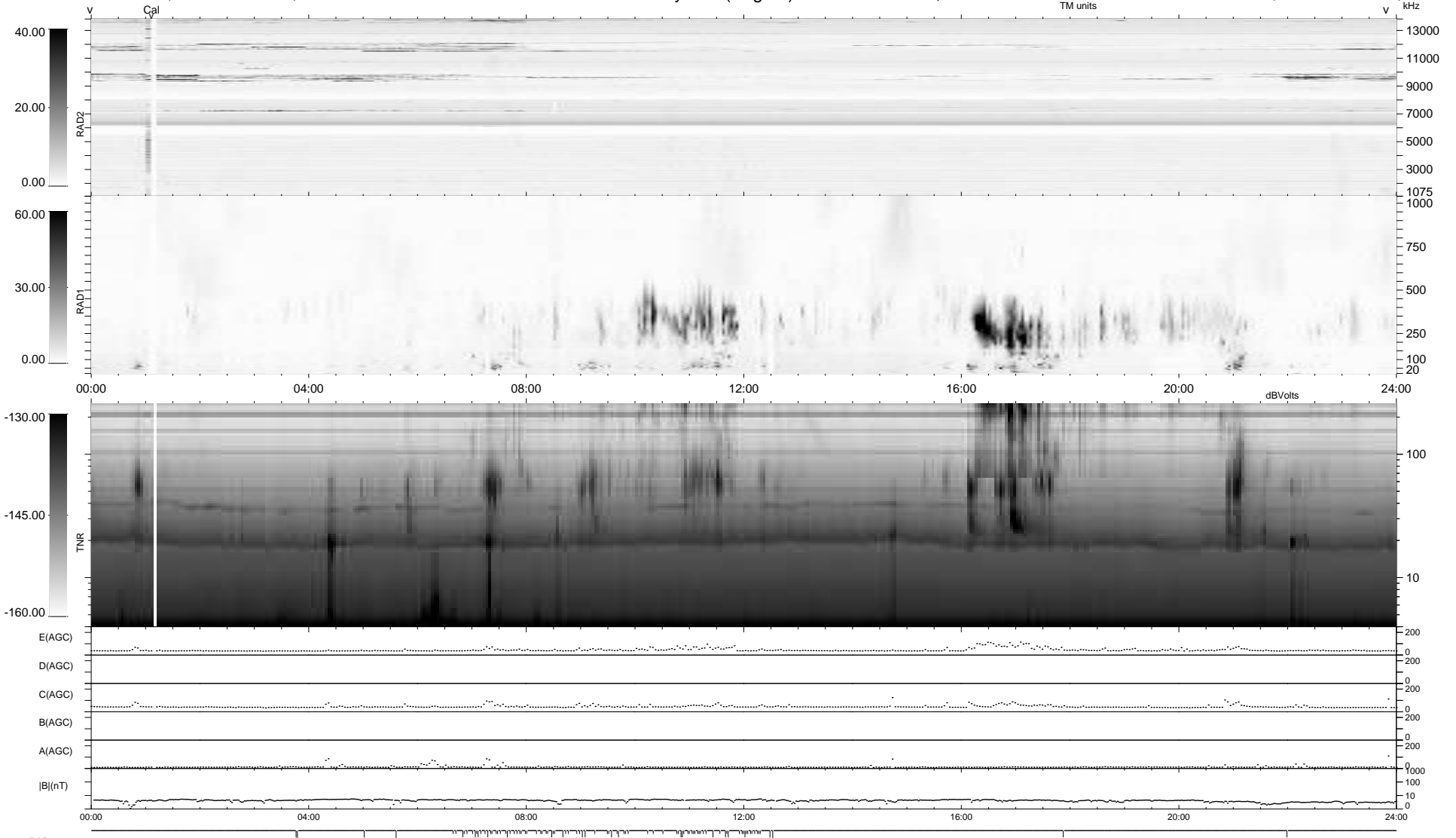
93 bad + 846 good MF/939MF projected (90%) - 0 missing MFs
 Avg interval = 180 secs
 Re = 250.86 (230.85, -97.78, 8.82 GSE)

windlib 2.0b

LZ version = v01

WIND/WAVES Summary Plot (Page 1) for 09-OCT-2018, DOY = 282

DAILY 2018-10-10 17:20:13
 Re = 249.92 (229.53, -98.48, 8.64 GSE)



RAD2
 Antenna Ey
 Mode LIN(1)
 SUM/SEP SEP
 Toggle OFF
 RAD1
 Antenna Ex
 Mode LIS(2,4)
 SUM/SEP SUM
 Toggle OFF
 TNR
 Antenna ExEy
 Mode A-32
 Sweep ACE