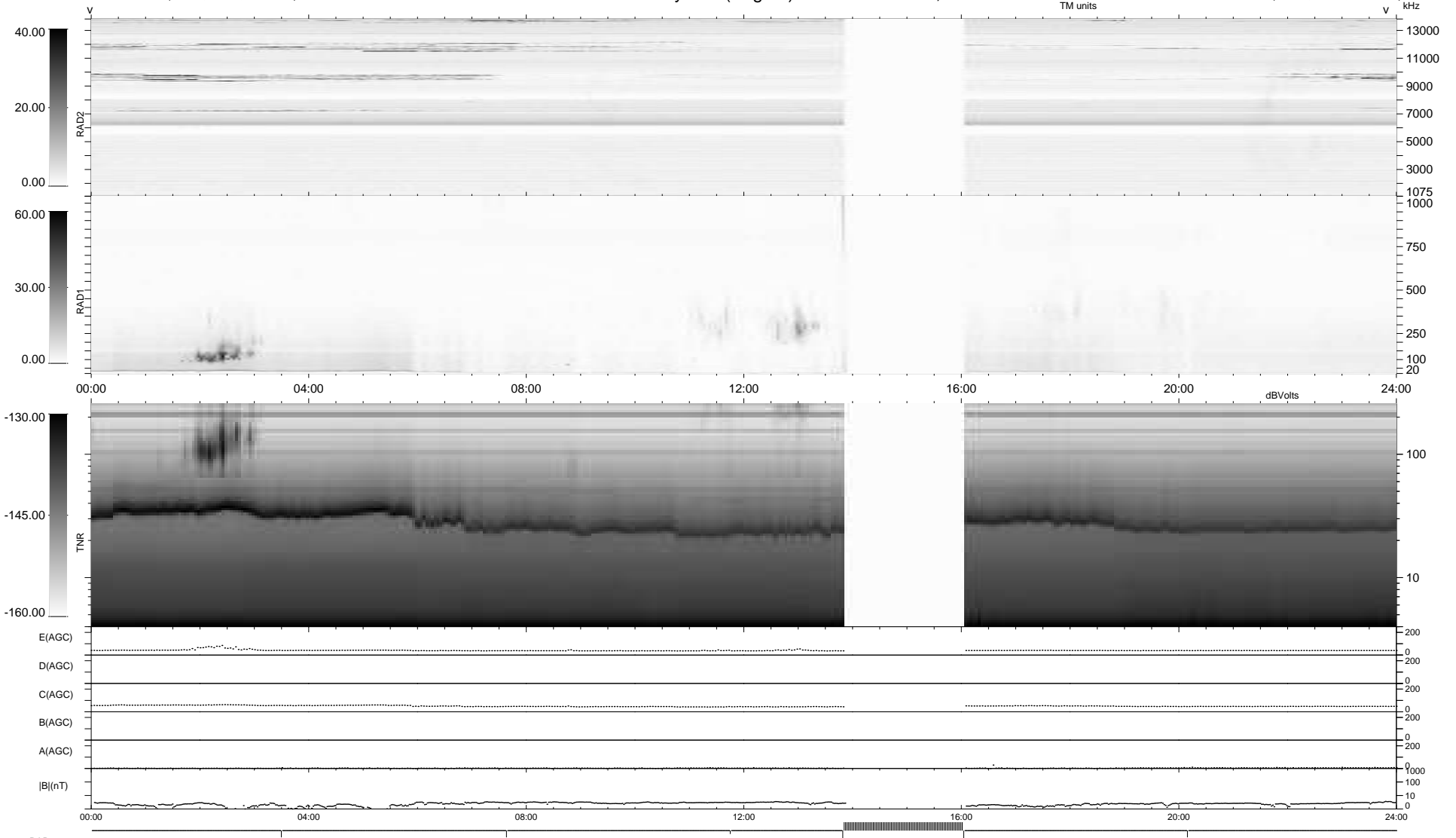


6 bad + 847 good MF/939MF projected (90%) - 86 missing MFs
 Avg interval = 180 secs
 Re = 253.27 (234.62, -94.94, 9.29 GSE)

windlib 2.0b LZ version = v01
 DAILY 2018-10-07 17:20:04
 Re = 252.54 (233.40, -96.01, 9.15 GSE)

WIND/WAVES Summary Plot (Page 1) for 06-OCT-2018, DOY = 279



```

RAD2
Antenna Ey .....
Mode LIN(1) .....
SUM/SEP SEP .....
Toggle OFF .....

RAD1
Antenna Ex .....
Mode LIS(2,4) .....
SUM/SEP SUM .....
Toggle OFF .....

TNR
Antenna ExEy .....
Mode A-32 .....
Sweep ACE .....
  
```