

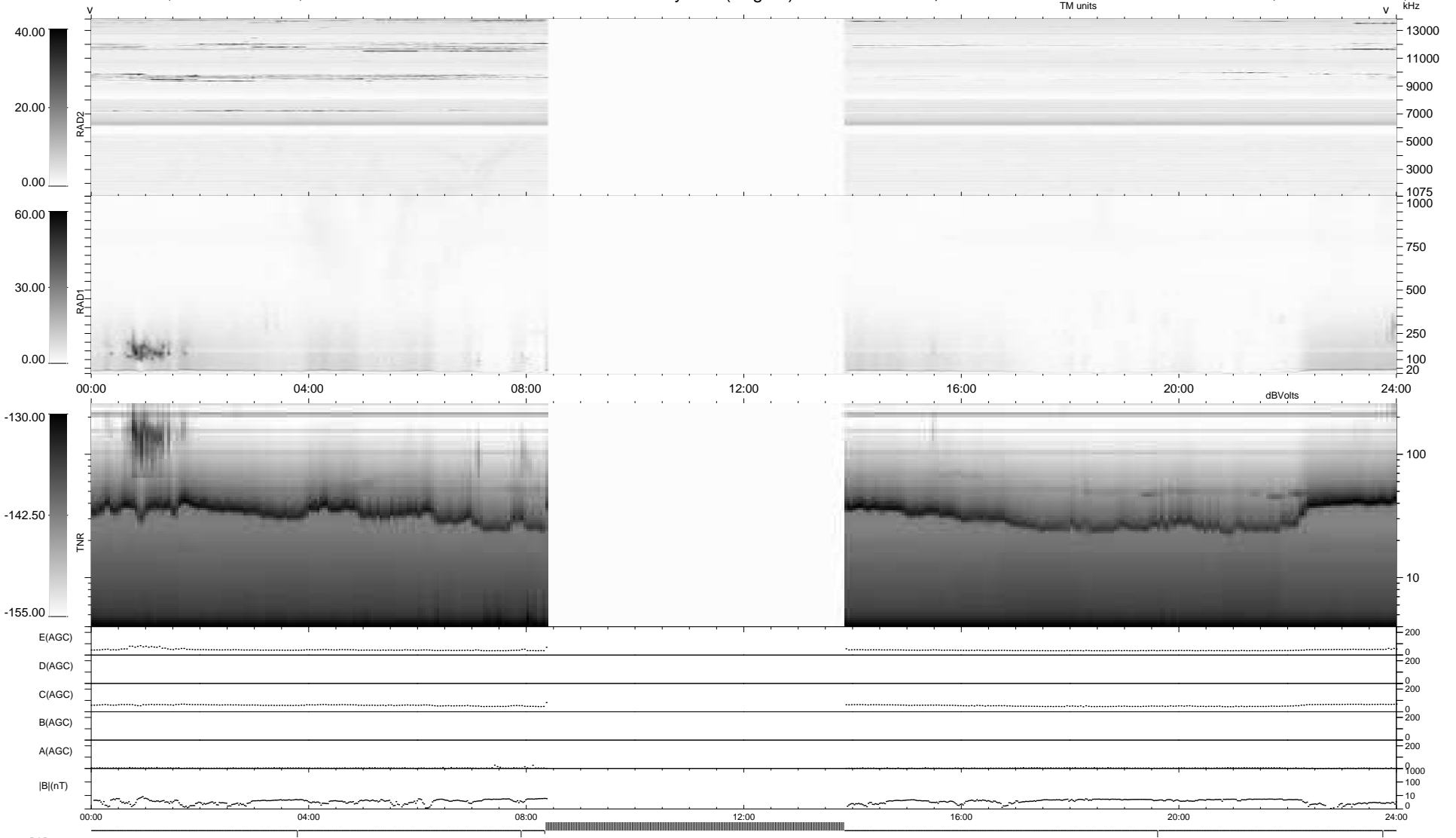
5 bad + 719 good MF/939MF projected (76%) - 215 missing MFs  
 Avg interval = 180 secs  
 Re = 258.62 (248.28, -71.66, 10.34 GSE)

windlib 2.0b

LZ version = v02

### WIND/WAVES Summary Plot (Page 1) for 24-SEP-2018, DOY = 267

DAILY 2018-09-25 11:20:13  
 Re = 258.25 (247.14, -74.21, 10.29 GSE)



RAD2  
 Antenna Ey .....  
 Mode LIN(1) .....  
 SUM/SEP SEP .....  
 Toggle OFF .....  
 RAD1  
 Antenna Ex .....  
 Mode LIS(2,4) .....  
 SUM/SEP SUM .....  
 Toggle OFF .....  
 TNR  
 Antenna ExEy .....  
 Mode A-32 .....  
 Sweep ACE .....