

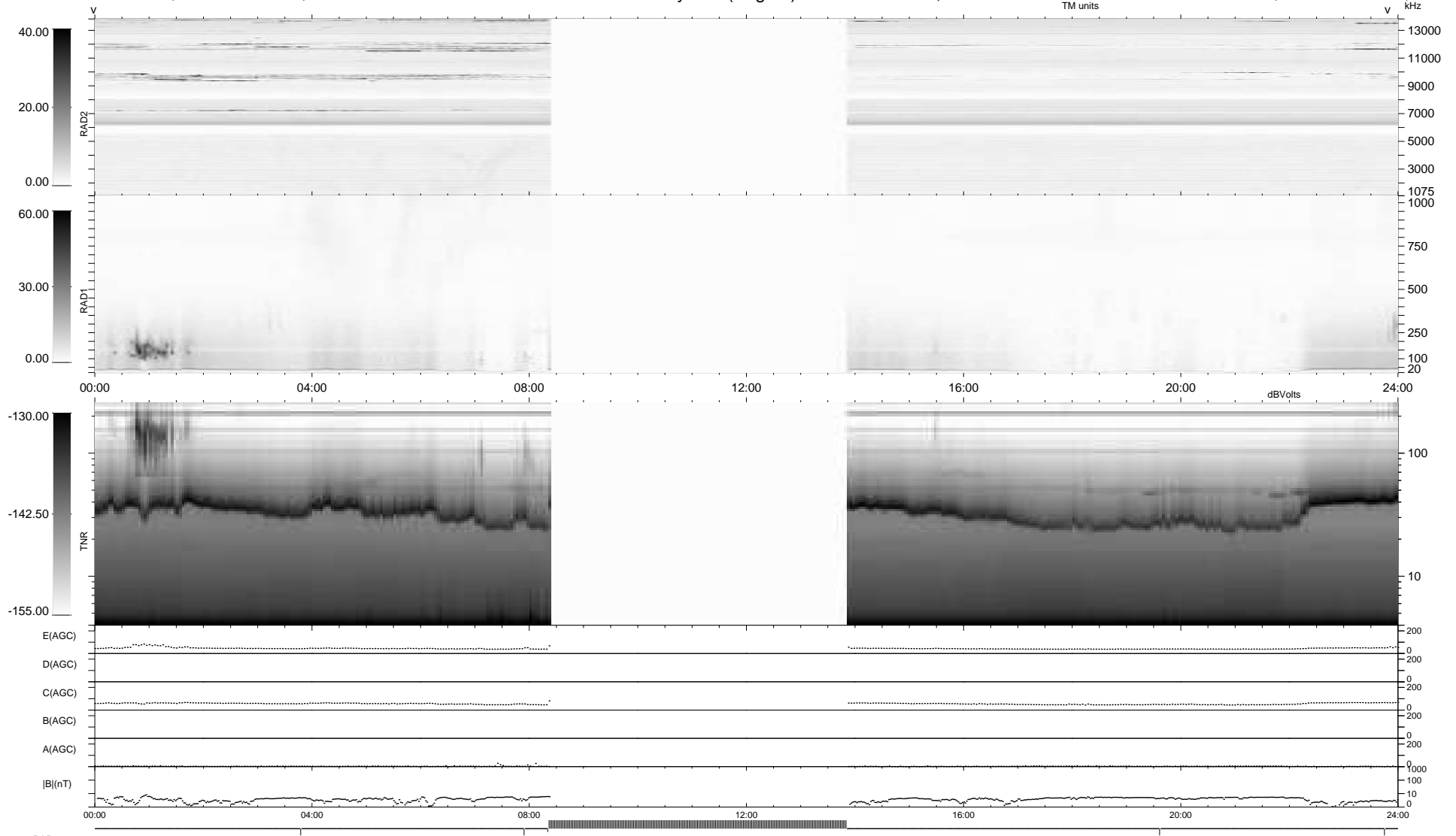
5 bad + 719 good MF/939MF projected (76%) - 215 missing MFs
 Avg interval = 180 secs
 Re = -258.62 (248.28, -71.66, 10.34 GSE)

windlib 2.0b

LZ version = v01

WIND/WAVES Summary Plot (Page 1) for 24-SEP-2018, DOY = 267

DAILY 2018-09-25 10:20:04
 Re = 258.25 (247.14, -74.21, 10.29 GSE)



```

RAD2
Antenna Ey .....
Mode LIN(1) .....
SUM/SEP SEP .....
Toggle OFF .....

RAD1
Antenna Ex .....
Mode LIS(2,4) .....
SUM/SEP SUM .....
Toggle OFF .....

TNR
Antenna ExEy .....
Mode A-32 .....
Sweep ACE .....
  
```