

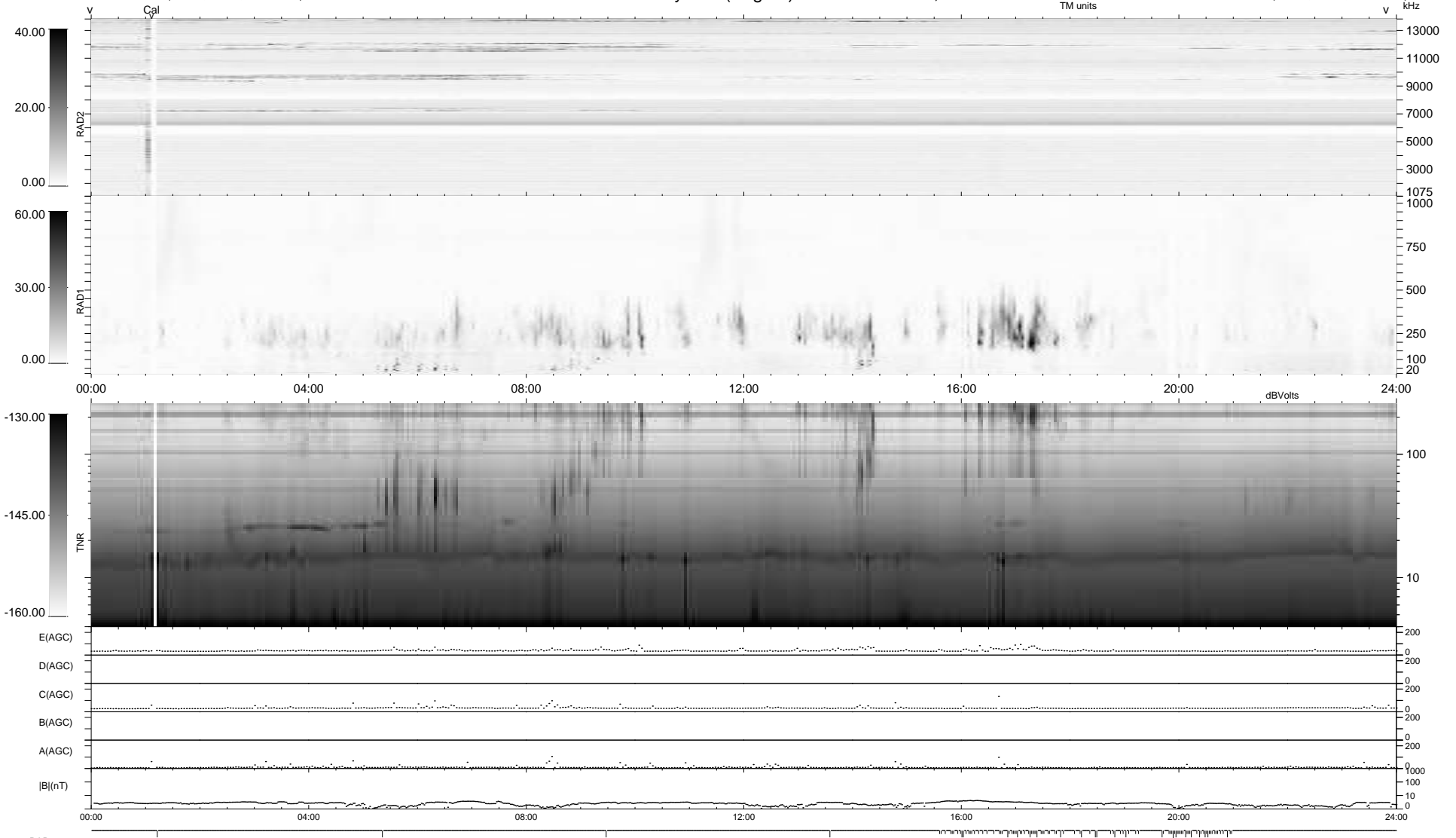
103 bad + 836 good MF/939MF projected (89%) - 0 missing MFs
Avg interval = 180 secs
Re = 262.20 (257.93, -46.01, 10.35 GSE)

windlib 2.0b

LZ version = v01

WIND/WAVES Summary Plot (Page 1) for 15-SEP-2018, DOY = 258

DAILY 2018-09-16 19:20:04
Re = 261.83 (256.99, -49.00, 10.40 GSE)



RAD2
Antenna Ey
Mode LIN(1)
SUM/SEP SEP
Toggle OFF
RAD1
Antenna Ex
Mode LIS(2,4)
SUM/SEP SUM
Toggle OFF
TNR
Antenna ExEy
Mode A-32
Sweep ACE