

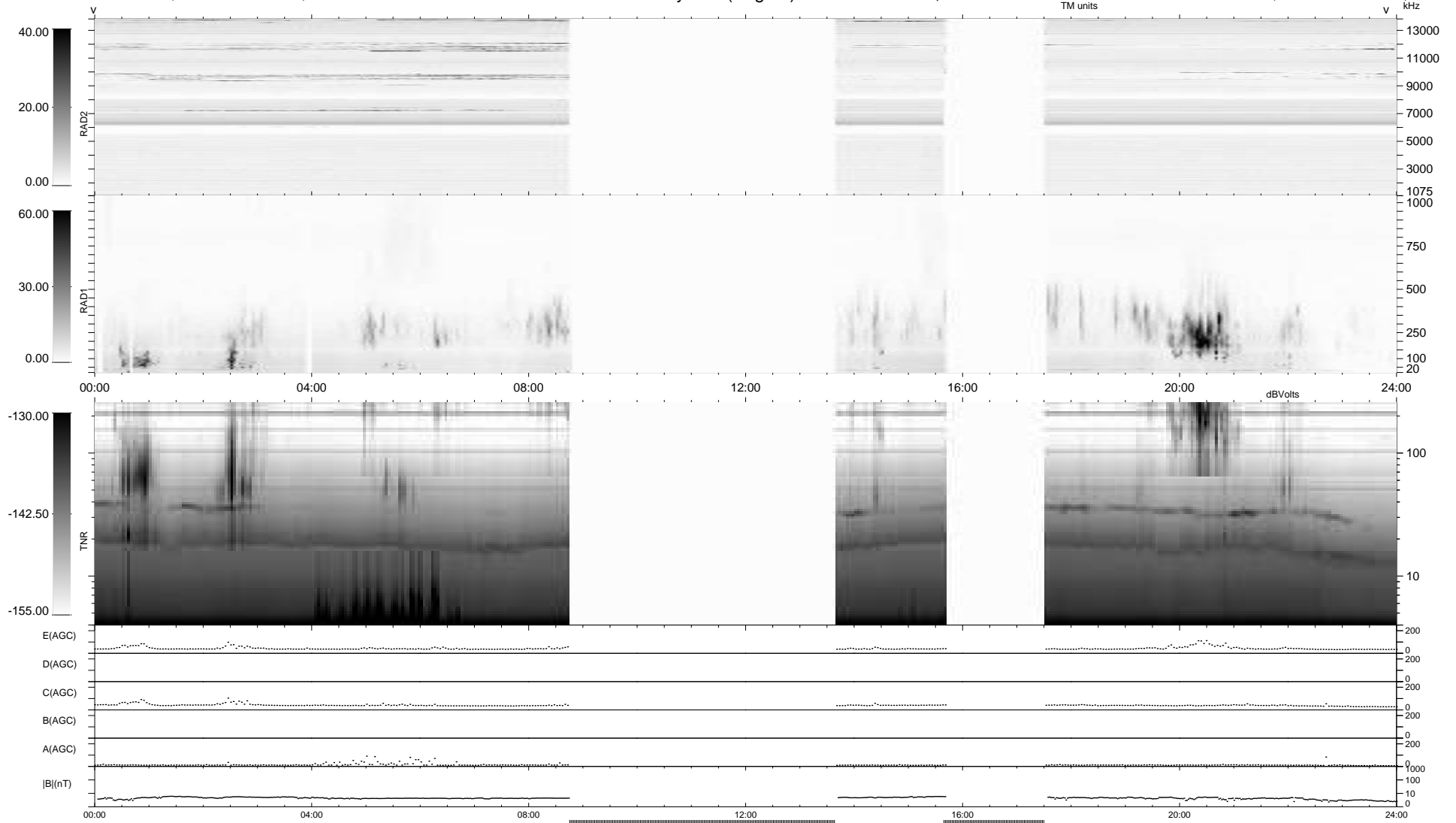
94 bad + 580 good MF/939MF projected (61%) - 265 missing MFs
 Avg interval = 180 secs
 Re = 262.56 (258.81, -42.98, 10.30 GSE)

windlib 2.0b

LZ version = v01

WIND/WAVES Summary Plot (Page 1) for 14-SEP-2018, DOY = 257

DAILY 2018-09-15 17:20:13
 Re = 262.21 (257.93, -45.99, 10.35 GSE)



```

RAD2
Antenna Ey .....
Mode LIN(1) .....
SUM/SEP SEP .....
Toggle OFF .....

RAD1
Antenna Ex .....
Mode LIS(2/4) .....
SUM/SEP SUM .....
Toggle OFF .....

TNR
Antenna ExEy .....
Mode A-32 .....
Sweep ACE .....
  
```