

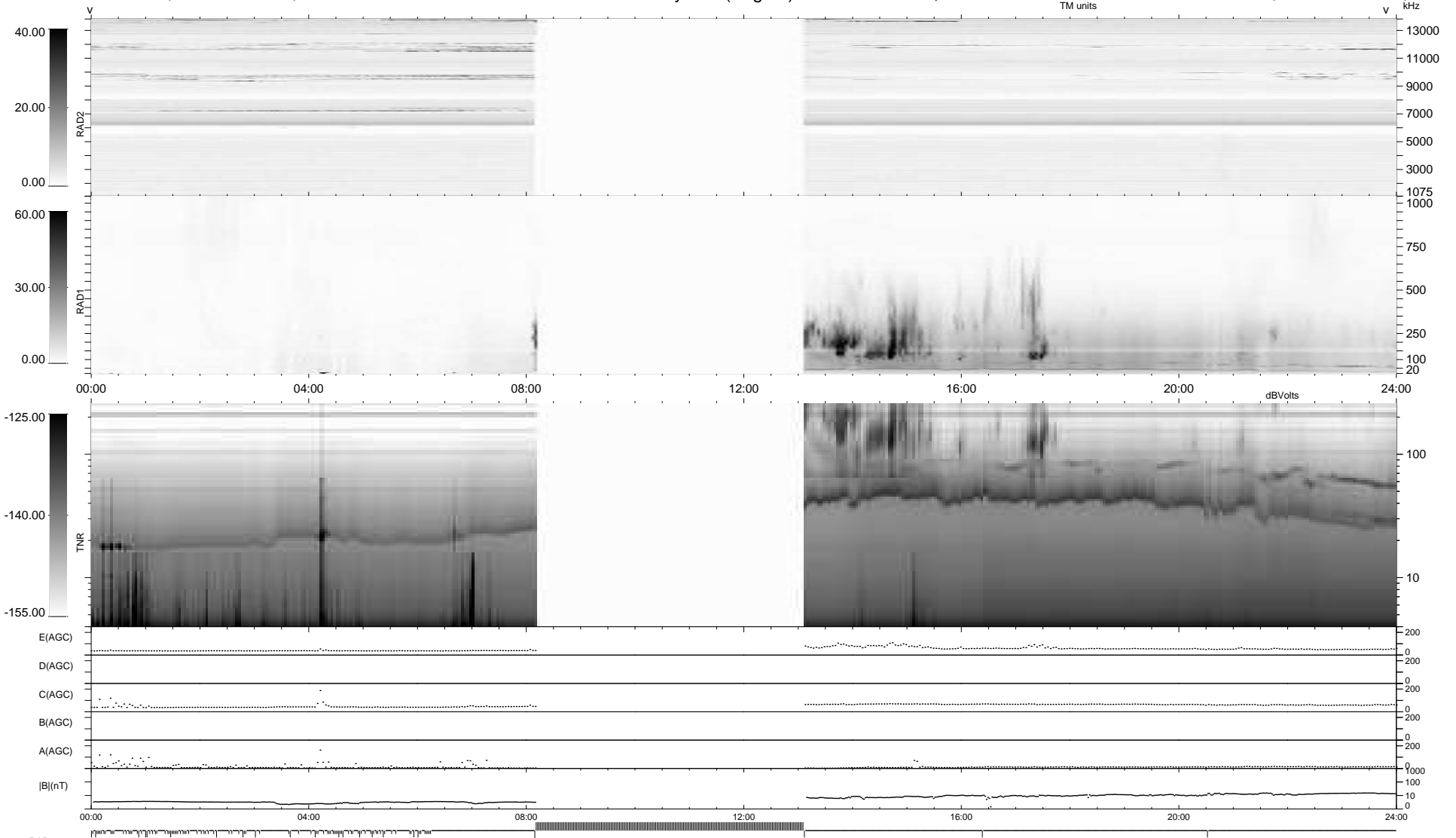
106 bad + 640 good MF/939MF projected (68%) - 193 missing MFs  
Avg interval = 180 secs  
Re = -263.61 (261.64, -30.61, 9.94 GSE)

windlib 2.0b

LZ version = v01

### WIND/WAVES Summary Plot (Page 1) for 10-SEP-2018, DOY = 253

DAILY 2018-09-11 10:20:04  
Re = 263.42 (261.06, -33.72, 10.05 GSE)



RAD2  
Antenna Ey .....  
Mode LIN(1) .....  
SUM/SEP SEP .....  
Toggle OFF .....  
RAD1  
Antenna .....  
Mode .....  
SUM/SEP .....  
Toggle .....  
TNR  
Antenna ExEy .....  
Mode A-32 .....  
Sweep ACE .....