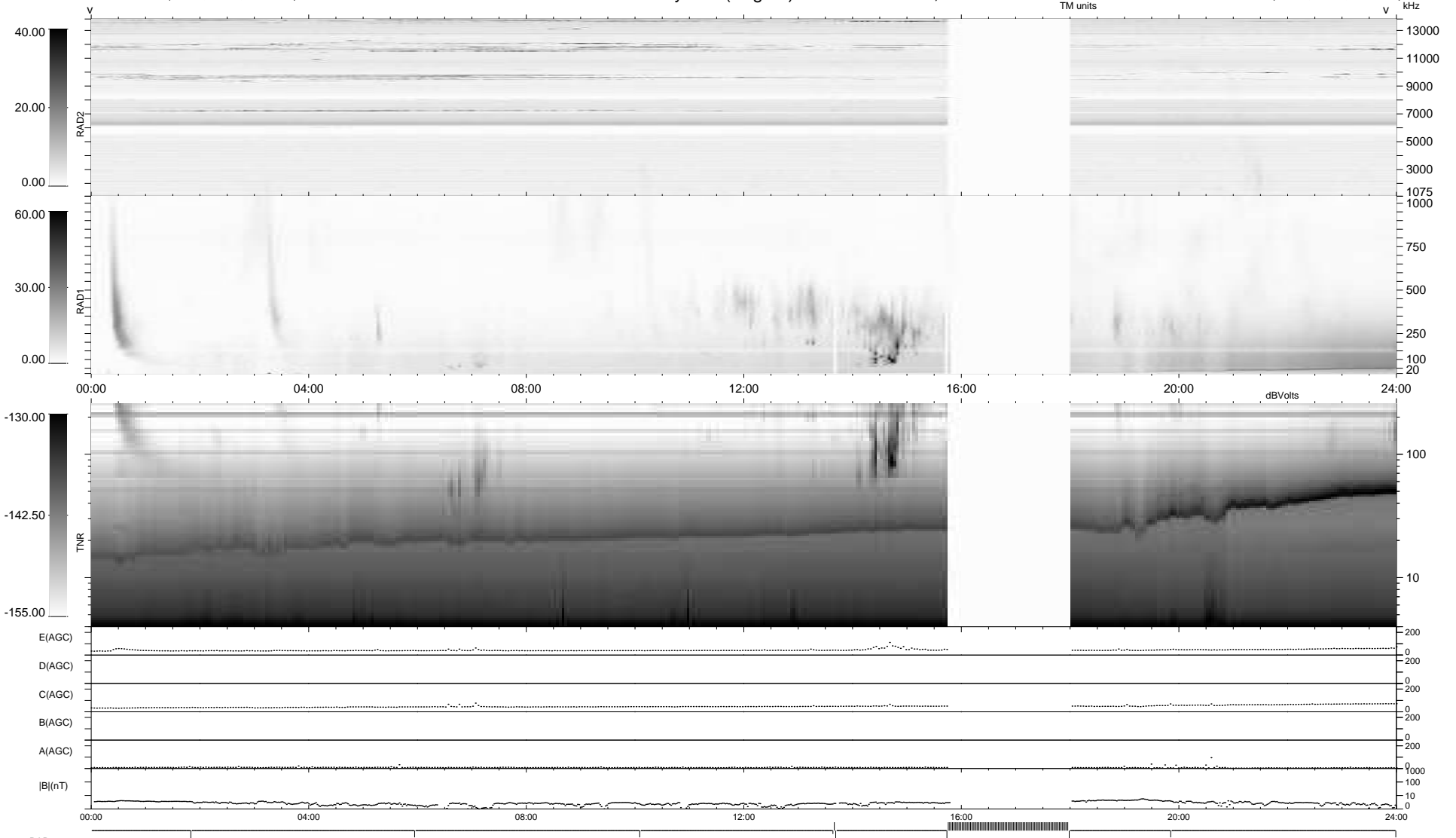


9 bad + 842 good MF/939MF projected (89%) - 88 missing MFs
 Avg interval = 180 secs
 Re = 263.87 (263.11, -17.69, 9.40 GSE)

windlib 2.0b LZ version = v01
 DAILY 2018-09-07 18:20:04
 Re = 263.88 (262.87, -20.96, 9.55 GSE)

WIND/WAVES Summary Plot (Page 1) for 06-SEP-2018, DOY = 249



```

RAD2
Antenna Ey .....
Mode LIN(1) .....
SUM/SEP SEP .....
Toggle OFF .....

RAD1
Antenna Ex .....
Mode LIS(2,4) .....
SUM/SEP SUM .....
Toggle OFF .....

TNR
Antenna ExEy .....
Mode A-32 .....
Sweep ACE .....
  
```