

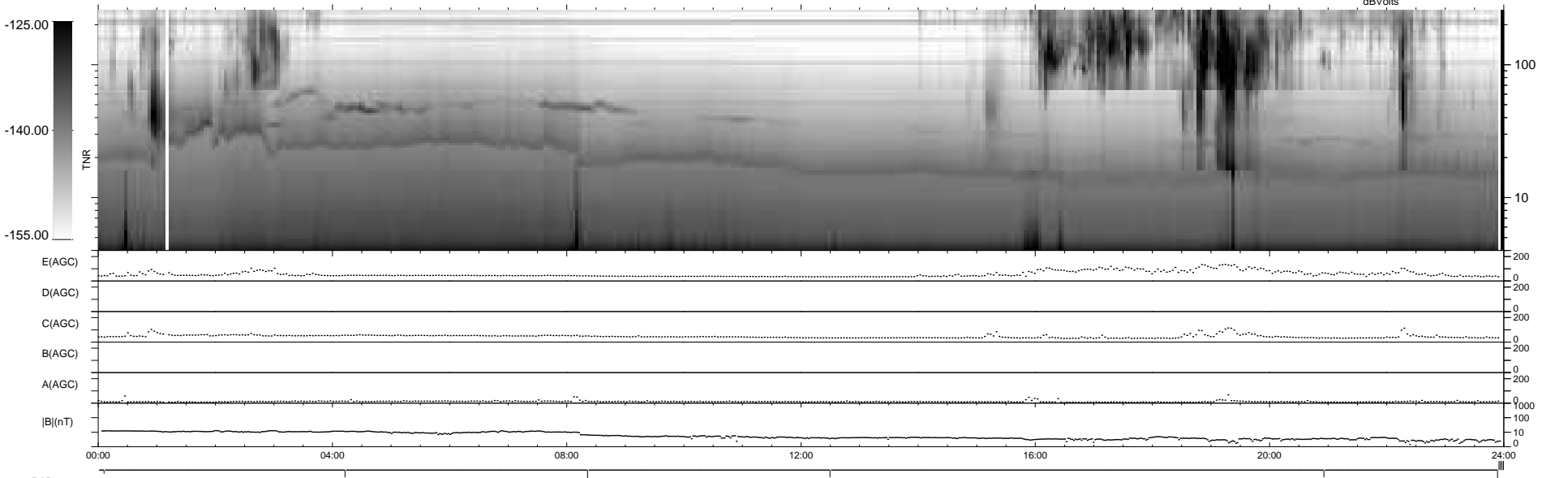
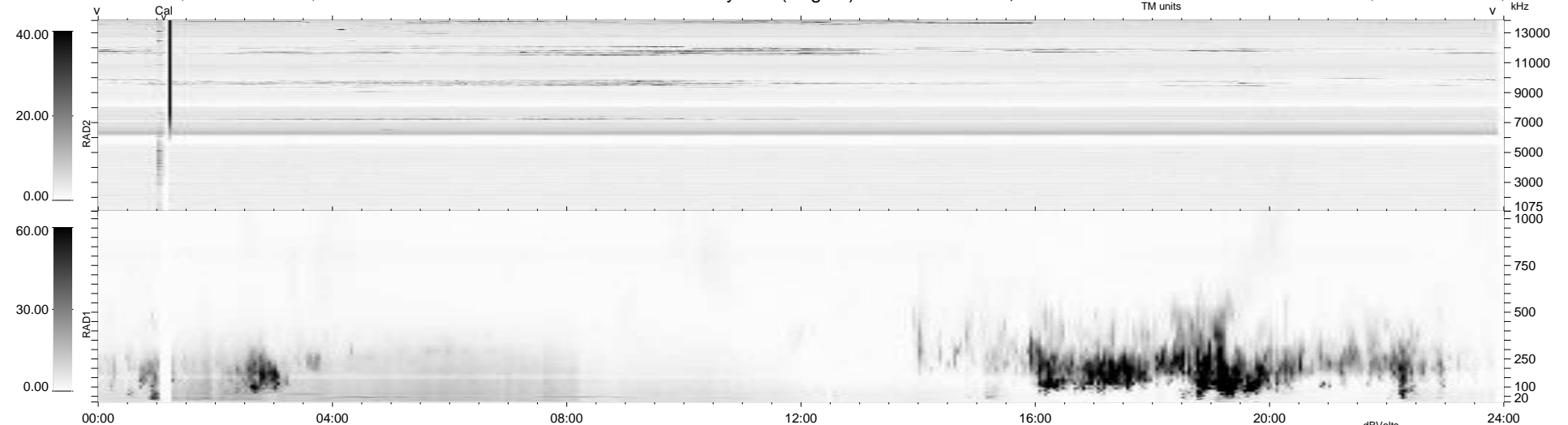
6 bad + 929 good MF/939MF projected (98%) - 4 missing MFs
 Avg interval = 180 secs
 Re = 263.58 (260.24, 41.39, 5.97 GSE)

windlib 2.0b

LZ version = v01

WIND/WAVES Summary Plot (Page 1) for 20-AUG-2018, DOY = 232

DAILY 2018-08-22 02:20:11
 Re = 263.49 (260.64, 38.15, 6.22 GSE)



RAD2
 Antenna Ey
 Mode LIN(1)
 SUM/SEP SEP
 Toggle OFF

RAD1
 Antenna Ex
 Mode LIS(2,4)
 SUM/SEP SUM
 Toggle OFF

TNR
 Antenna ExEy
 Mode A-32
 Sweep ACE