

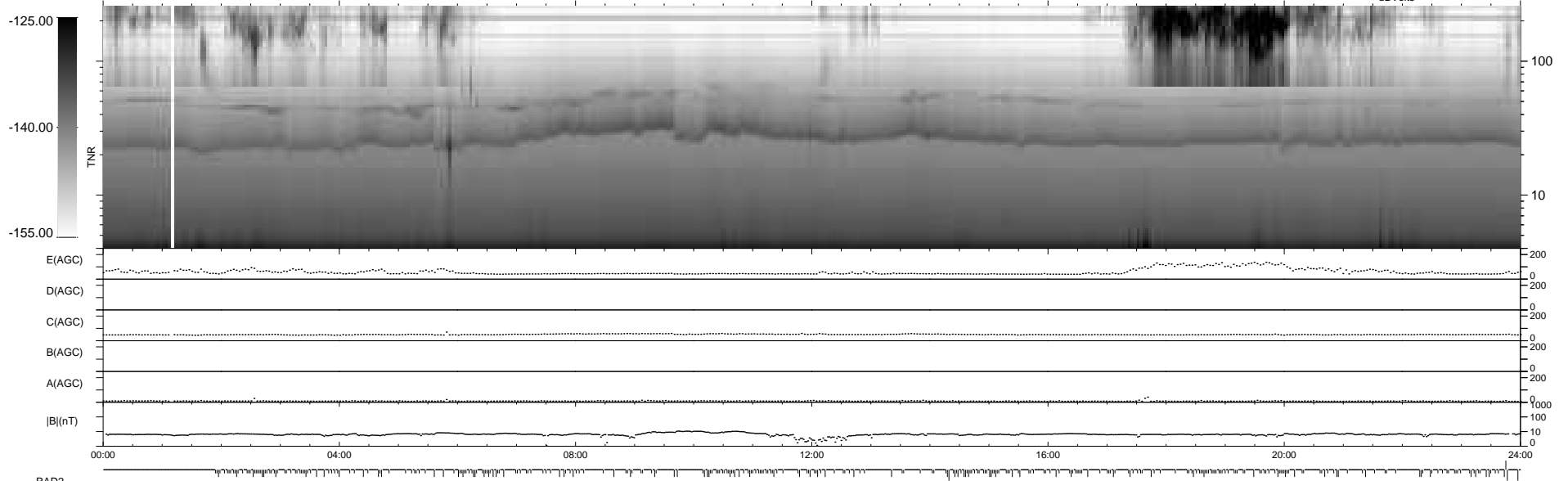
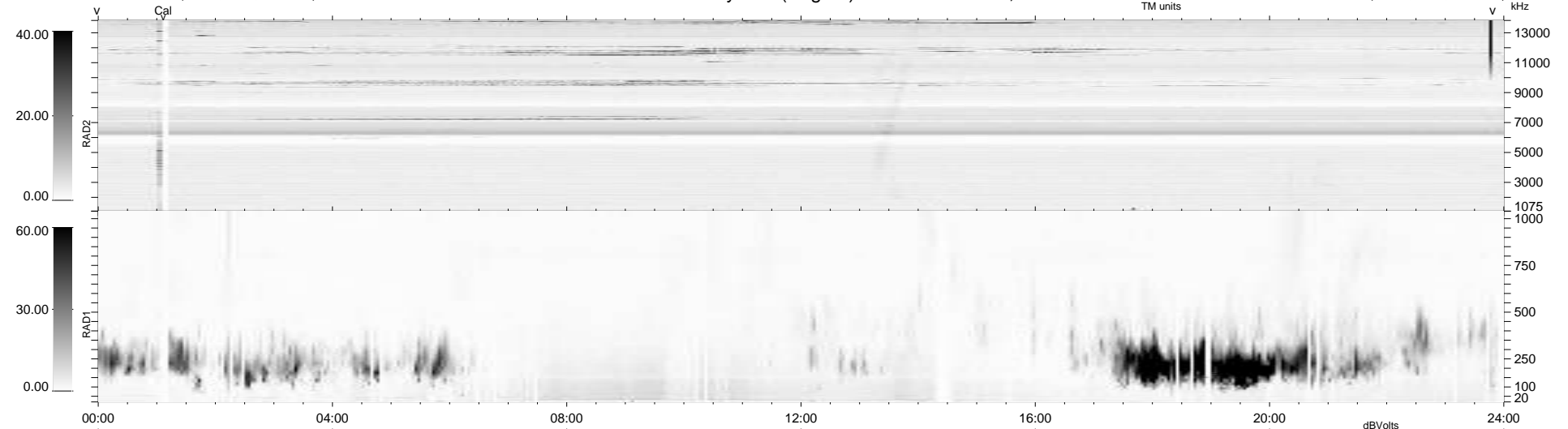
328 bad + 610 good MF/939MF projected (64%) - 1 missing MF  
 Avg interval = 180 secs  
 Re = 263.75 (258.19, 53.64, 4.89 GSE)

windlib 2.0b

LZ version = v01

### WIND/WAVES Summary Plot (Page 1) for 16-AUG-2018, DOY = 228

DAILY 2018-08-17 22:20:04  
 Re = 263.75 (258.77, 50.73, 5.17 GSE)



RAD2  
 Antenna Ey .....  
 Mode LIN(1) .....  
 SUM/SEP SEP .....  
 Toggle OFF .....  
 RAD1  
 Antenna Ex .....  
 Mode LIS(2/4) .....  
 SUM/SEP SUM .....  
 Toggle OFF .....  
 TNR  
 Antenna ExEy .....  
 Mode A-32 .....  
 Sweep ACE .....