

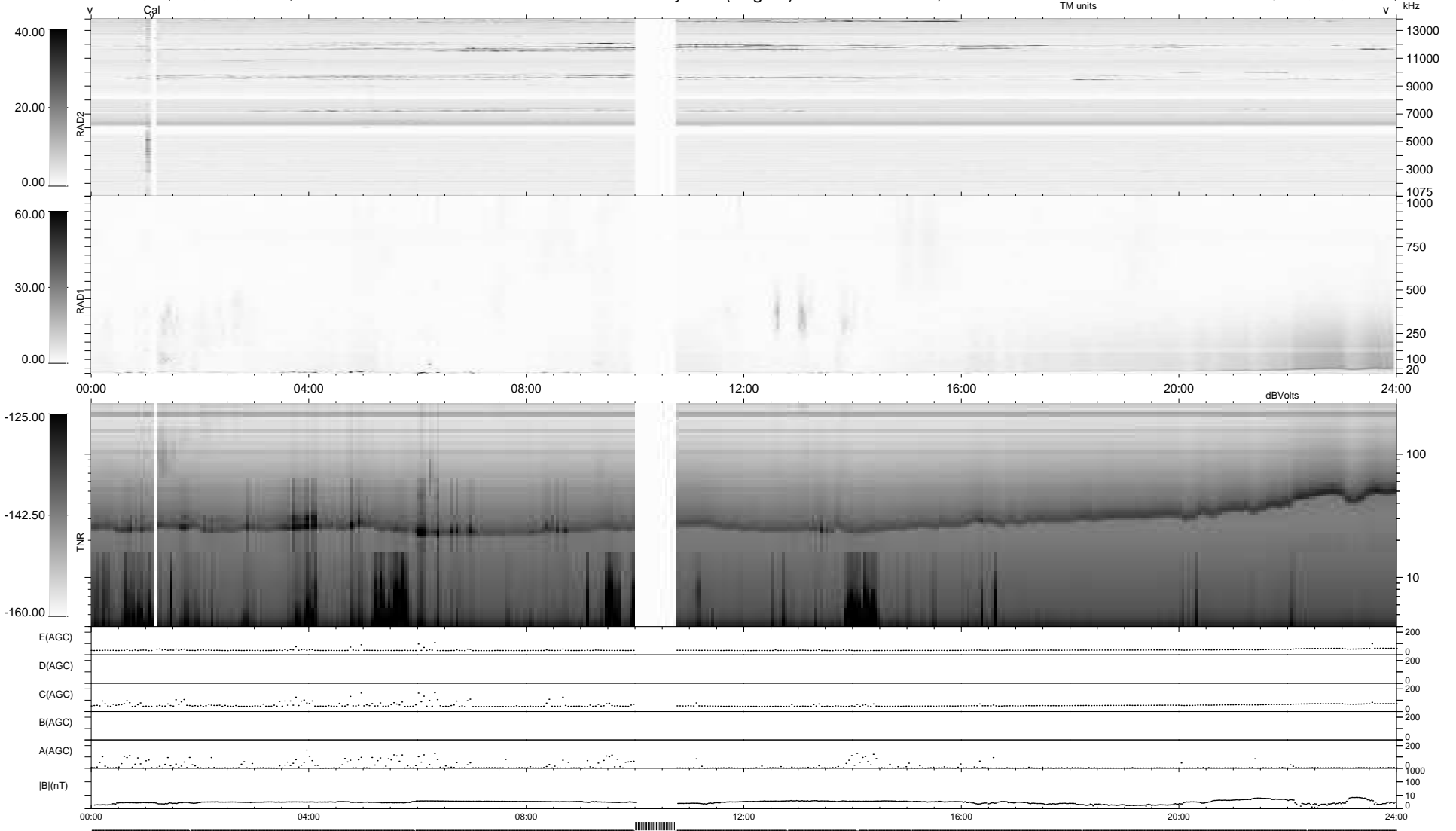
11 bad + 899 good MF/939MF projected (95%) - 29 missing MFs
 Avg interval = 180 secs
 Re = 263.62 (256.84, 59.23, 4.30 GSE)

windlib 2.0b

LZ version = v02

WIND/WAVES Summary Plot (Page 1) for 14-AUG-2018, DOY = 226

DAILY 2018-08-17 10:20:12
 Re = 263.71 (257.54, 56.50, 4.60 GSE)



```

RAD2
Antenna Ey .....
Mode LIN(1) .....
SUM/SEP SEP .....
Toggle OFF .....

RAD1
Antenna Ex .....
Mode LIS(2,4) .....
SUM/SEP SUM .....
Toggle OFF .....

TNR
Antenna ExEy .....
Mode A-32 .....
Sweep ACE .....
  
```