

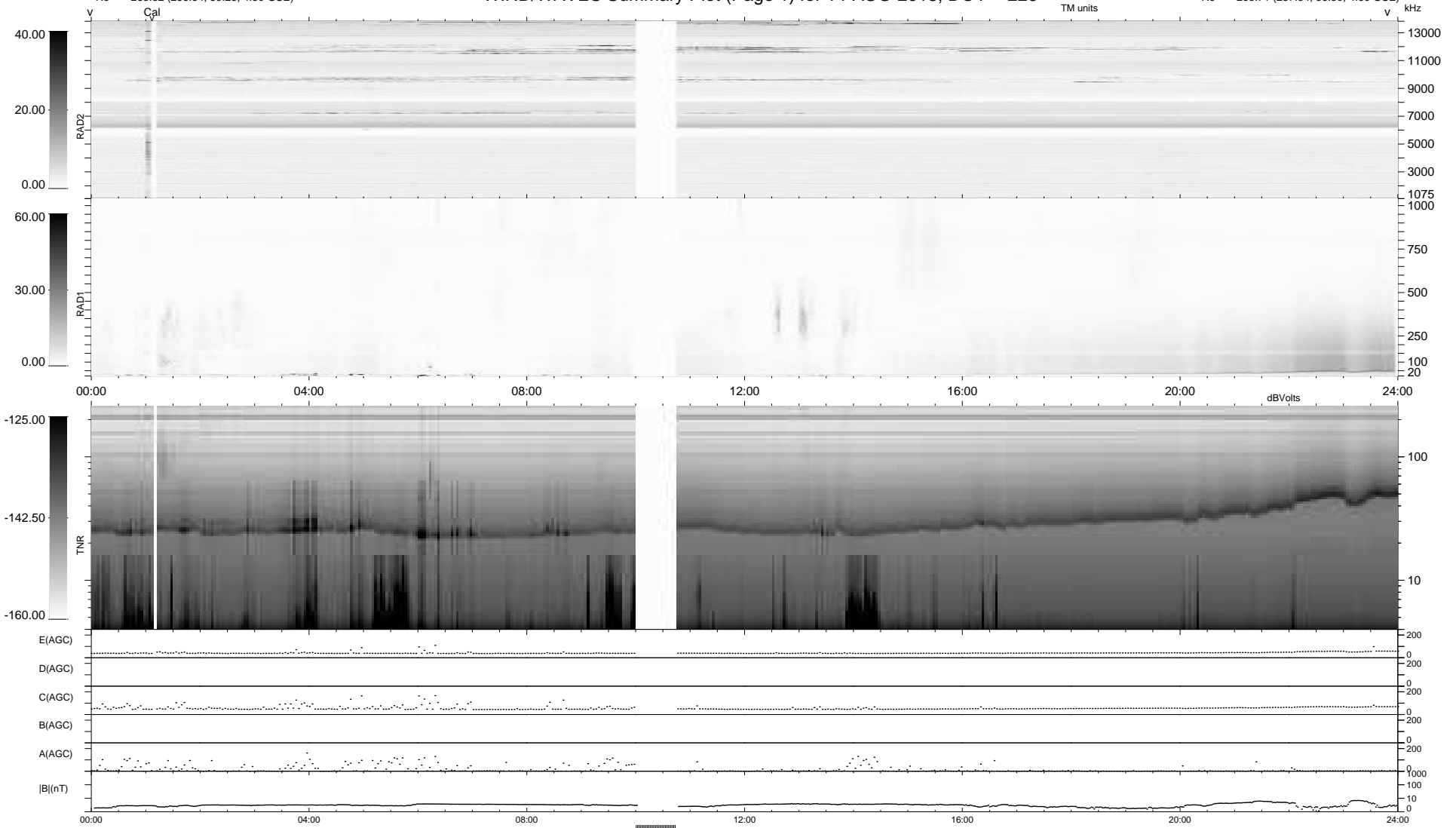
11 bad + 899 good MF/939MF projected (95%) - 29 missing MFs  
 Avg interval = 180 secs  
 Re = 263.62 (256.84, 59.23, 4.30 GSE)

windlib 2.0b

LZ version = v01

### WIND/WAVES Summary Plot (Page 1) for 14-AUG-2018, DOY = 226

DAILY 2018-08-16 04:20:05  
 Re = 263.71 (257.54, 56.50, 4.60 GSE)



RAD2  
 Antenna Ey .....  
 Mode LIN(1) .....  
 SUM/SEP SEP .....  
 Toggle OFF .....  
 RAD1  
 Antenna Ex .....  
 Mode LIS(2,4) .....  
 SUM/SEP SUM .....  
 Toggle OFF .....  
 TNR  
 Antenna ExEy .....  
 Mode A-32 .....  
 Sweep ACE .....