

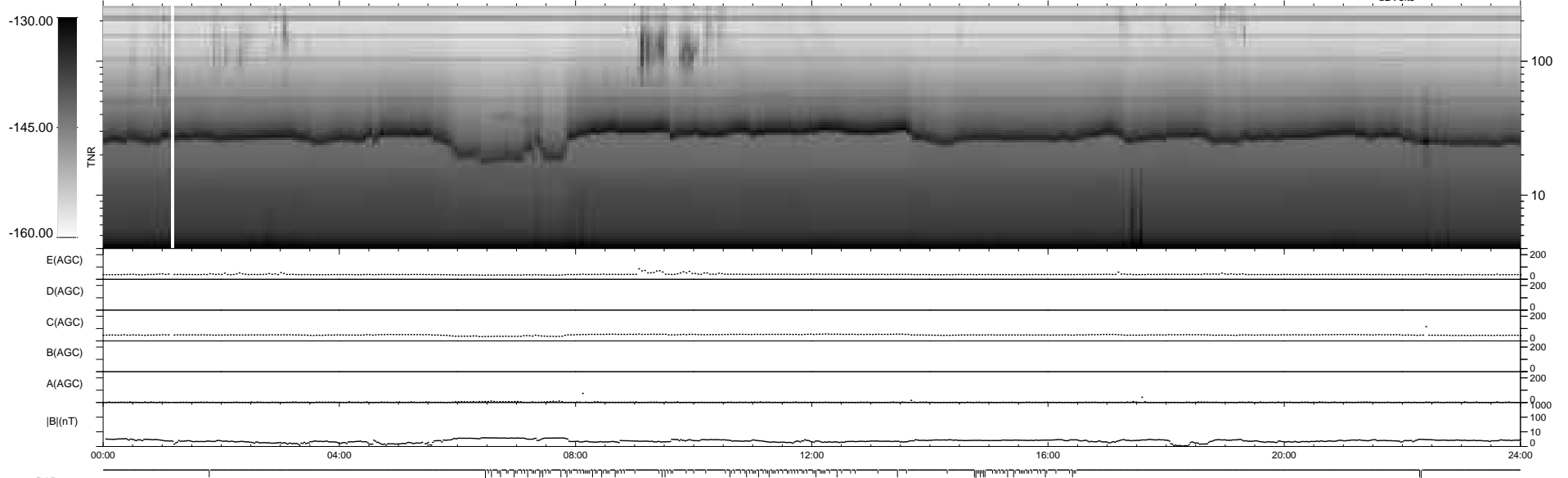
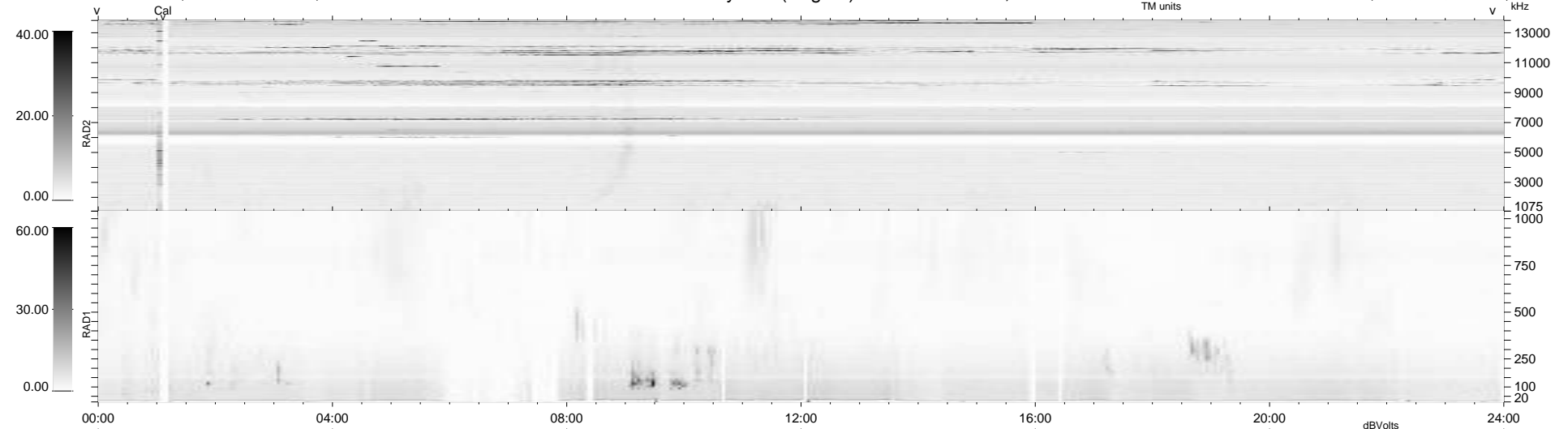
139 bad + 800 good MF/939MF projected (85%) - 0 missing MFs
 Avg interval = 180 secs
 Re = - 203.98 (202.20, 25.38, -8.85 GSE)

windlib 2.0b

LZ version = v01

WIND/WAVES Summary Plot (Page 1) for 09-JUN-2018, DOY = 160

DAILY 2018-07-16 11:22:01
 Re = 204.72 (202.45, 29.05, -8.97 GSE)



```

RAD2
Antenna Ey .....
Mode LIN(1) .....
SUM/SEP SEP .....
Toggle OFF .....

RAD1
Antenna Ex .....
Mode LIS(2,4) .....
SUM/SEP SUM .....
Toggle OFF .....

TNR
Antenna ExEy .....
Mode A-32 .....
Sweep ACE .....
  
```