

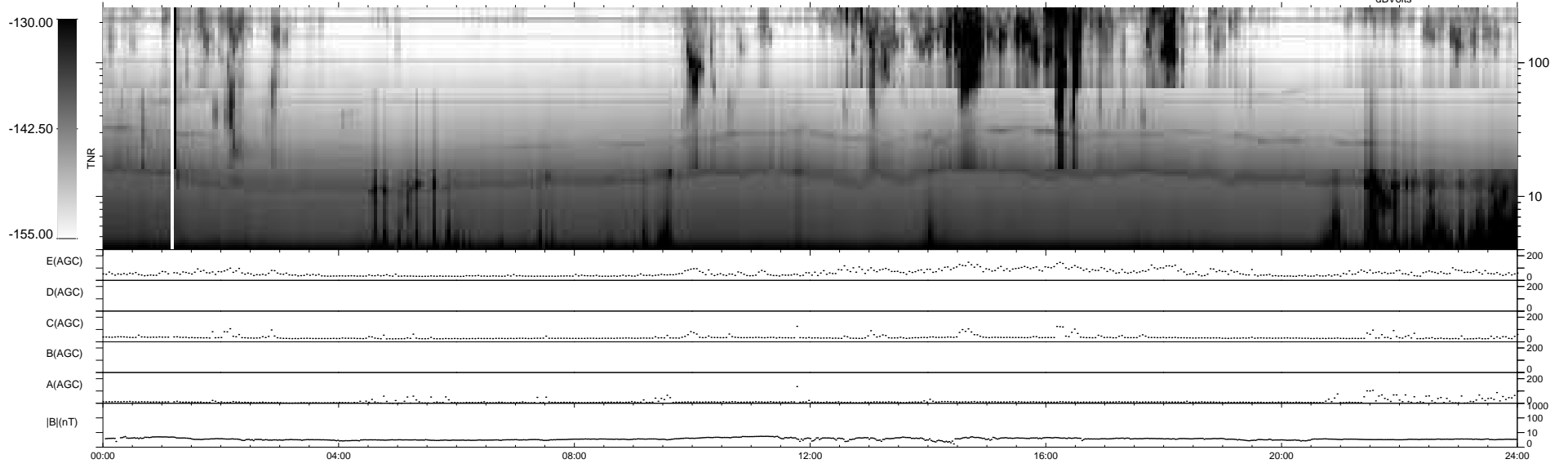
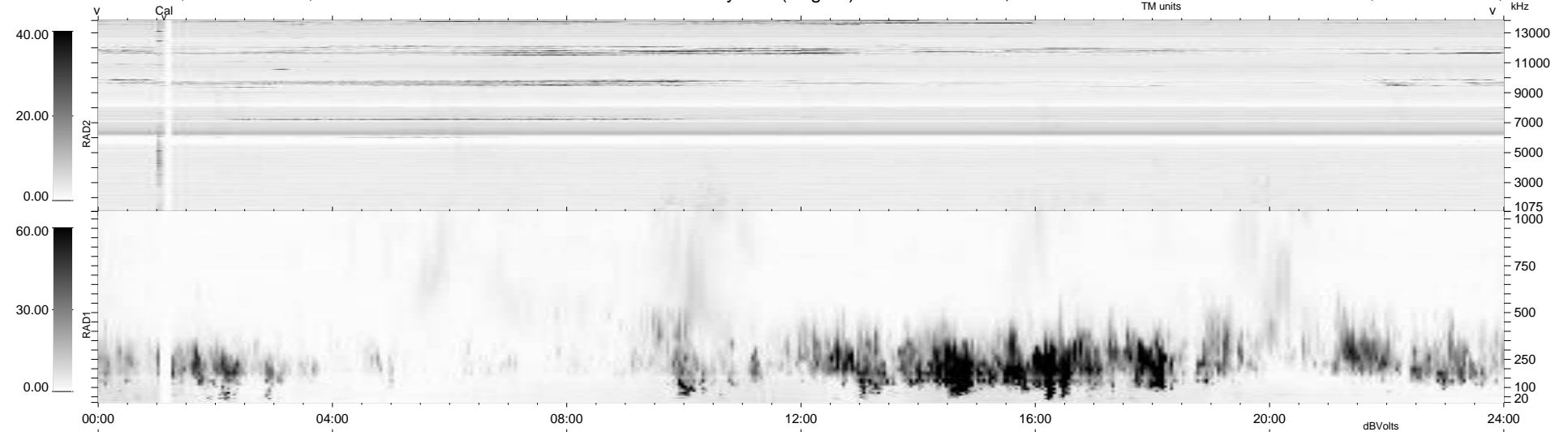
5 bad + 935 good MF/940MF projected (99%) - 0 missing MFs
 Avg interval = 180 secs
 Re = -201.07 (200.89, 3.21, -7.77 GSE)

windlib 2.0b

LZ version = v01

WIND/WAVES Summary Plot (Page 1) for 03-JUN-2018, DOY = 154

DAILY 2018-07-03 17:27:25
 Re = 201.33 (201.05, 6.86, -7.99 GSE)



RAD2
 Antenna Ey
 Mode LIN(1)
 SUM/SEP SEP
 Toggle OFF
 RAD1
 Antenna Ex
 Mode LIS(2,4)
 SUM/SEP SUM
 Toggle OFF
 TNR
 Antenna ExEy
 Mode A-32
 Sweep ACE