

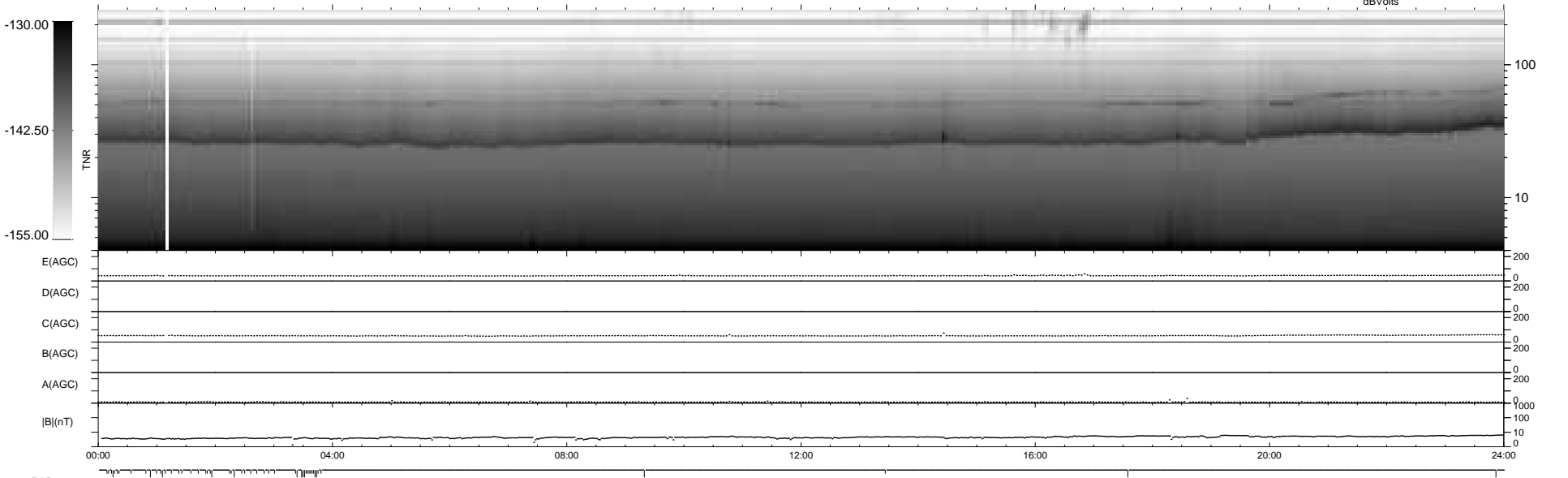
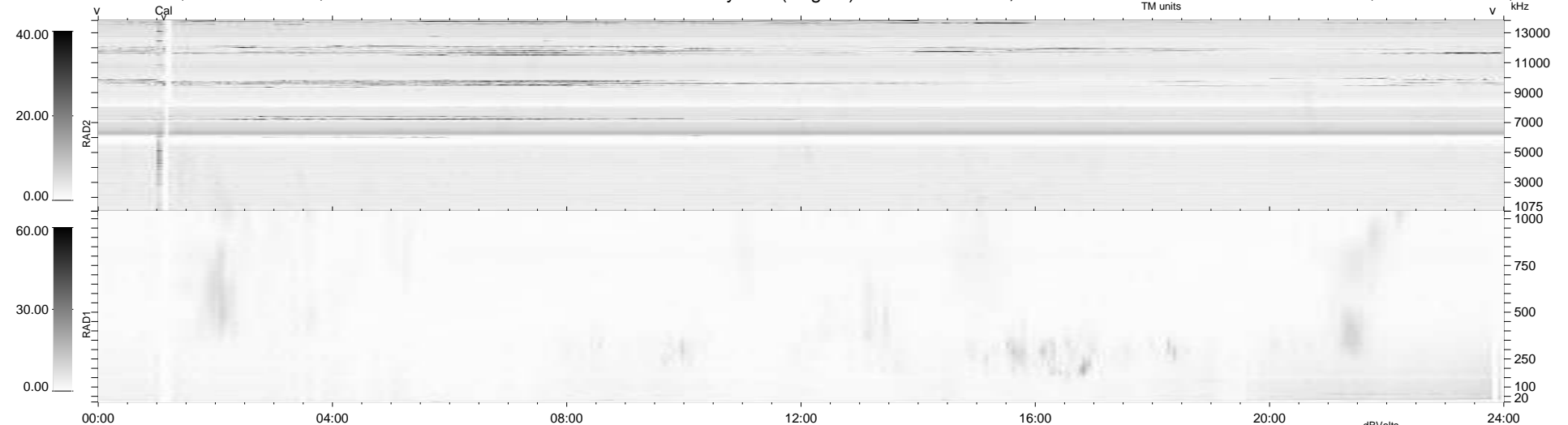
52 bad + 887 good MF/939MF projected (94%) - 0 missing MFs
 Avg interval = 180 secs
 Re = 201.61 (200.67, -18.42, -6.23 GSE)

windlib 2.0b

LZ version = v01

WIND/WAVES Summary Plot (Page 1) for 28-MAY-2018, DOY = 148

DAILY 2018-07-03 17:23:50
 Re = 201.26 (200.60, -14.89, -6.50 GSE)



```

RAD2
Antenna Ey .....
Mode LIN(1) .....
SUM/SEP SEP .....
Toggle OFF .....

RAD1
Antenna Ex .....
Mode LIS(2,4) .....
SUM/SEP SUM .....
Toggle OFF .....

TNR
Antenna ExEy .....
Mode A-32 .....
Sweep ACE .....
  
```