

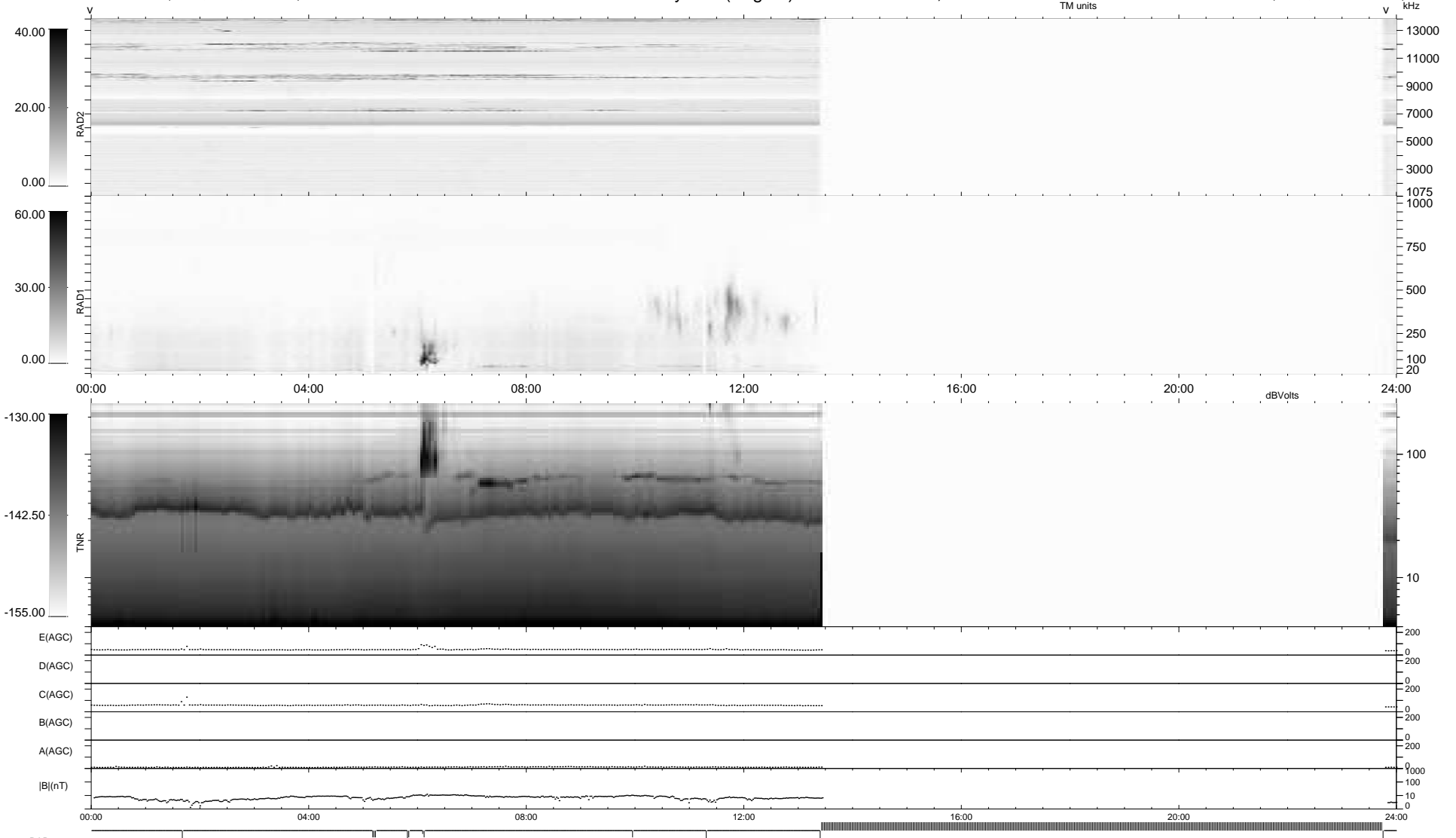
12 bad + 523 good MF/939MF projected (55%) - 404 missing MFs  
 Avg interval = 180 secs  
 Re = - 204.82 (201.59, -35.93, -4.72 GSE)

windlib 2.0b

LZ version = v01

### WIND/WAVES Summary Plot (Page 1) for 23-MAY-2018, DOY = 143

DAILY 2018-05-24 22:20:05  
 Re = 204.00 (201.34, -32.49, -5.03 GSE)



```

RAD2
Antenna Ey .....
Mode LIN(1) .....
SUM/SEP SEP .....
Toggle OFF .....

RAD1
Antenna Ex .....
Mode LIS(2,4) .....
SUM/SEP SUM .....
Toggle OFF .....

TNR
Antenna ExEy .....
Mode A-32 .....
Sweep ACE .....
  
```