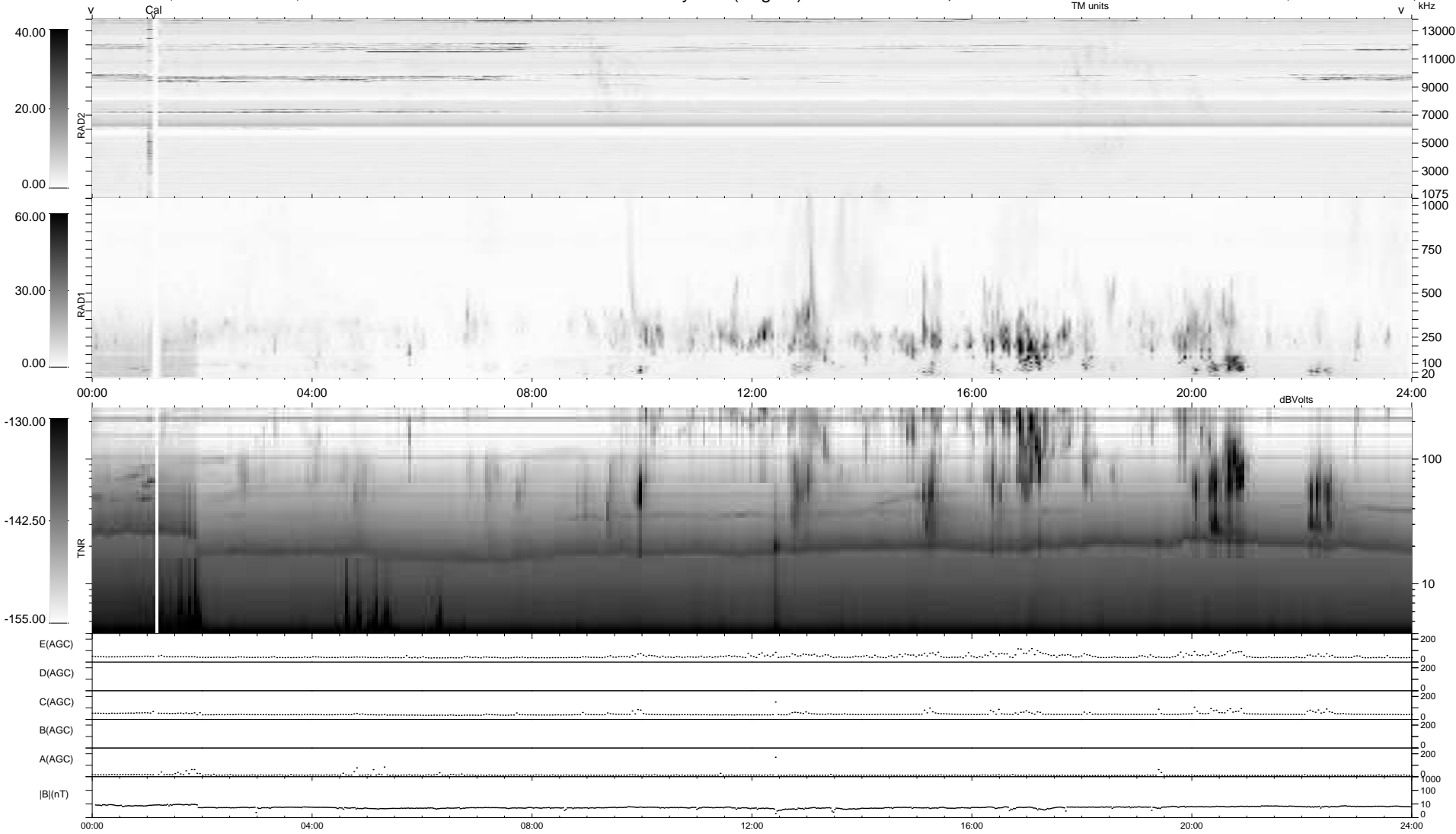


6 bad + 933 good MF/939MF projected (99%) - 0 missing MFs
 Avg interval = 180 secs
 Re = 223.85 (206.97, -85.26, 1.48 GSE)

windlib 2.0b LZ version = v01
 DAILY 2018-07-03 16:21:53
 Re = 222.70 (206.55, -83.26, 1.09 GSE)

WIND/WAVES Summary Plot (Page 1) for 06-MAY-2018, DOY = 126



RAD2
 Antenna Ey
 Mode LIN(1)
 SUM/SEP SEP
 Toggle OFF

RAD1
 Antenna Ex
 Mode LIS(2,4)
 SUM/SEP SUM
 Toggle OFF

TNR
 Antenna ExEy
 Mode A-32
 Sweep ACE