

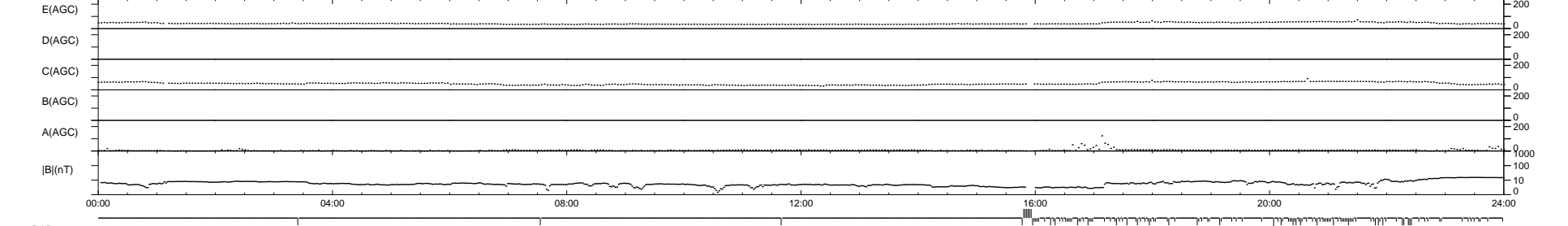
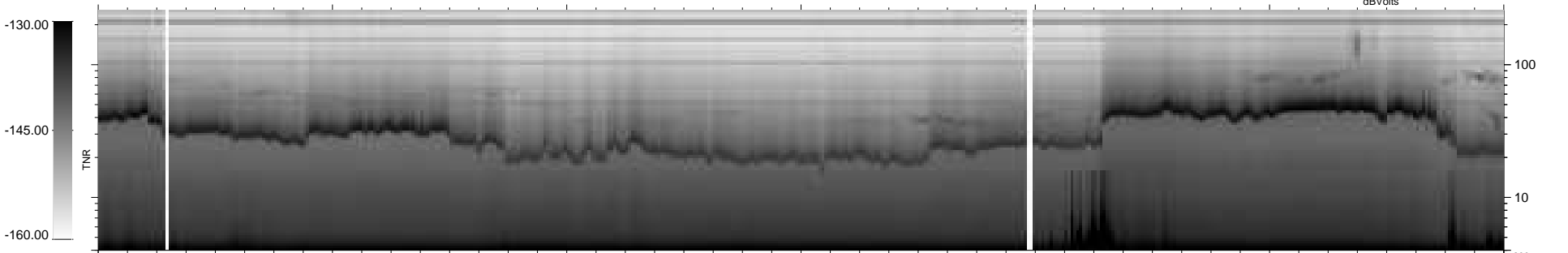
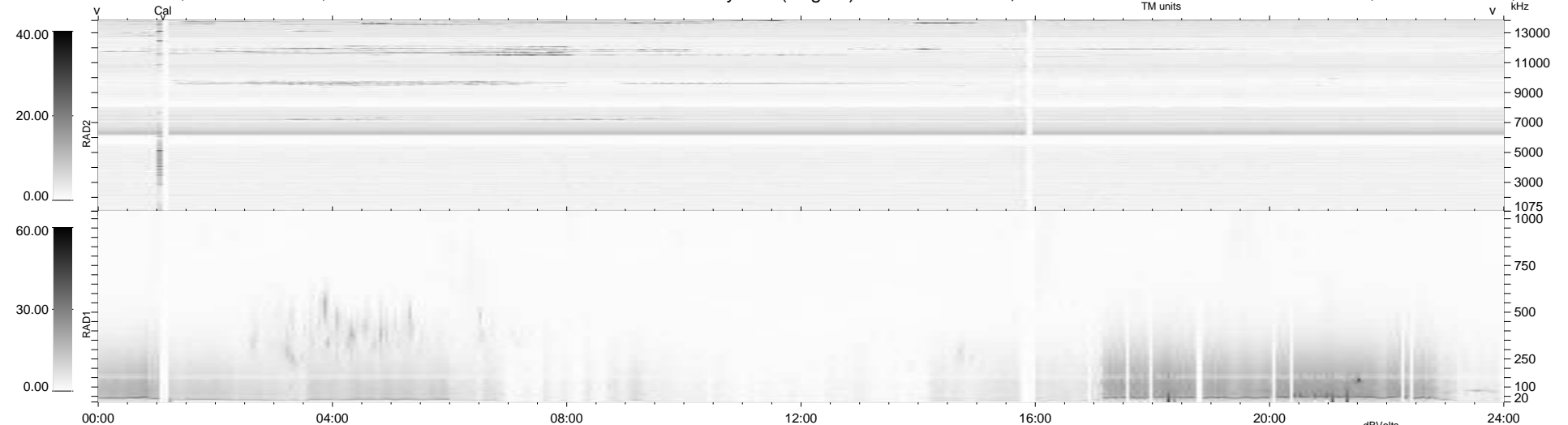
120 bad + 813 good MF/939MF projected (86%) - 6 missing MFs
 Avg interval = 180 secs
 Re = -259.78 (259.05, -16.46, 10.56 GSE)

windlib 2.0b

LZ version = v01

WIND/WAVES Summary Plot (Page 1) for 09-MAR-2018, DOY = 68

DAILY 2018-03-10 08:20:05
 Re = 259.96 (258.98, -19.91, 10.68 GSE)



```

RAD2
Antenna Ey .....
Mode LIN(1) .....
SUM/SEP SEP .....
Toggle OFF .....

RAD1
Antenna Ex .....
Mode LIS(2,4) .....
SUM/SEP SUM .....
Toggle OFF .....

TNR
Antenna ExEy .....
Mode A-32 .....
Sweep ACE .....
  
```