

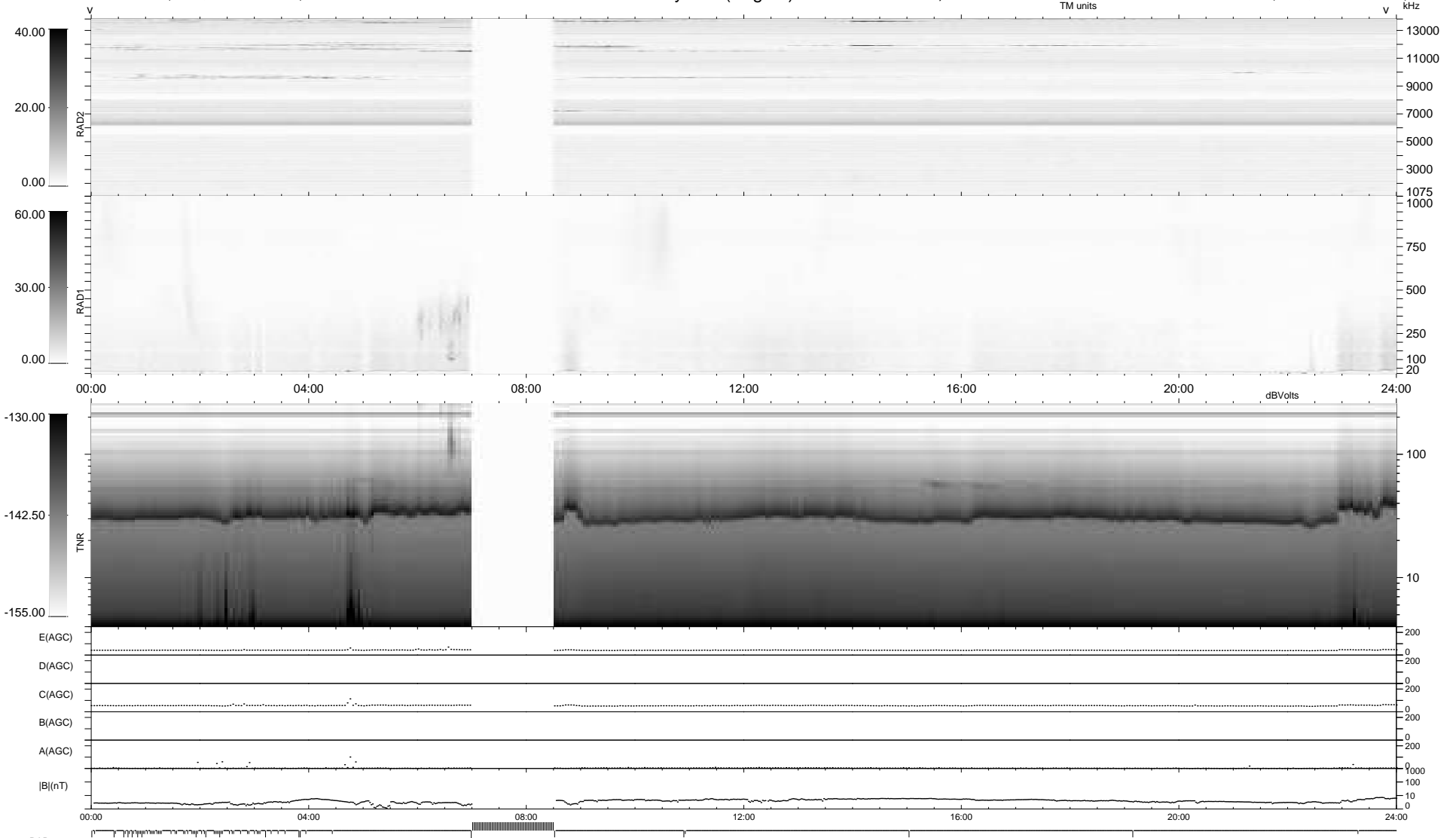
72 bad + 808 good MF/939MF projected (86%) - 59 missing MFs  
Avg interval = 180 secs  
Re = -259.60 (259.07, -12.94, 10.42 GSE)

windlib 2.0b

LZ version = v01

### WIND/WAVES Summary Plot (Page 1) for 08-MAR-2018, DOY = 67

DAILY 2018-03-10 04:20:05  
Re = 259.78 (259.05, -16.44, 10.56 GSE)



RAD2  
Antenna Ey  
Mode LIN(1)  
SUM/SEP SEP  
Toggle OFF

RAD1  
Antenna Ex  
Mode LIS(2,4)  
SUM/SEP SUM  
Toggle OFF

TNR  
Antenna ExEy  
Mode A-32  
Sweep ACE