

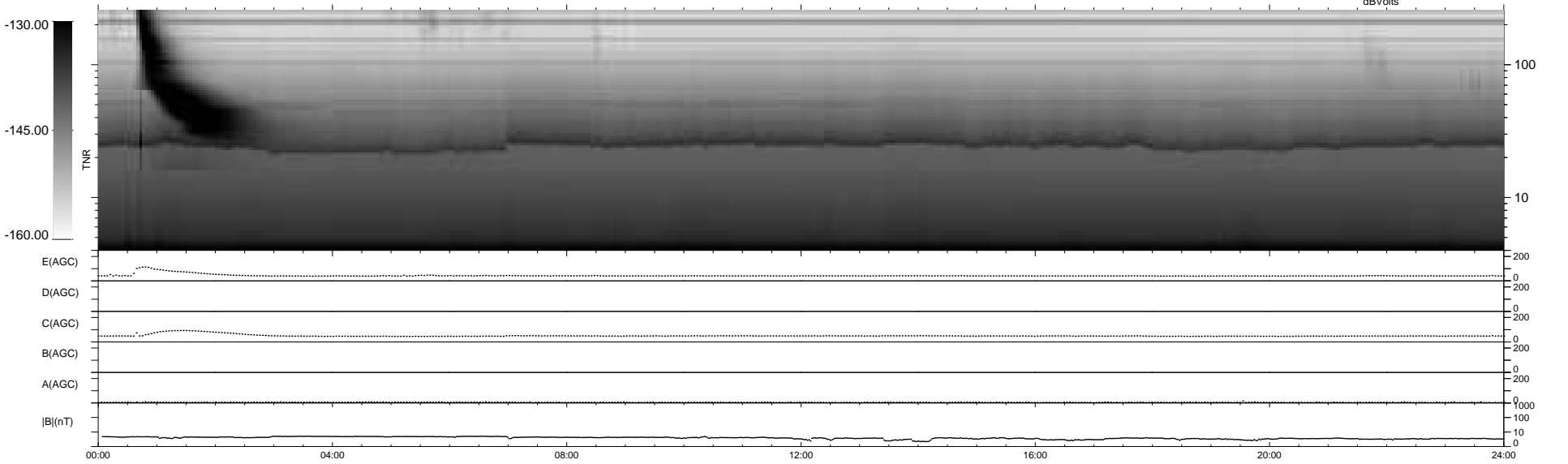
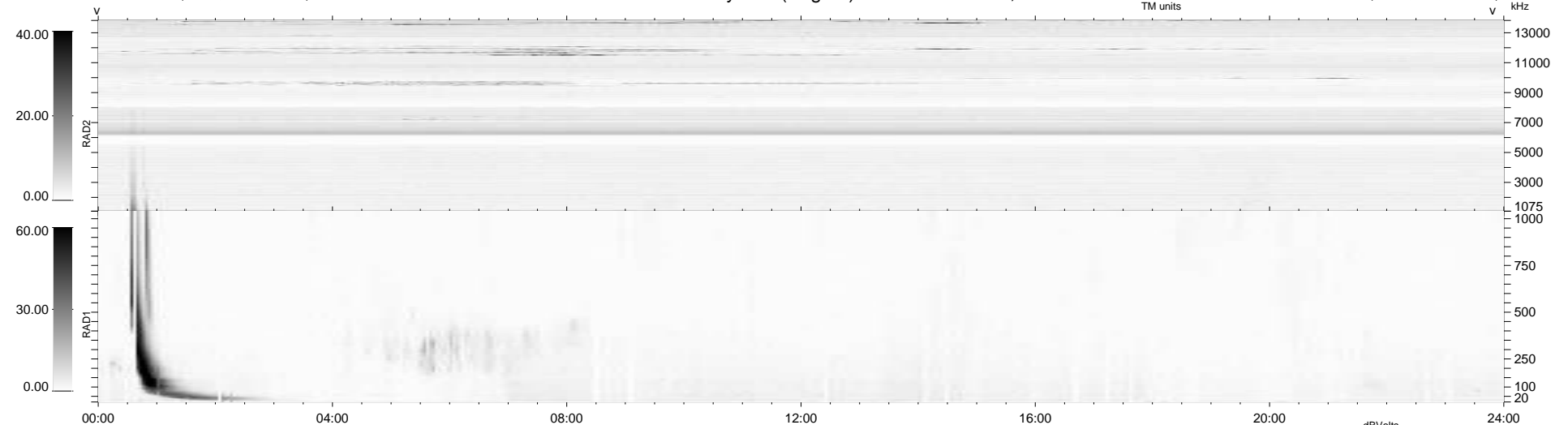
348 bad + 591 good MF/939MF projected (62%) - 0 missing MFs
 Avg interval = 180 secs
 Re = 258.71 (258.39, 8.90, 9.30 GSE)

windlib 2.0b

LZ version = v01

WIND/WAVES Summary Plot (Page 1) for 02-MAR-2018, DOY = 61

DAILY 2018-03-03 21:20:13
 Re = 258.80 (258.57, 5.25, 9.52 GSE)



```

RAD2
Antenna Ey .....
Mode LIN(1) .....
SUM/SEP SEP .....
Toggle OFF .....

RAD1
Antenna Ex .....
Mode LIS(2,4) .....
SUM/SEP SUM .....
Toggle OFF .....

TNR
Antenna ExEy .....
Mode A-32 .....
Sweep ACE .....
  
```