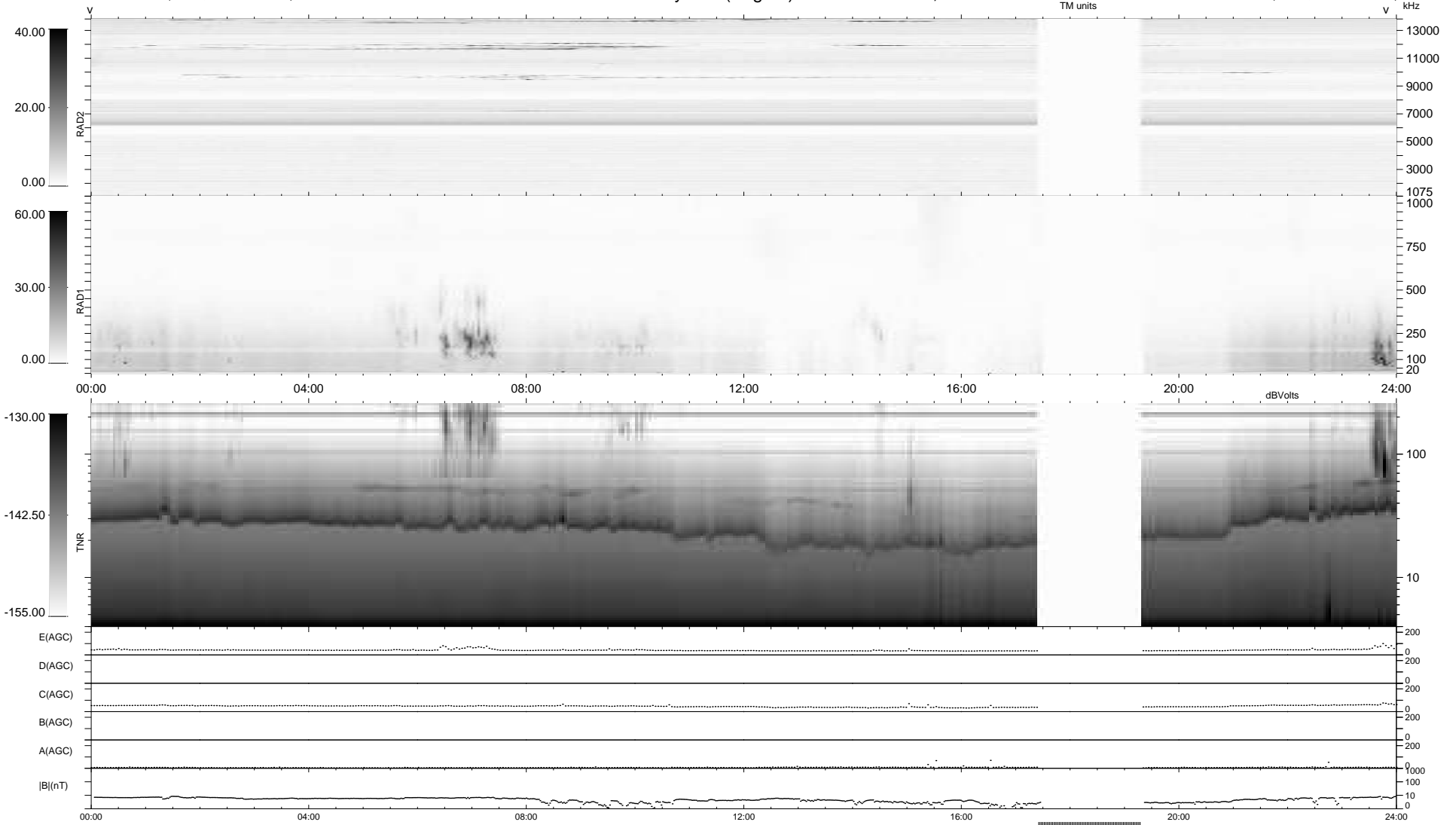


8 bad + 857 good MF/939MF projected (91%) - 74 missing MFs
 Avg interval = 180 secs
 Re = 258.63 (257.44, 23.37, 8.34 GSE)

windlib 2.0b LZ version = v01
 DAILY 2018-02-27 18:20:13
 Re = 258.62 (257.71, 19.84, 8.59 GSE)

WIND/WAVES Summary Plot (Page 1) for 26-FEB-2018, DOY = 57



```

RAD2
Antenna Ey .....
Mode LIN(1) .....
SUM/SEP SEP .....
Toggle OFF .....

RAD1
Antenna Ex .....
Mode LIS(2,4) .....
SUM/SEP SUM .....
Toggle OFF .....

TNR
Antenna ExEy .....
Mode A-32 .....
Sweep ACE .....
  
```