

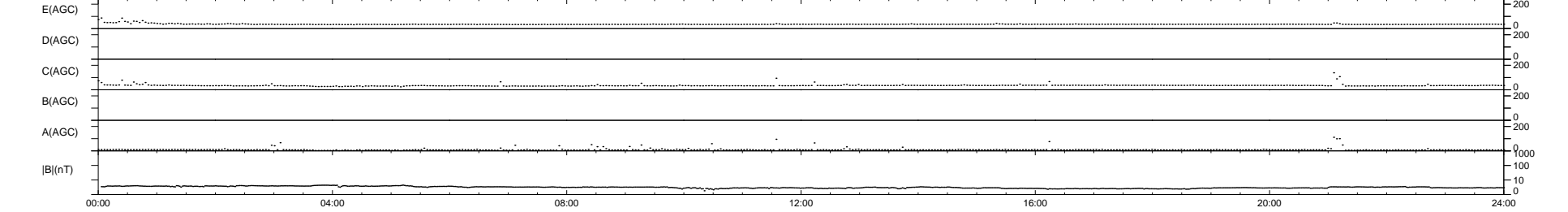
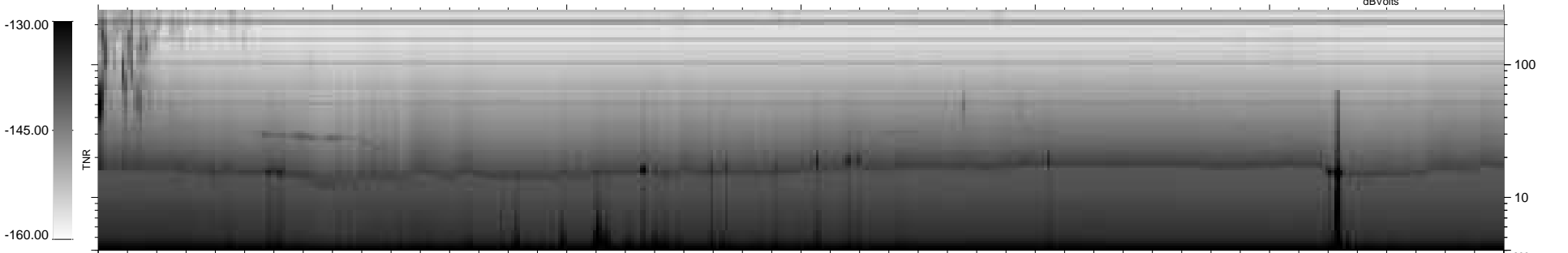
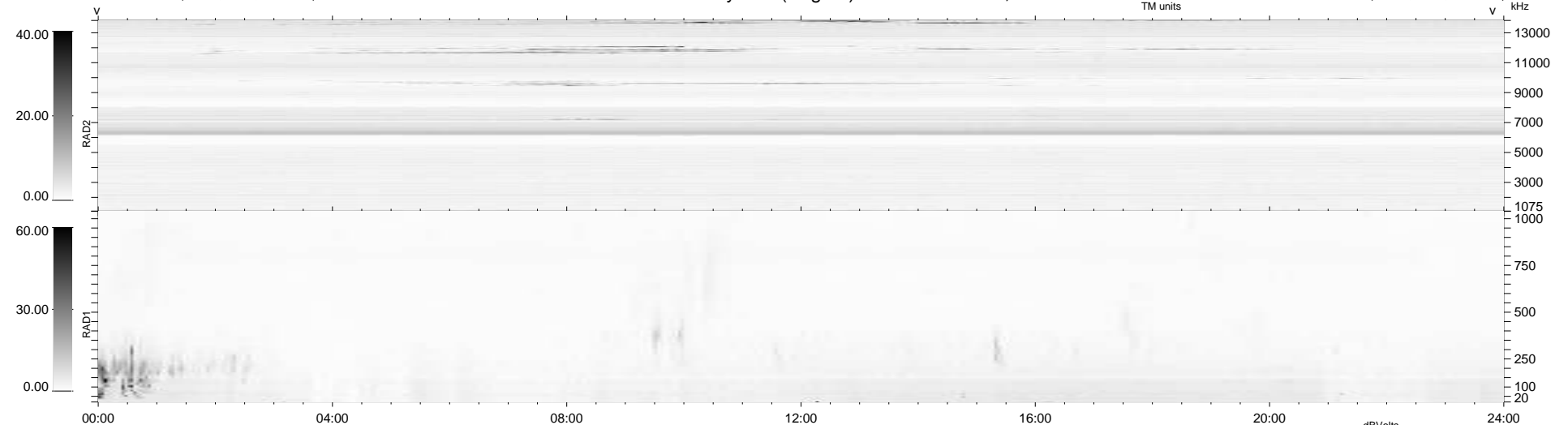
5 bad + 934 good MF/939MF projected (99%) - 0 missing MFs
Avg interval = 180 secs
Re = 258.61 (254.87, 43.30, 6.72 GSE)

windlib 2.0b

LZ version = v01

WIND/WAVES Summary Plot (Page 1) for 20-FEB-2018, DOY = 51

DAILY 2018-03-05 15:20:13
Re = 258.68 (255.44, 40.19, 6.99 GSE)



RAD2
Antenna Ey
Mode LIN(1)
SUM/SEP SEP
Toggle OFF

RAD1
Antenna Ex
Mode LIS(2,4)
SUM/SEP SUM
Toggle OFF

TNR
Antenna ExEy
Mode A-32
Sweep ACE