

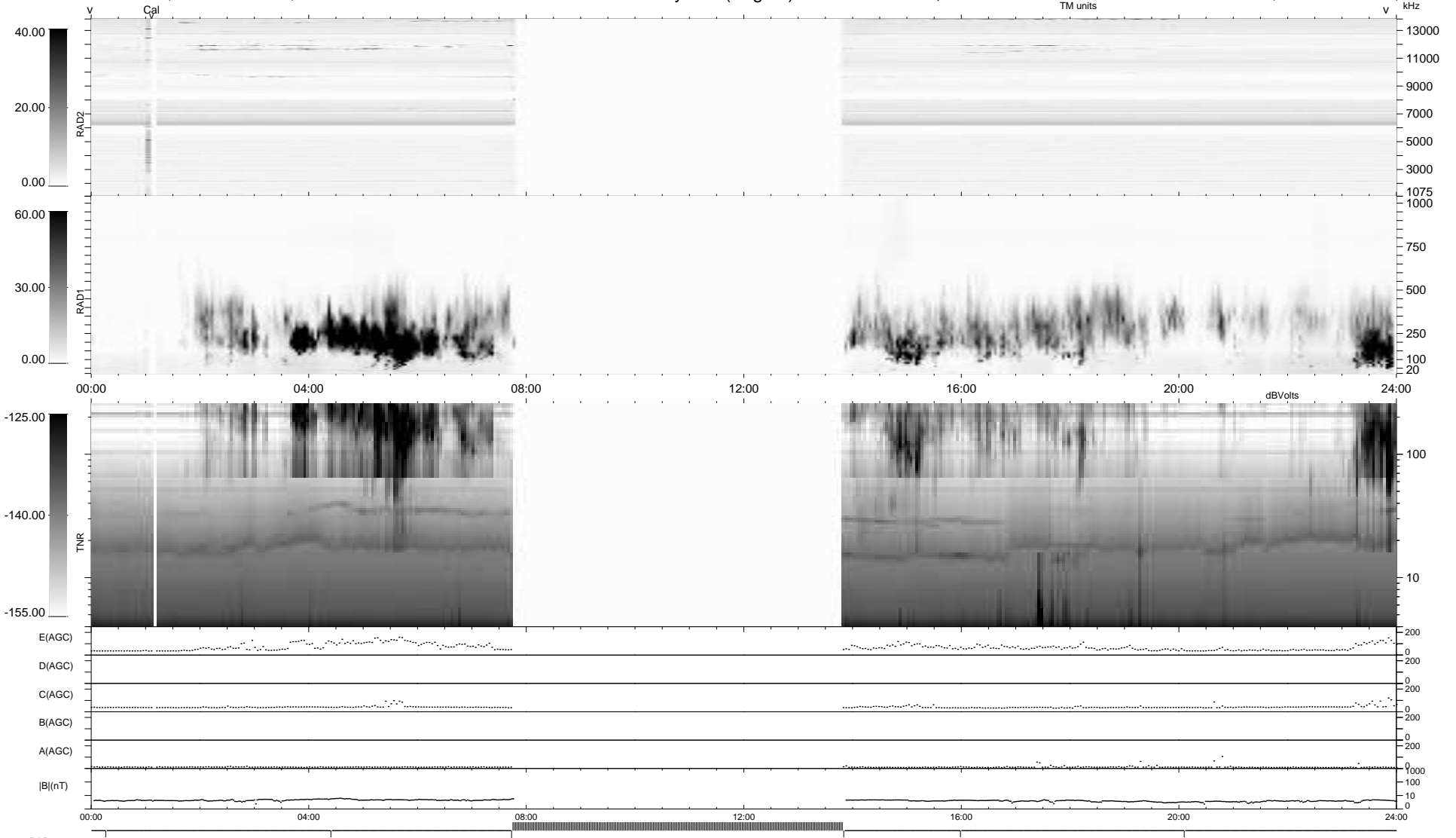
6 bad + 695 good MF/939MF projected (74%) - 238 missing MFs
 Avg interval = 180 secs
 Re = 194.71 (194.42, -7.09, -8.00 GSE)

windlib 2.0b

LZ version = v01

WIND/WAVES Summary Plot (Page 1) for 06-DEC-2017, DOY = 340

DAILY 2017-12-07 20:52:06
 Re = 194.67 (194.47, -3.39, -8.23 GSE)



RAD2
 Antenna Ey
 Mode LIN(1)
 SUM/SEP SEP
 Toggle OFF
 RAD1
 Antenna Ex
 Mode LIS(2,4)
 SUM/SEP SUM
 Toggle OFF
 TNR
 Antenna ExEy
 Mode A-32
 Sweep ACE