

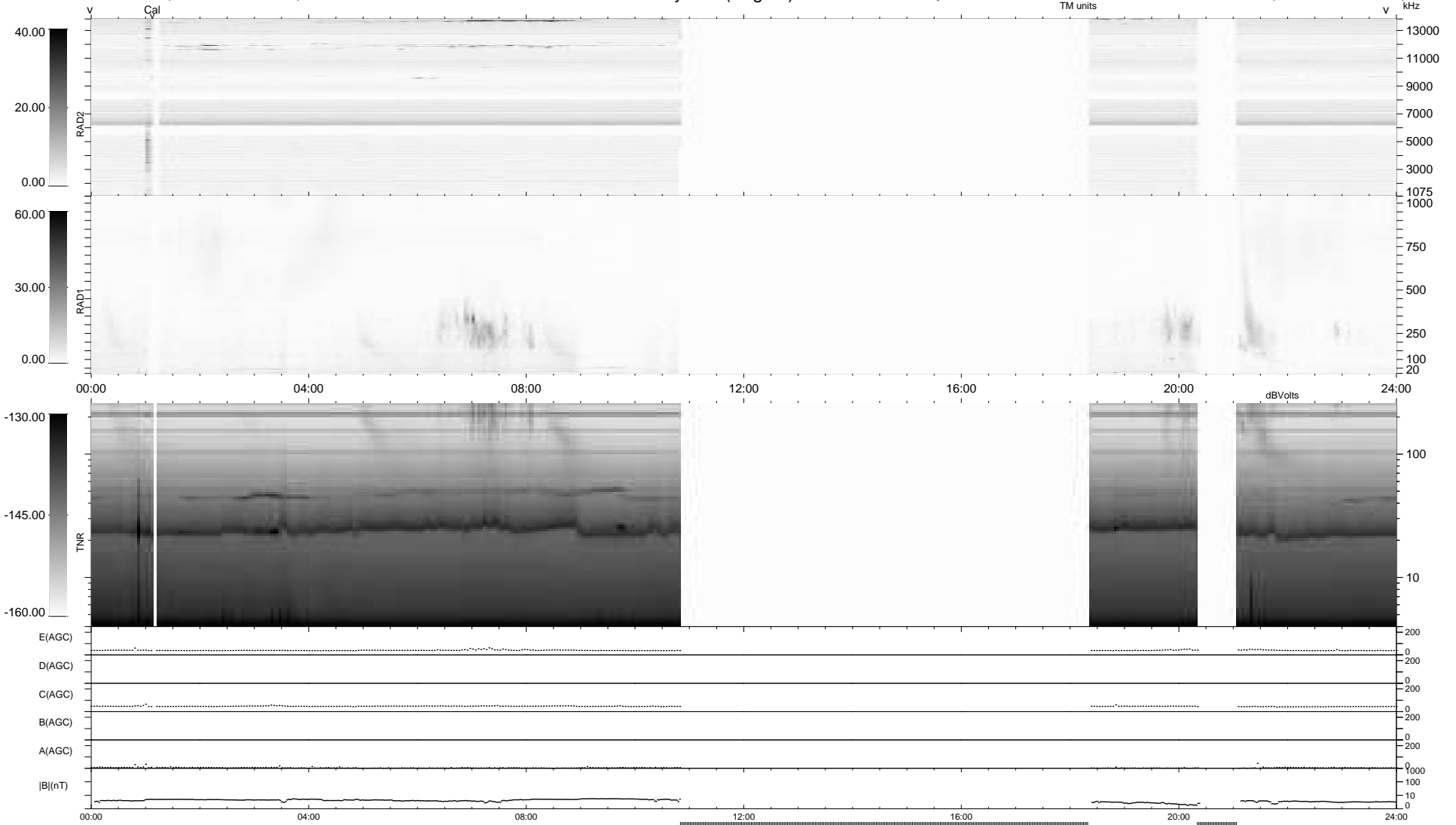
7 bad + 609 good MF/939MF projected (64%) - 323 missing MFs  
 Avg interval = 180 secs  
 Re = 196.05 (194.73, -21.69, -6.91 GSE)

windlib 2.0b

LZ version = v01

### WIND/WAVES Summary Plot (Page 1) for 02-DEC-2017, DOY = 336

DAILY 2017-12-03 08:52:06  
 Re = 195.54 (194.57, -18.10, -7.20 GSE)



RAD2 Antenna Ey .....  
 Mode LIN(1) .....  
 SUM/SEP SEP .....  
 Toggle OFF .....  
 RAD1 Antenna Ex .....  
 Mode LIS(2,4) .....  
 SUM/SEP SUM .....  
 Toggle OFF .....  
 TNR Antenna ExEy .....  
 Mode A-32 .....  
 Sweep ACE .....