

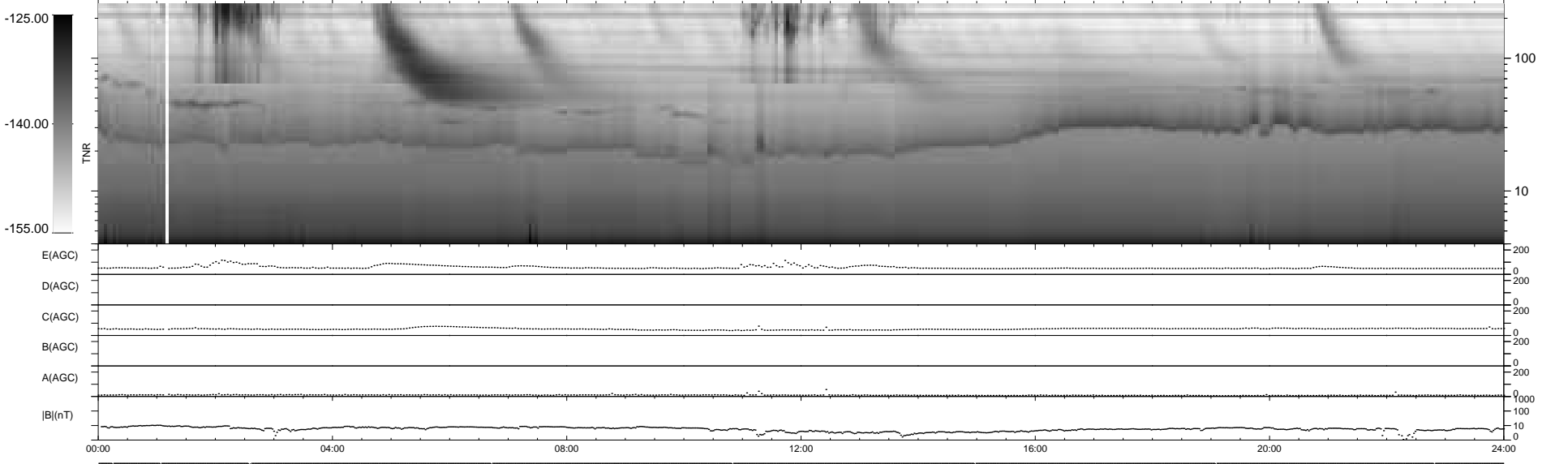
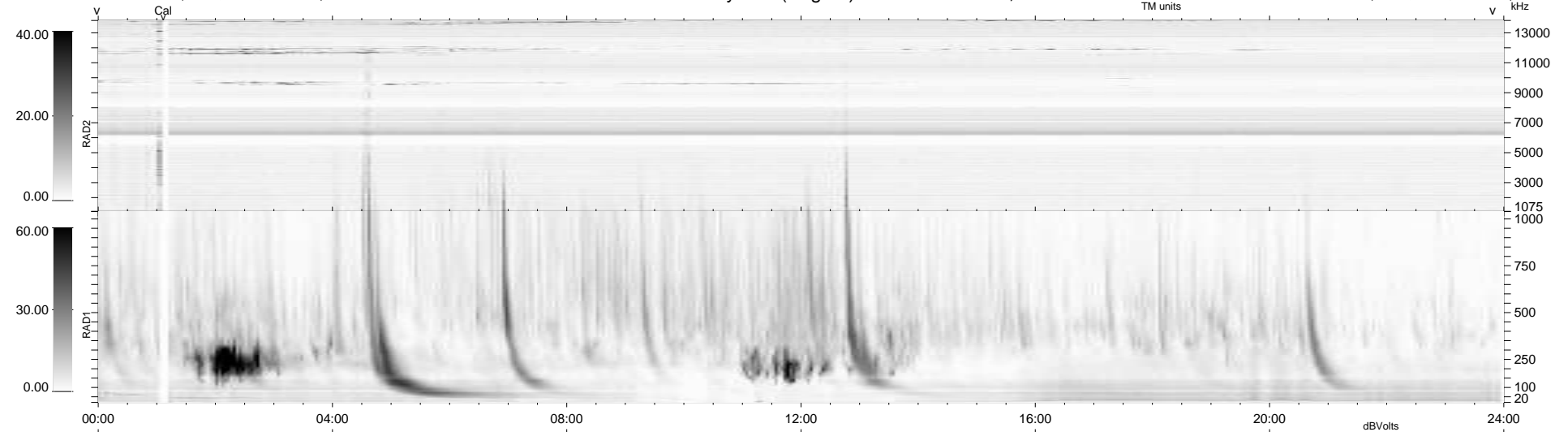
9 bad + 930 good MF/939MF projected (99%) - 0 missing MFs
Avg interval = 180 secs
Re = 199.16 (195.82, -35.91, -5.55 GSE)

windlib 2.0b

LZ version = v01

WIND/WAVES Summary Plot (Page 1) for 28-NOV-2017, DOY = 332

DAILY 2017-11-29 21:52:07
Re = 198.25 (195.49, -32.41, -5.91 GSE)



RAD2
Antenna Ey
Mode LIN(1)
SUM/SEP SEP
Toggle OFF
RAD1
Antenna Ex
Mode LIS(2/4)
SUM/SEP SUM
Toggle OFF
TNR
Antenna ExEy
Mode A-32
Sweep ACE