

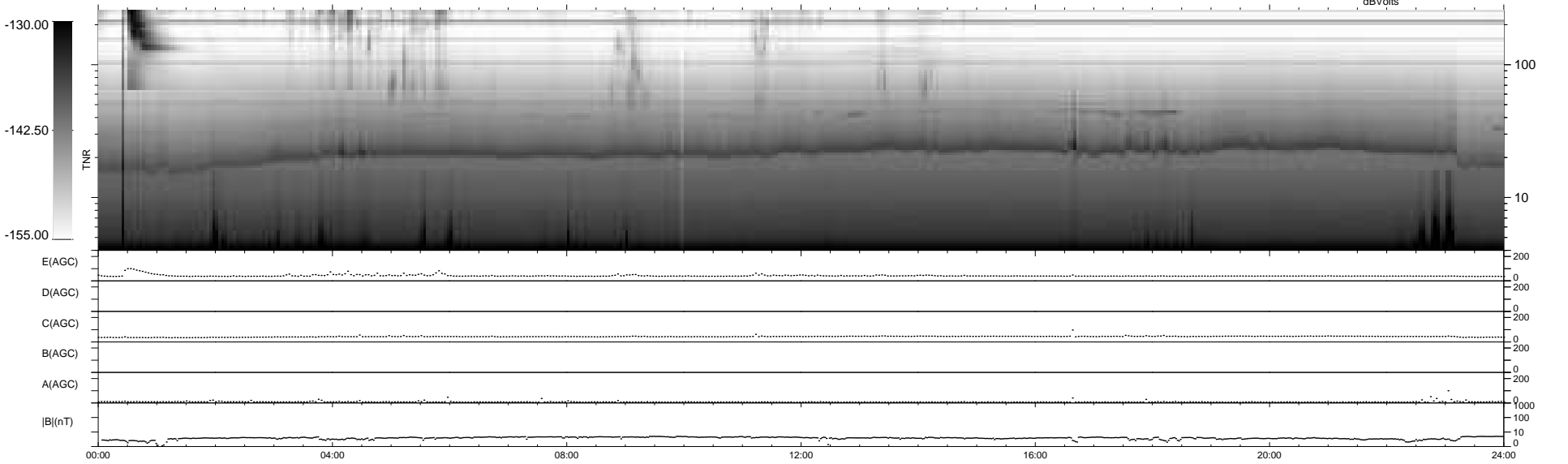
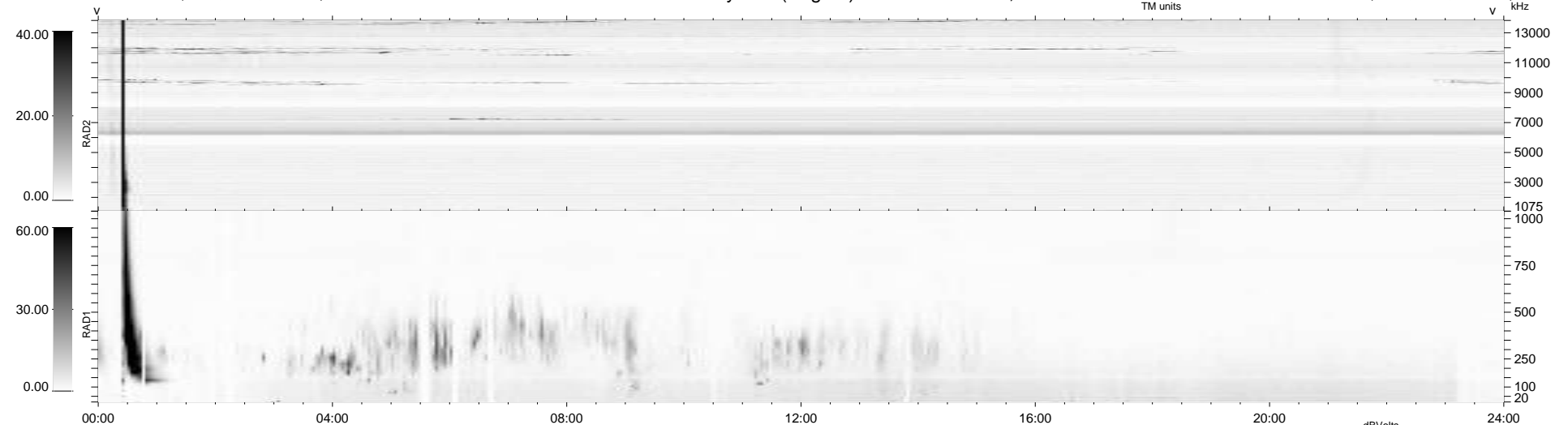
229 bad + 710 good MF/939MF projected (75%) - 0 missing MFs  
 Avg interval = 180 secs  
 Re = 212.93 (200.62, -71.33, -1.14 GSE)

windlib 2.0b

LZ version = v01

### WIND/WAVES Summary Plot (Page 1) for 17-NOV-2017, DOY = 321

DAILY 2017-11-18 16:52:10  
 Re = 211.56 (200.15, -68.52, -1.55 GSE)



RAD2  
 Antenna Ey  
 Mode LIN(1)  
 SUM/SEP SEP  
 Toggle OFF

RAD1  
 Antenna Ex  
 Mode LIS(2,4)  
 SUM/SEP SUM  
 Toggle OFF

TNR  
 Antenna ExEy  
 Mode A-32  
 Sweep ACE