

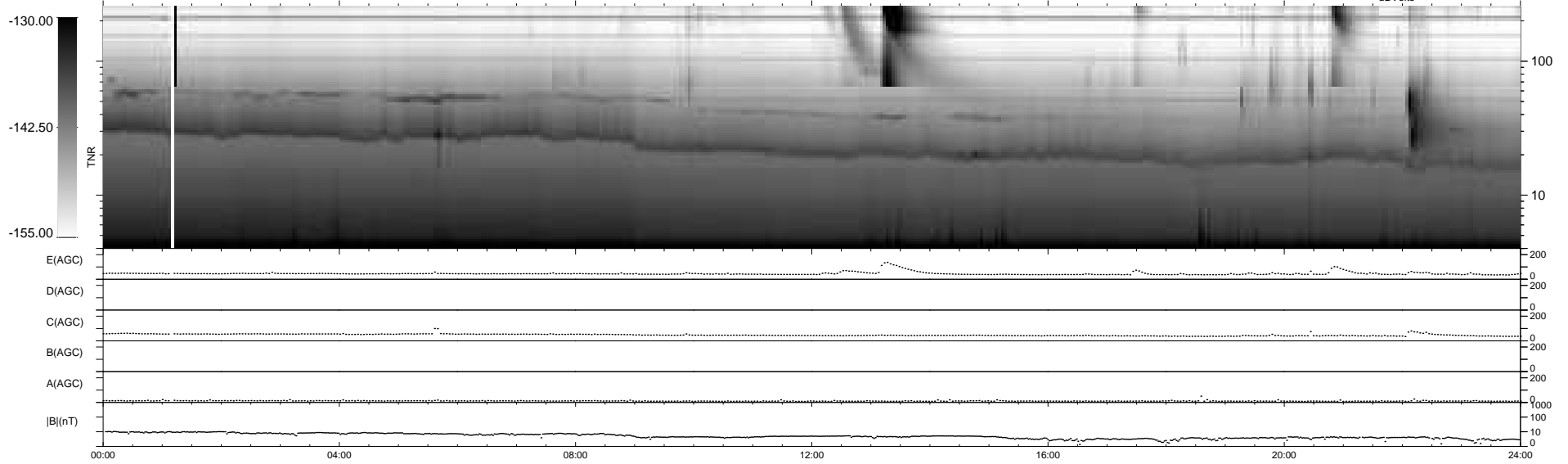
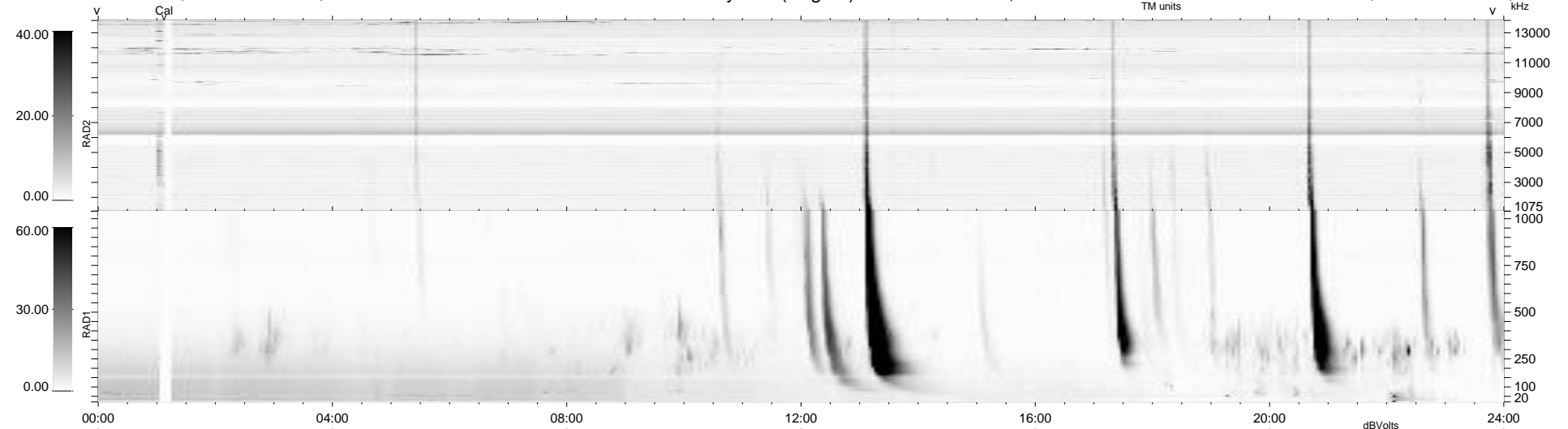
68 bad + 872 good MF/940MF projected (92%) - 0 missing MFs  
 Avg interval = 180 secs  
 Re = 214.30 (201.10, -74.04, -0.73 GSE)

windlib 2.0b

LZ version = v01

### WIND/WAVES Summary Plot (Page 1) for 16-NOV-2017, DOY = 320

DAILY 2017-11-17 17:52:07  
 Re = 212.94 (200.63, -71.34, -1.14 GSE)



RAD2  
 Antenna Ey .....  
 Mode LIN(1) .....  
 SUM/SEP SEP .....  
 Toggle OFF .....  
 RAD1  
 Antenna Ex .....  
 Mode LIS(2,4) .....  
 SUM/SEP SUM .....  
 Toggle OFF .....  
 TNR  
 Antenna ExEy .....  
 Mode A-32 .....  
 Sweep ACE .....