

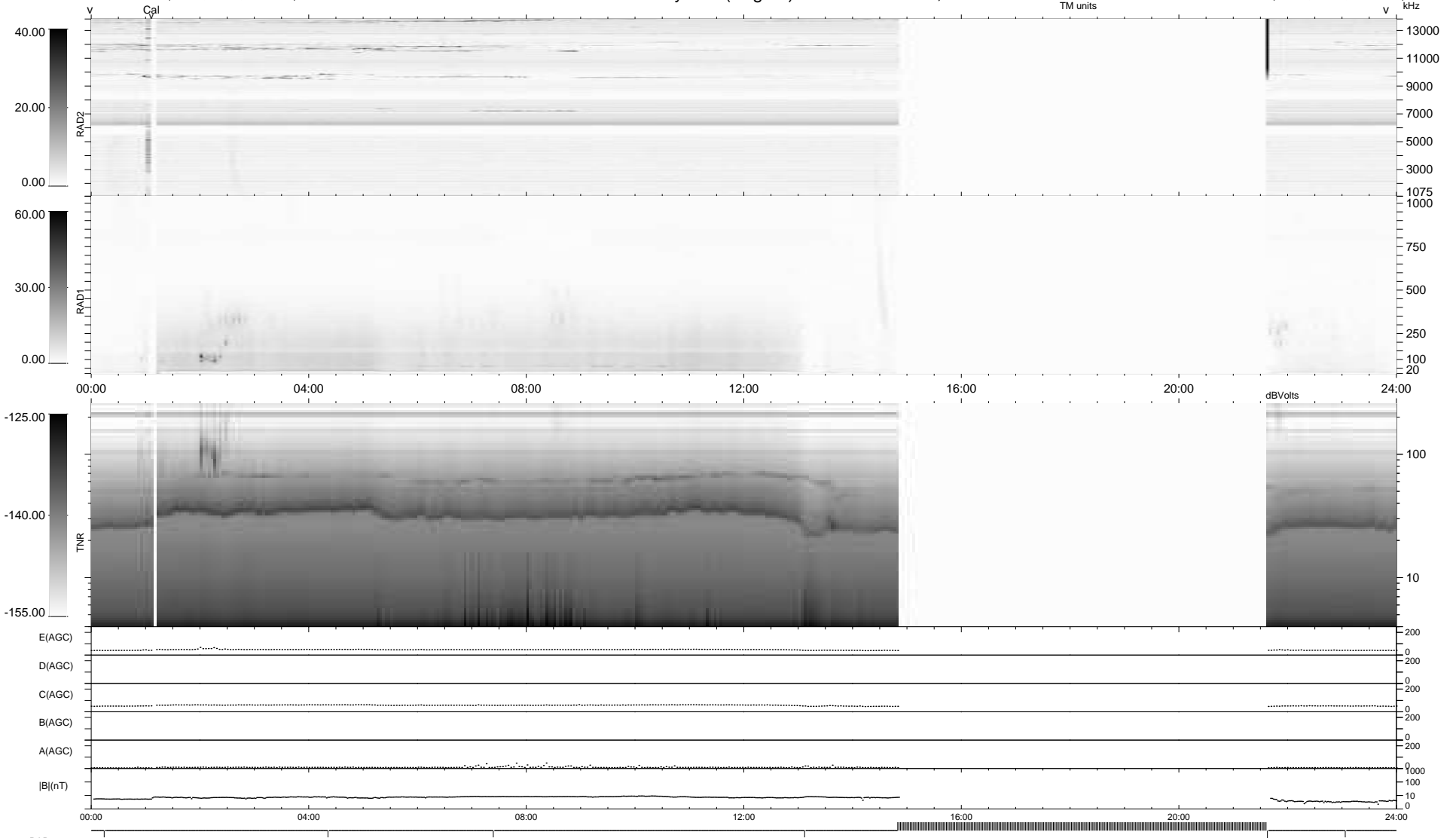
6 bad + 667 good MF/939MF projected (71%) - 266 missing MFs
 Avg interval = 180 secs
 Re = -217.02 (202.09, -79.10, 0.10 GSE)

windlib 2.0b

LZ version = v01

WIND/WAVES Summary Plot (Page 1) for 14-NOV-2017, DOY = 318

DAILY 2017-11-15 16:52:06
 Re = 215.67 (201.59, -76.65, -0.31 GSE)



```

RAD2
Antenna  Ey .....
Mode     LIN(1) .....
SUM/SEP  SEP .....
Toggle   OFF .....

RAD1
Antenna  Ex .....
Mode     LIS(2,4) .....
SUM/SEP  SUM .....
Toggle   OFF .....

TNR
Antenna  ExEy .....
Mode     A-32 .....
Sweep    ACE .....
  
```