

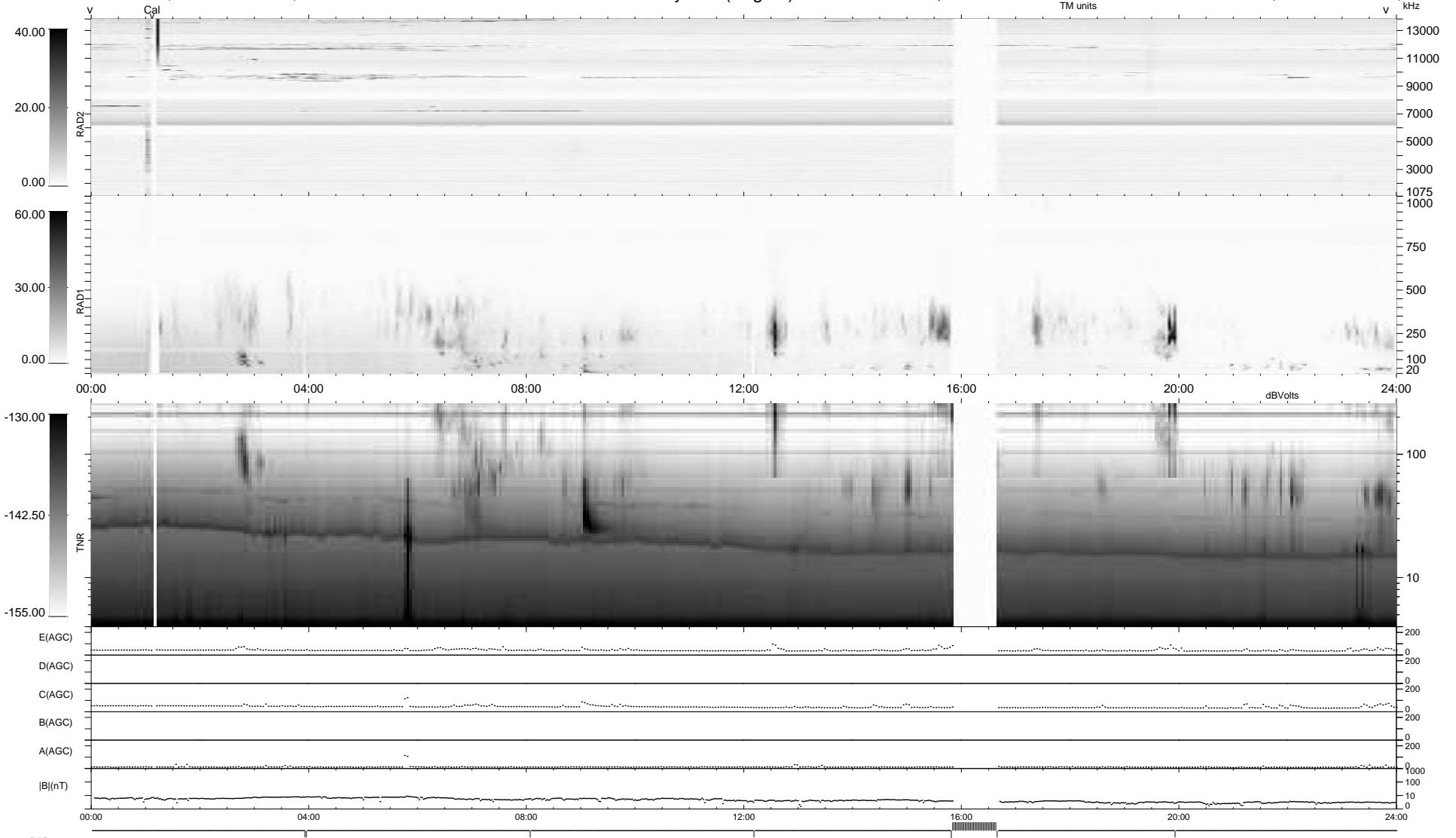
7 bad + 900 good MF/939MF projected (95%) - 32 missing MFs  
 Avg interval = 180 secs  
 Re = 222.27 (204.30, -87.54, 1.71 GSE)

windlib 2.0b

LZ version = v01

### WIND/WAVES Summary Plot (Page 1) for 10-NOV-2017, DOY = 314

DAILY 2017-11-11 18:52:07  
 Re = 220.99 (203.70, -85.67, 1.31 GSE)



RAD2  
 Antenna Ey .....  
 Mode LIN(1) .....  
 SUM/SEP SEP .....  
 Toggle OFF .....  
 RAD1  
 Antenna Ex .....  
 Mode LIS(2,4) .....  
 SUM/SEP SUM .....  
 Toggle OFF .....  
 TNR  
 Antenna ExEy .....  
 Mode A-32 .....  
 Sweep ACE .....