

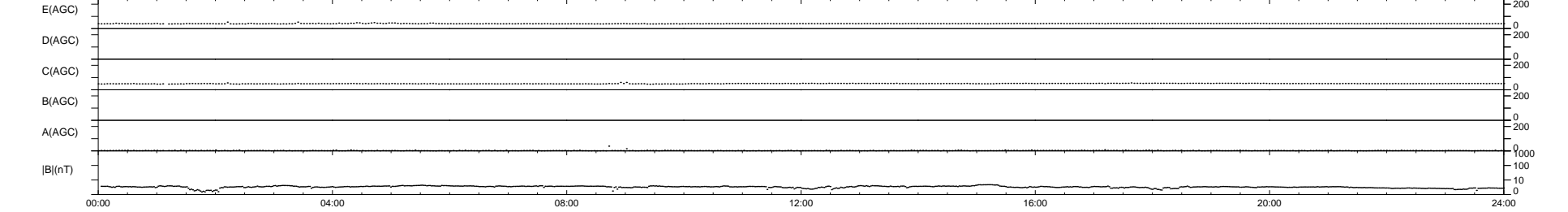
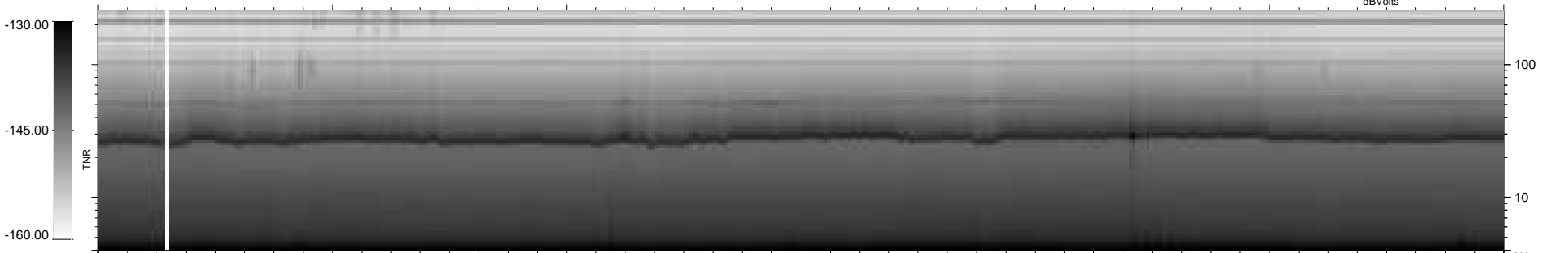
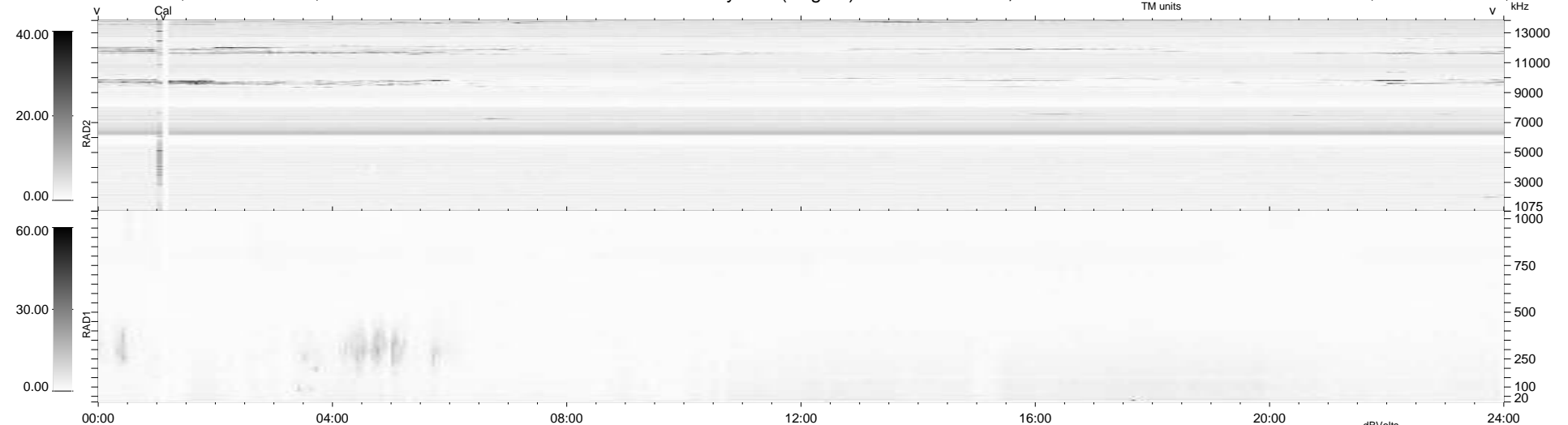
88 bad + 851 good MF/939MF projected (90%) - 0 missing MFs
 Avg interval = 180 secs
 Re = 237.92 (215.99, -99.56, 6.41 GSE)

windlib 2.0b

LZ version = v01

WIND/WAVES Summary Plot (Page 1) for 29-OCT-2017, DOY = 302

DAILY 2017-10-30 09:52:11
 Re = 236.59 (214.71, -99.18, 6.04 GSE)



```

RAD2
Antenna Ey
Mode LIN(1)
SUM/SEP SEP
Toggle OFF

RAD1
Antenna Ex
Mode LIS(2,4)
SUM/SEP SUM
Toggle OFF

TNR
Antenna ExEy
Mode A-32
Sweep ACE
  
```