

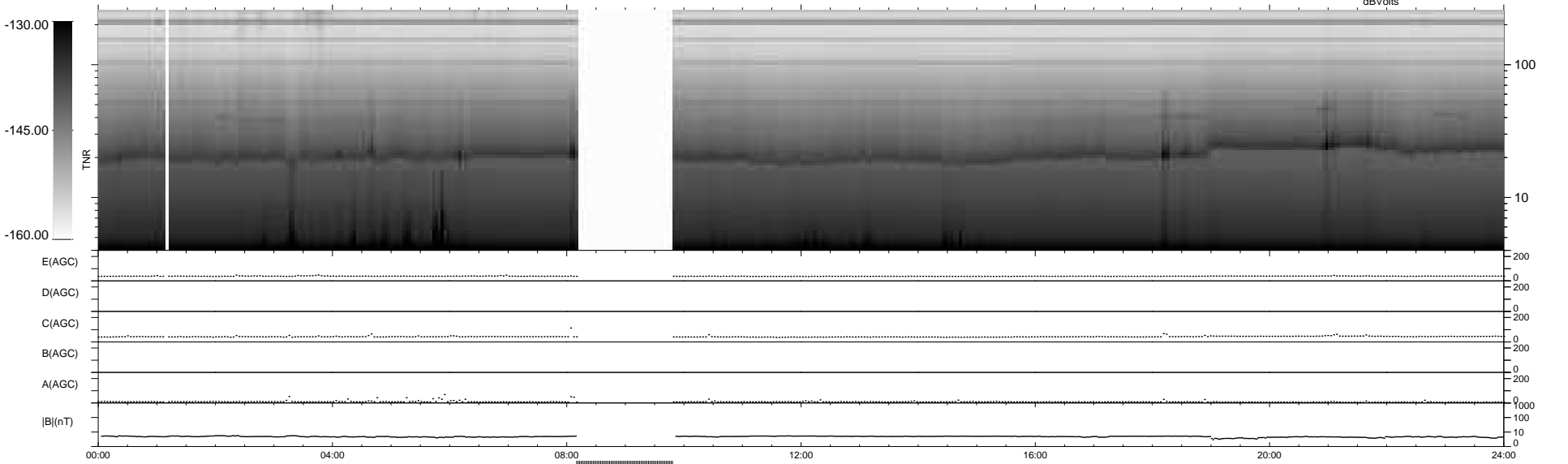
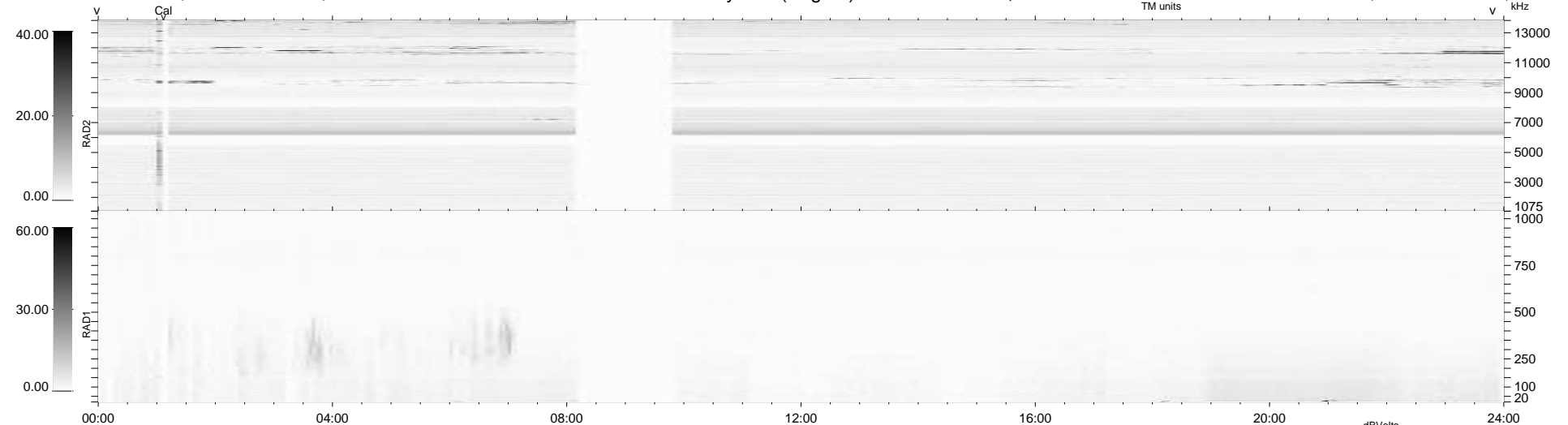
84 bad + 790 good MF/939MF projected (84%) - 65 missing MFs
 Avg interval = 180 secs
 Re = 240.56 (218.65, -100.04, 7.13 GSE)

windlib 2.0b

LZ version = v01

WIND/WAVES Summary Plot (Page 1) for 27-OCT-2017, DOY = 300

DAILY 2017-10-28 21:52:08
 Re = 239.26 (217.32, -99.85, 6.77 GSE)



```

RAD2
Antenna Ey .....
Mode LIN(1) .....
SUM/SEP SEP .....
Toggle OFF .....

RAD1
Antenna Ex .....
Mode LIS(2,4) .....
SUM/SEP SUM .....
Toggle OFF .....

TNR
Antenna ExEy .....
Mode A-32 .....
Sweep ACE .....
  
```