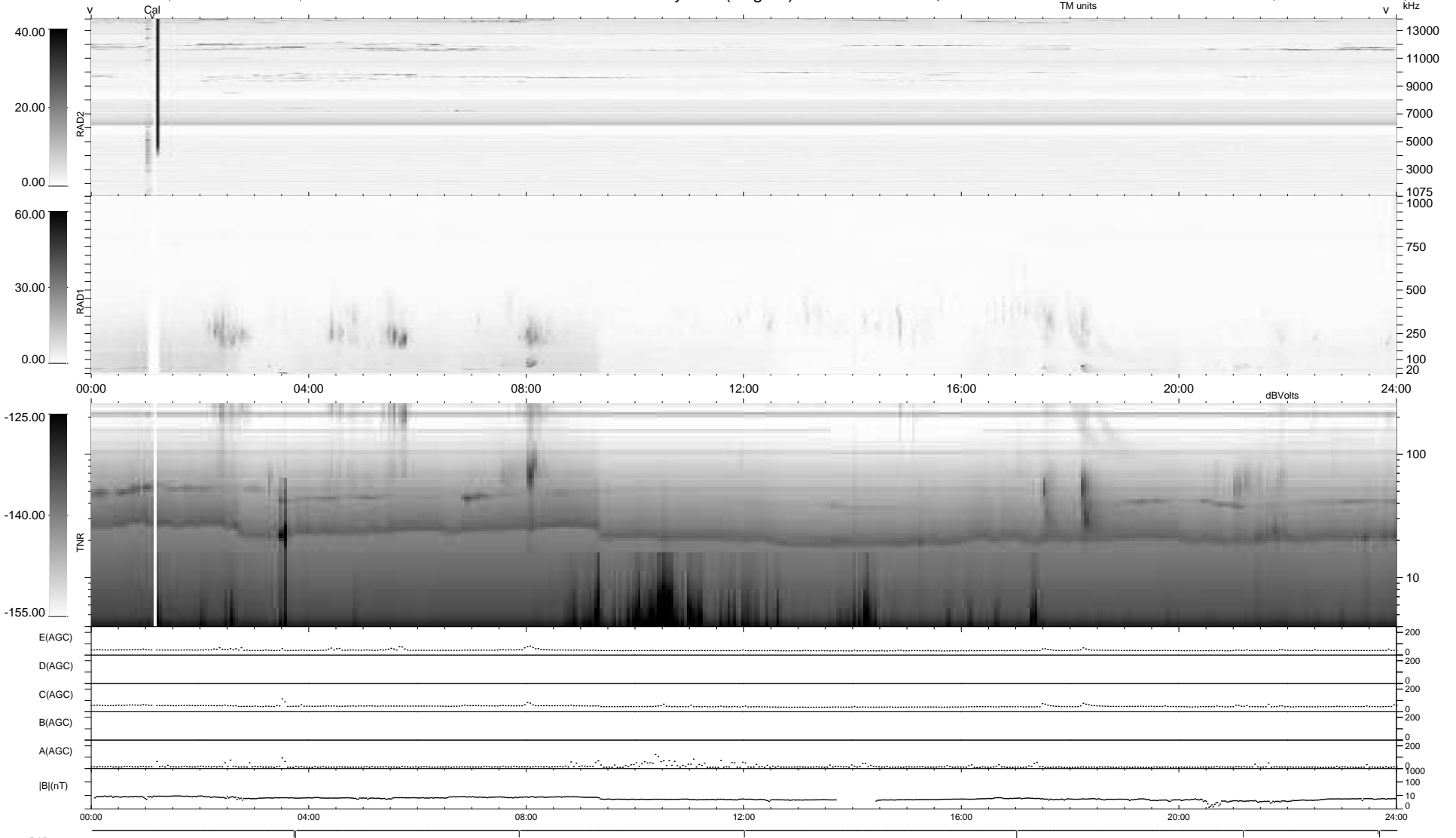


8 bad + 931 good MF/939MF projected (99%) - 0 missing MFs
 Avg interval = 180 secs
 Re = -243.10 (221.38, -100.14, 7.81 GSE)

windlib 2.0b LZ version = v02
 DAILY 2017-11-01 11:52:08
 Re = 241.85 (220.02, -100.13, 7.47 GSE)

WIND/WAVES Summary Plot (Page 1) for 25-OCT-2017, DOY = 298



RAD2
 Antenna Ey
 Mode LIN(1)
 SUM/SEP SEP
 Toggle OFF
 RAD1
 Antenna Ex
 Mode LIS(2,4)
 SUM/SEP SUM
 Toggle OFF
 TNR
 Antenna ExEy
 Mode A-32
 Sweep ACE