

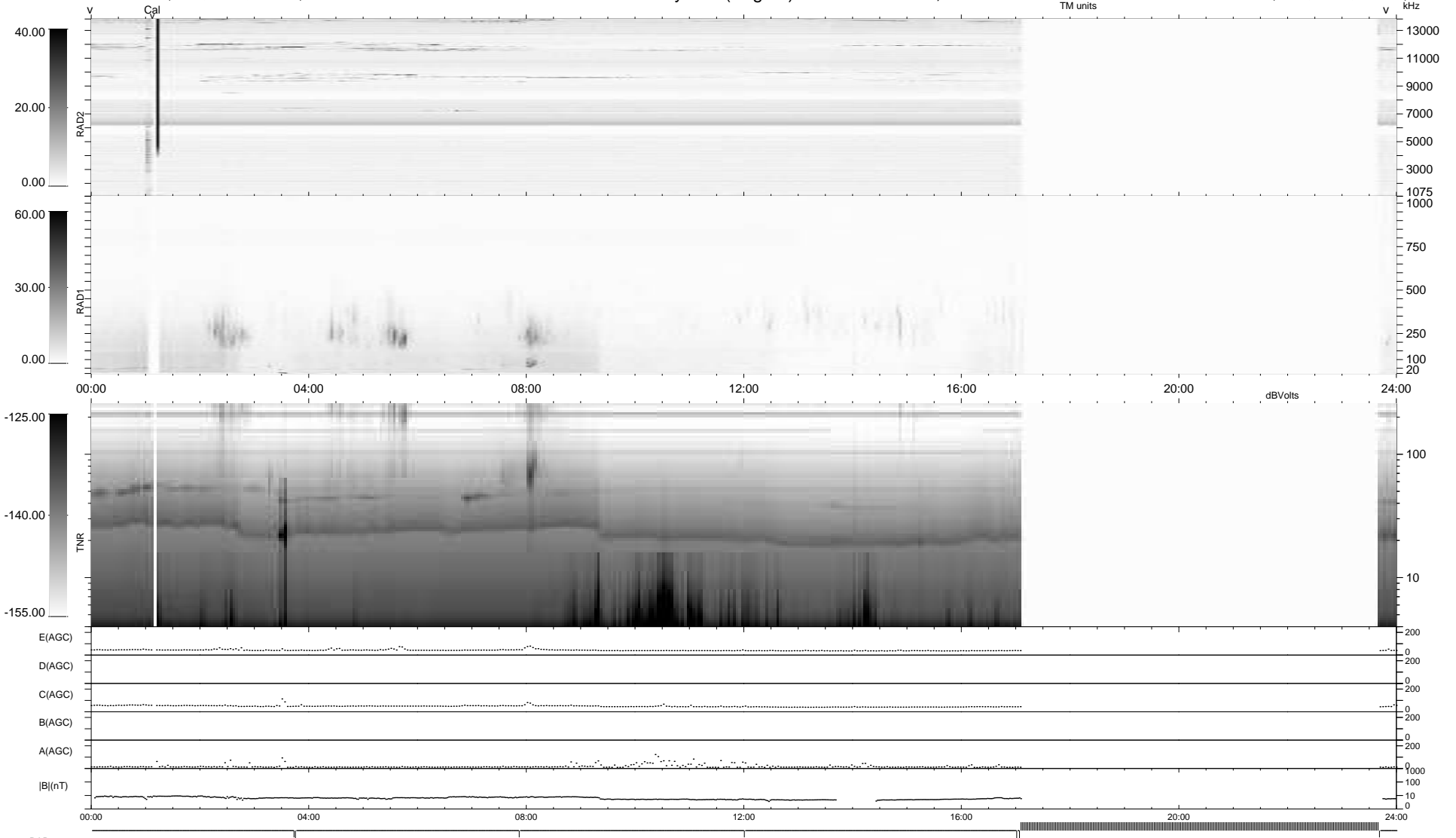
7 bad + 674 good MF/939MF projected (71%) - 258 missing MFs  
 Avg interval = 180 secs  
 Re = -243.10 (221.38, -100.14, 7.81 GSE)

windlib 2.0b

LZ version = v01

### WIND/WAVES Summary Plot (Page 1) for 25-OCT-2017, DOY = 298

DAILY 2017-10-27 00:52:07  
 Re = 241.85 (220.02, -100.13, 7.47 GSE)



```

RAD2
Antenna Ey .....
Mode LIN(1) .....
SUM/SEP SEP .....
Toggle OFF .....

RAD1
Antenna Ex .....
Mode LIS(2,4) .....
SUM/SEP SUM .....
Toggle OFF .....

TNR
Antenna ExEy .....
Mode A-32 .....
Sweep ACE .....
  
```