

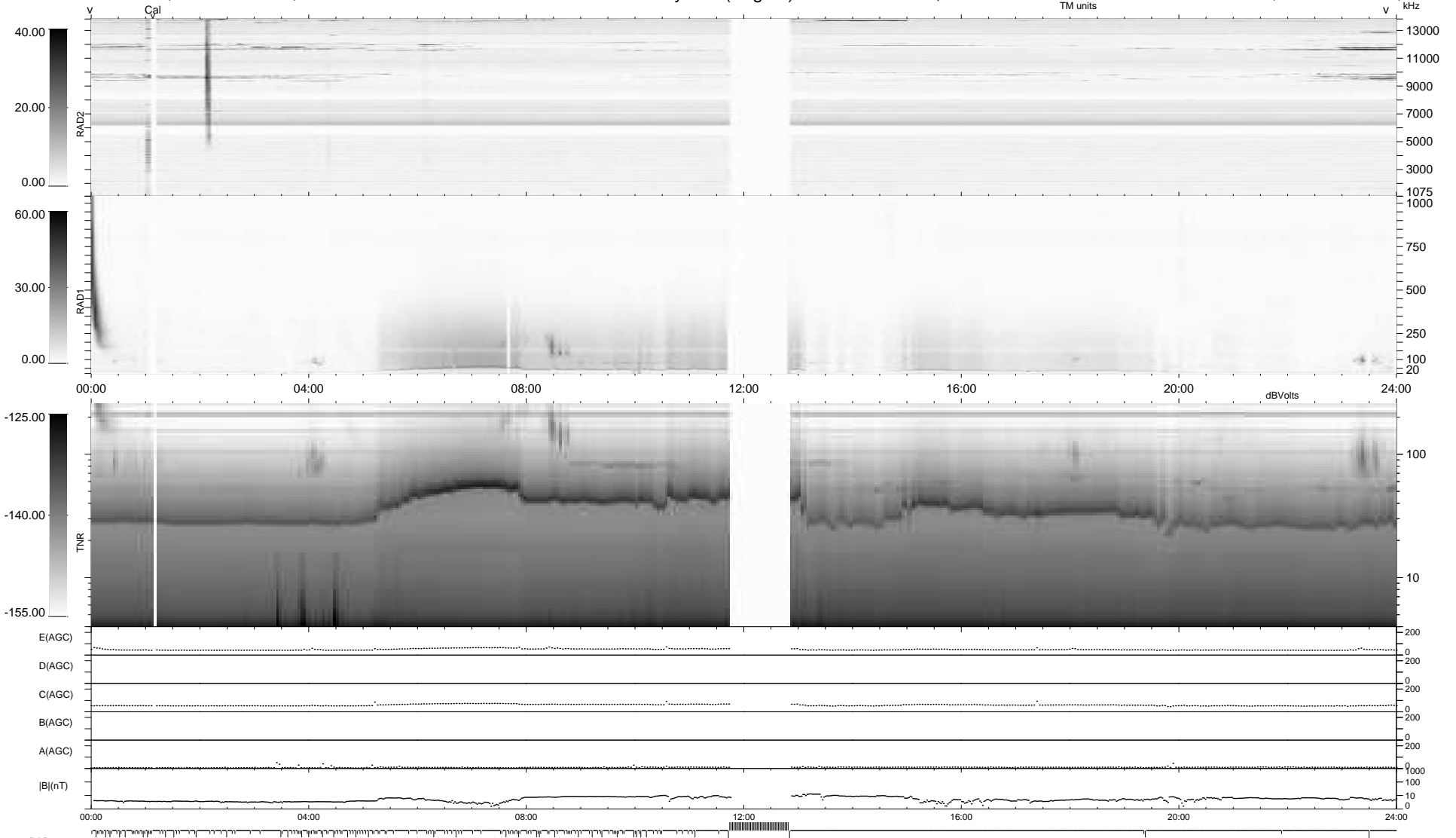
163 bad + 733 good MF/939MF projected (78%) - 43 missing MFs
 Avg interval = 180 secs
 Re = 247.70 (226.82, -99.13, 9.03 GSE)

windlib 2.0b

LZ version = v01

WIND/WAVES Summary Plot (Page 1) for 21-OCT-2017, DOY = 294

DAILY 2017-10-22 02:52:08
 Re = 246.63 (225.49, -99.53, 8.75 GSE)



RAD2
 Antenna Ey
 Mode LIN(1)
 SUM/SEP SEP
 Toggle OFF

RAD1
 Antenna Ex
 Mode LIS(2,4)
 SUM/SEP SUM
 Toggle OFF

TNR
 Antenna ExEy
 Mode A-32
 Sweep ACE